

# Service Manual

Stereo Cassette Player

Mini Cassette  
**RQ-P165**

Color

(K) . . . . Black Type  
(S) . . . . Silver Type



Area

Country Code	Areas	Color
[E]	Continental Europe/ Great Britain/ F.R. Germany/Italy	(K)

## ■ SPECIFICATIONS

### General:

Power Requirement:	Battery; 3V (two UM-3 R6/LR6 batteries) AC; 220V, 50Hz (For UK: 240V, 50Hz) with optional AC adaptor RP-AC33
Power Output:	40mW (20mW × 2) . . . RMS (max.)
Input:	DC IN; 3V (⊖ ⊕)
Output:	Headphones; 20 Ω φ3.5
Frequency Response:	50 ~ 14000Hz (Nor/CrO <sub>2</sub> /Metal)
Motor:	Electrical governor motor
Track System:	4-track 2-channel stereo playback
Tape Speed:	4.8cm/s
Dimensions:	86.8(W) × 115(H) × 32.3(D)mm
Weight:	230g without batteries

### Notes:

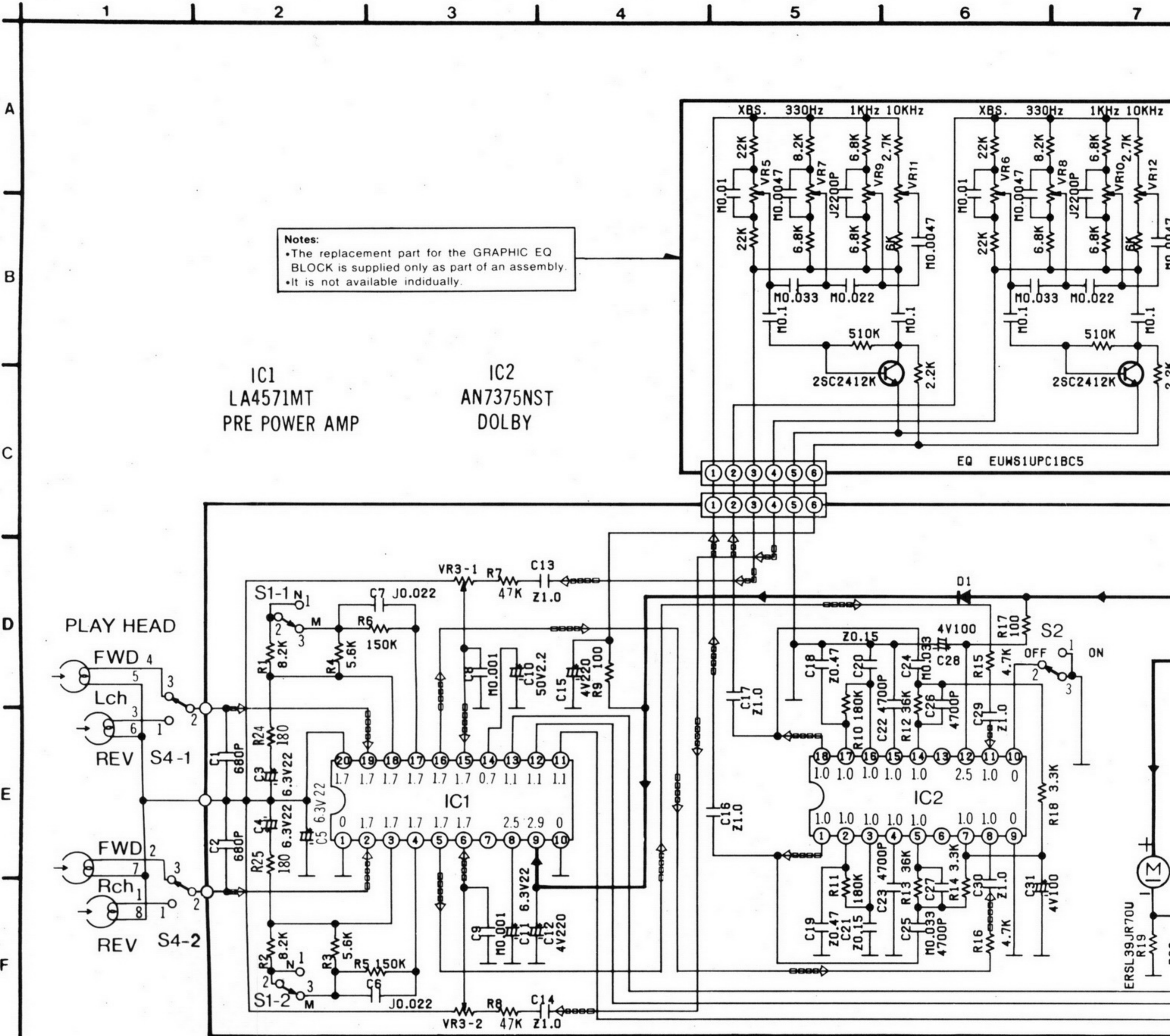
1. Weights and dimensions shown are approximate.
2. Design and specifications are subject to change without notice.

**Panasonic**

**Matsushita Electric Industrial Co., Ltd.**

Central P.O. Box 288, Osaka 530-91, Japan

**SCHEMATIC DIAGRAM**



**Notes:**  
 •The replacement part for the GRAPHIC EQ BLOCK is supplied only as part of an assembly.  
 •It is not available individually.

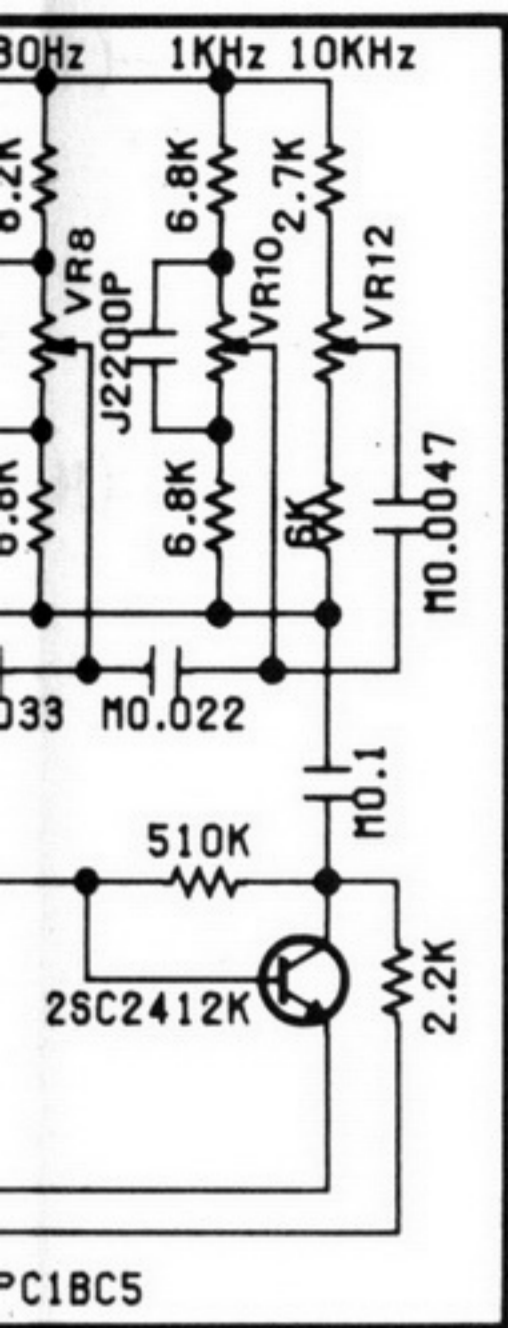
IC1  
LA4571MT  
PRE POWER AMP

IC2  
AN7375NST  
DOLBY

- Notes:**
- S1-1, 1-2: Tape Selector Switch in "CrO<sub>2</sub>/METAL" Position. (1...Normal, 3...CrO<sub>2</sub>/Metal)
  - S2: Dolby NR Switch in "OFF" Position. (1...ON, 2...OFF)
  - S3: Motor Switch in "OFF" Position.
  - S4-1, 4-2: FWD/REV Selector Switch in "FWD" Position. (1...FWD, 3...REV)
  - VR3-1: Volume Control VR. (Lch)  
VR3-2: Volume Control VR. (Rch)
  - VR4: Tape Speed adjustment VR.
  - VR5~12: Graphic Equalizer VR

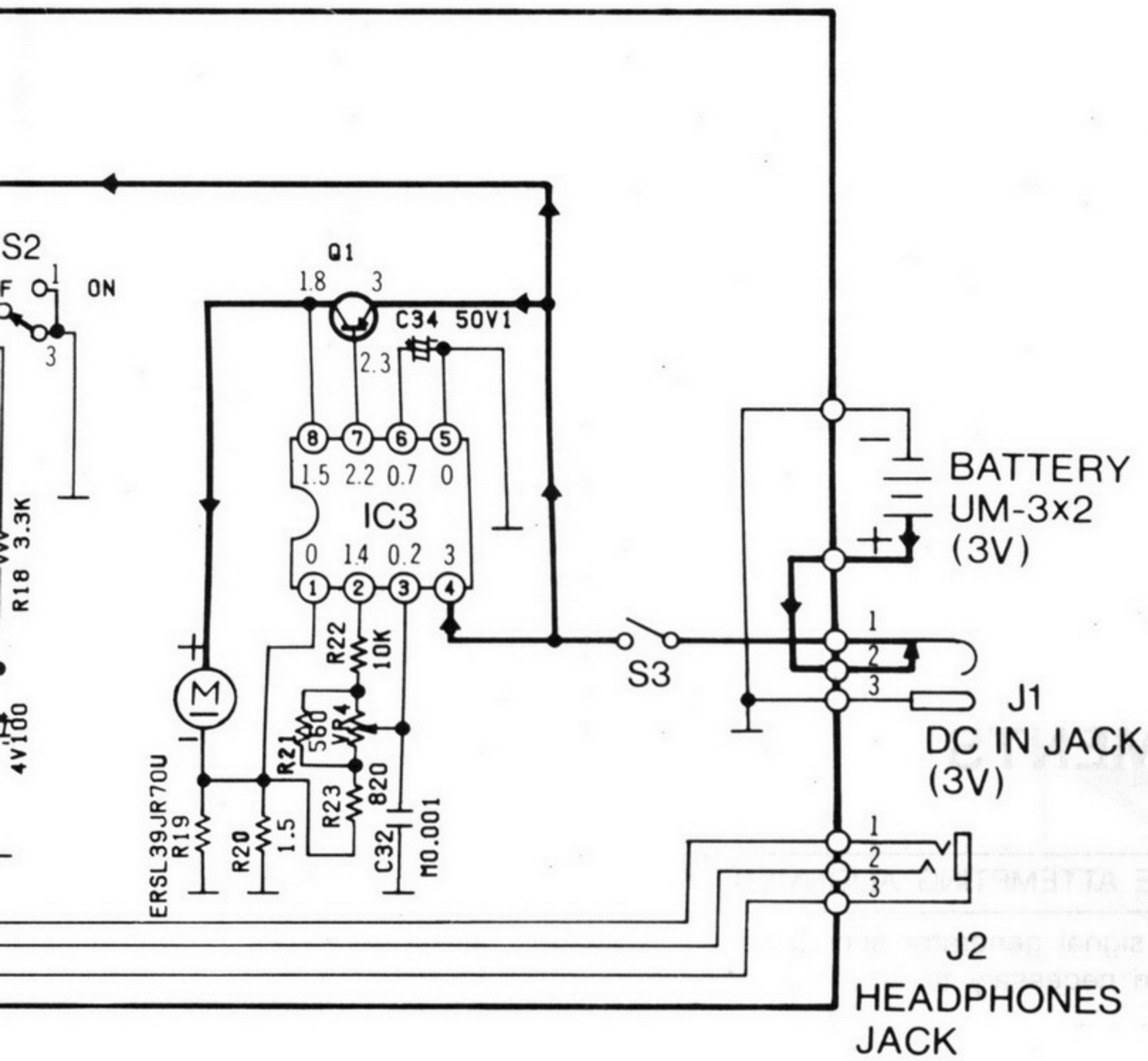
- ( VR5, 6: XBS  
 VR7, 8: 330Hz  
 VR9, 10: 1kHz  
 VR11, 12: 10kHz )

- All voltage value shown in circuitry are condition and playback mode with volume maximum position.
- +B Voltage Line.
- Playback Signal.
- Battery current: Volume minimum output  
Volume Maximum output  
[315Hz 0dB tape QZZCF

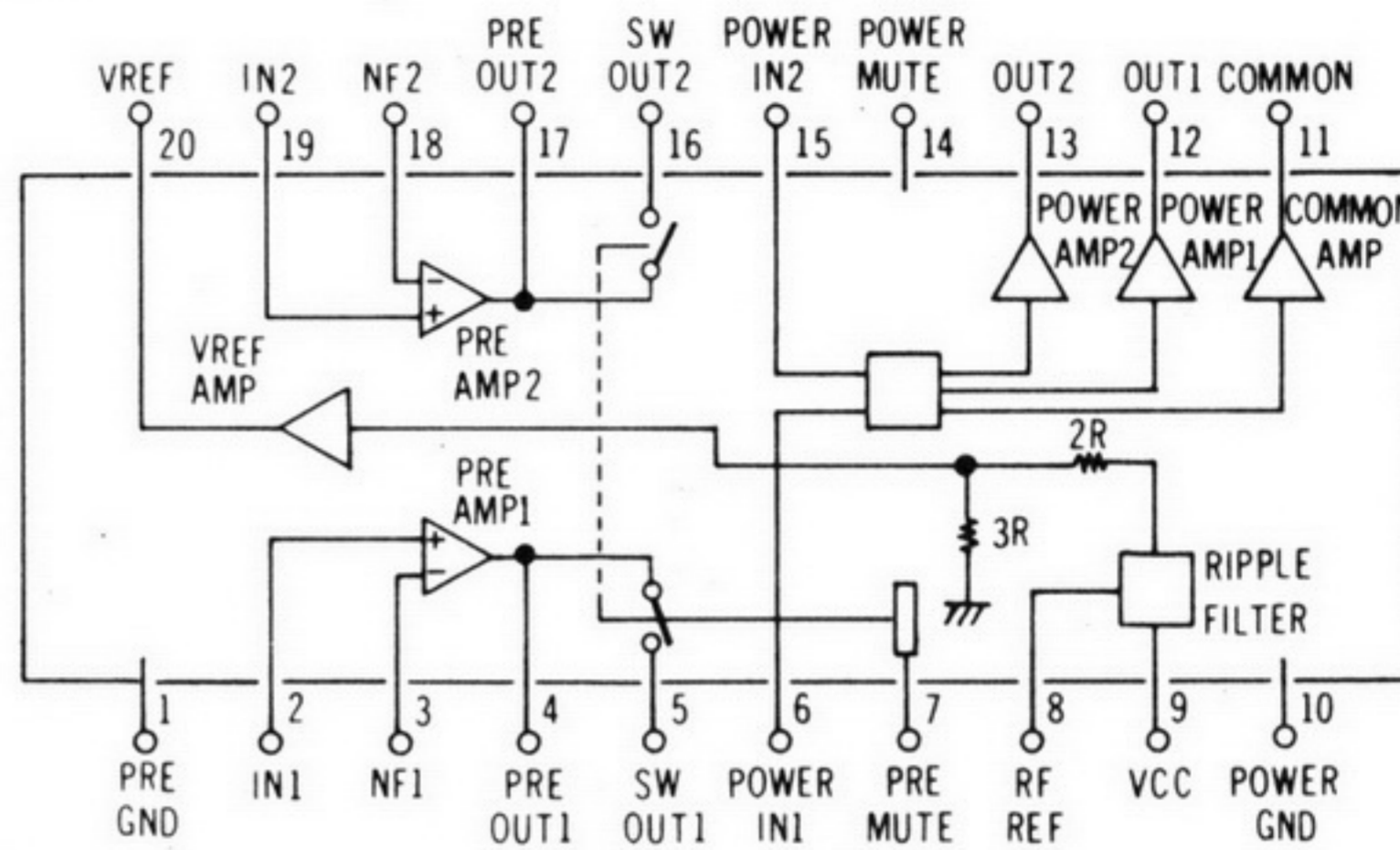


IC3  
AN6612ST  
MOTOR DRIVE

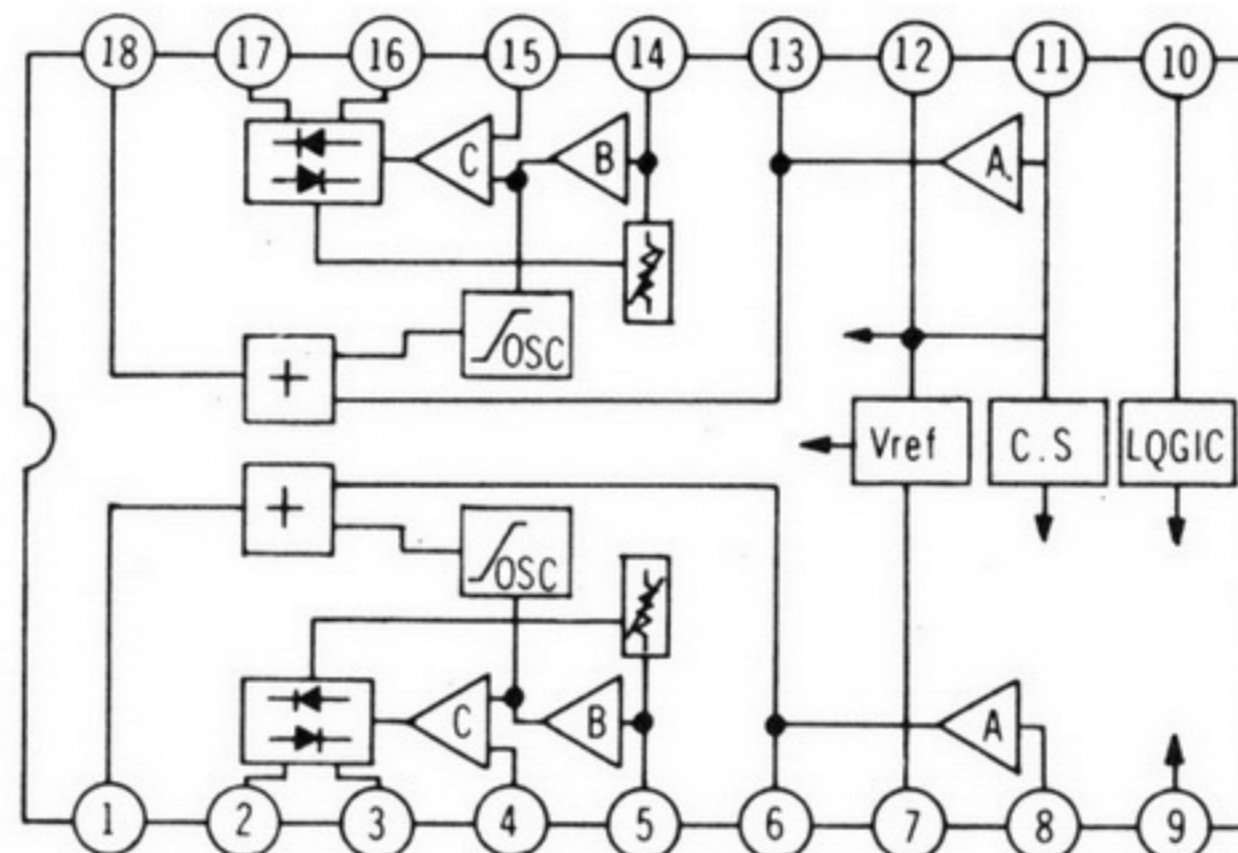
Q1  
2SC2412K  
MOTOR DRIVE



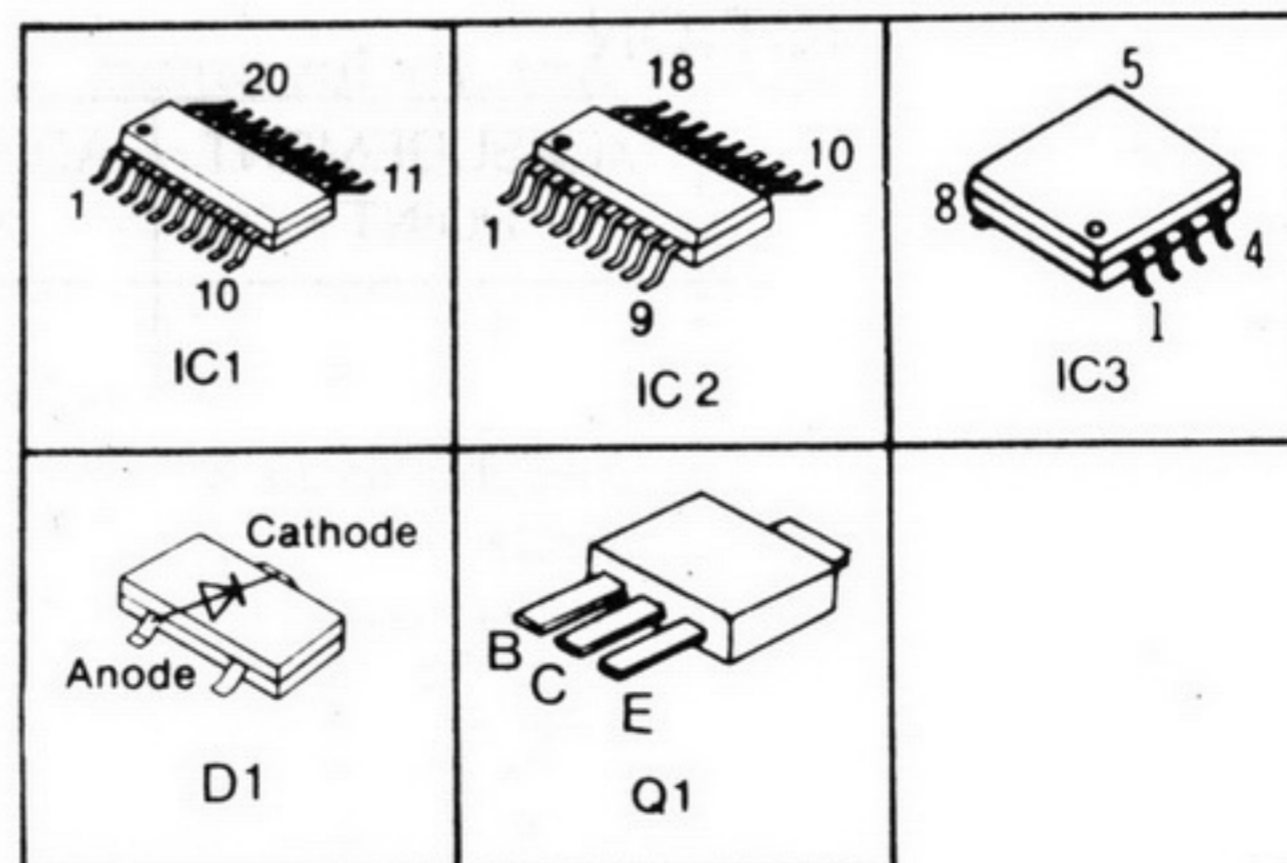
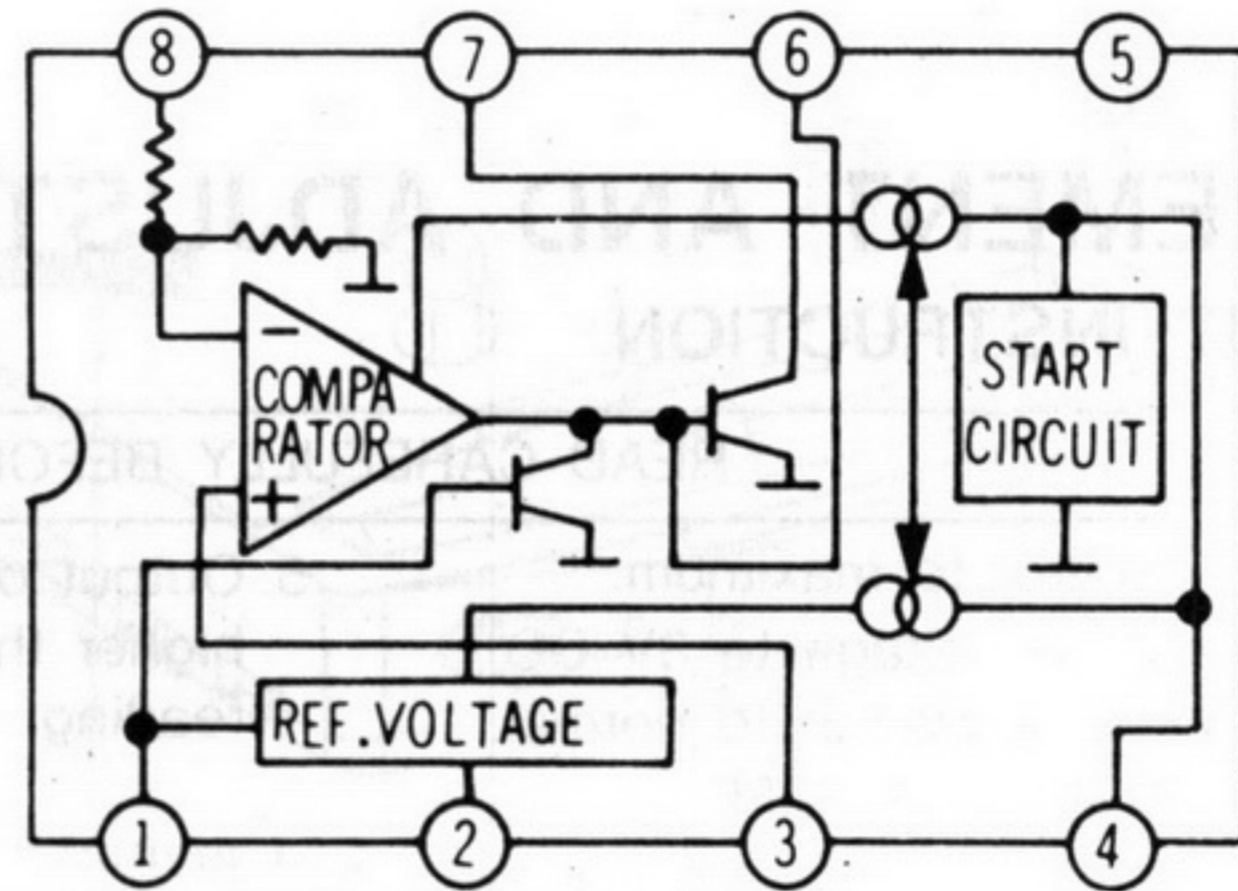
### IC1 LA4571MT



### IC2 AN7375NST



### IC3 AN6612ST



in circuitry are under no signal  
mode with volume control at

minimum output.....140mA  
Maximum output.....160mA  
[dB tape QZZCFM playback]