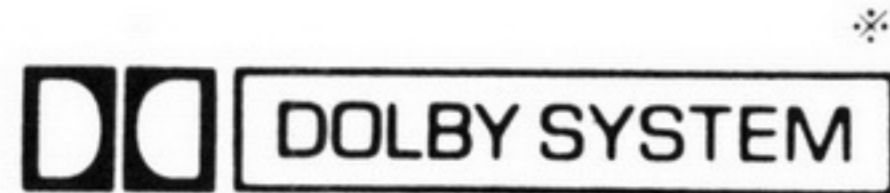


Service Manual

Mini Cassette

RQ-P166

Stereo Cassette Player



Color

(K) Black Type
(H) Gray Type

Area

Country Code	Areas	Color
[E]	Continental Europe/ Great Britain/ F.R. Germany/Italy	(K) (H)



■ SPECIFICATIONS

General:

Power Requirement: Battery; 3V (two UM-3 R6/LR6 batteries)
AC; 220V, 50Hz (For UK: 240V, 50Hz)
with optional AC adaptor RP-AC33

Power Output: 40mW (20mW×2)···RMS (max.)

Input: DC IN; 3V(⊖→⊕)

Output: Headphones; 20Ω φ3.5

Frequency Response: 50~14000Hz (Nor/CrO₂/Metal)

Motor: Electrical governor motor

Track System: 4-track 2-channel stereo playback

Tape Speed: 4.8cm/s

Dimensions: 115(W)×86.8(H)×32.3(D)mm

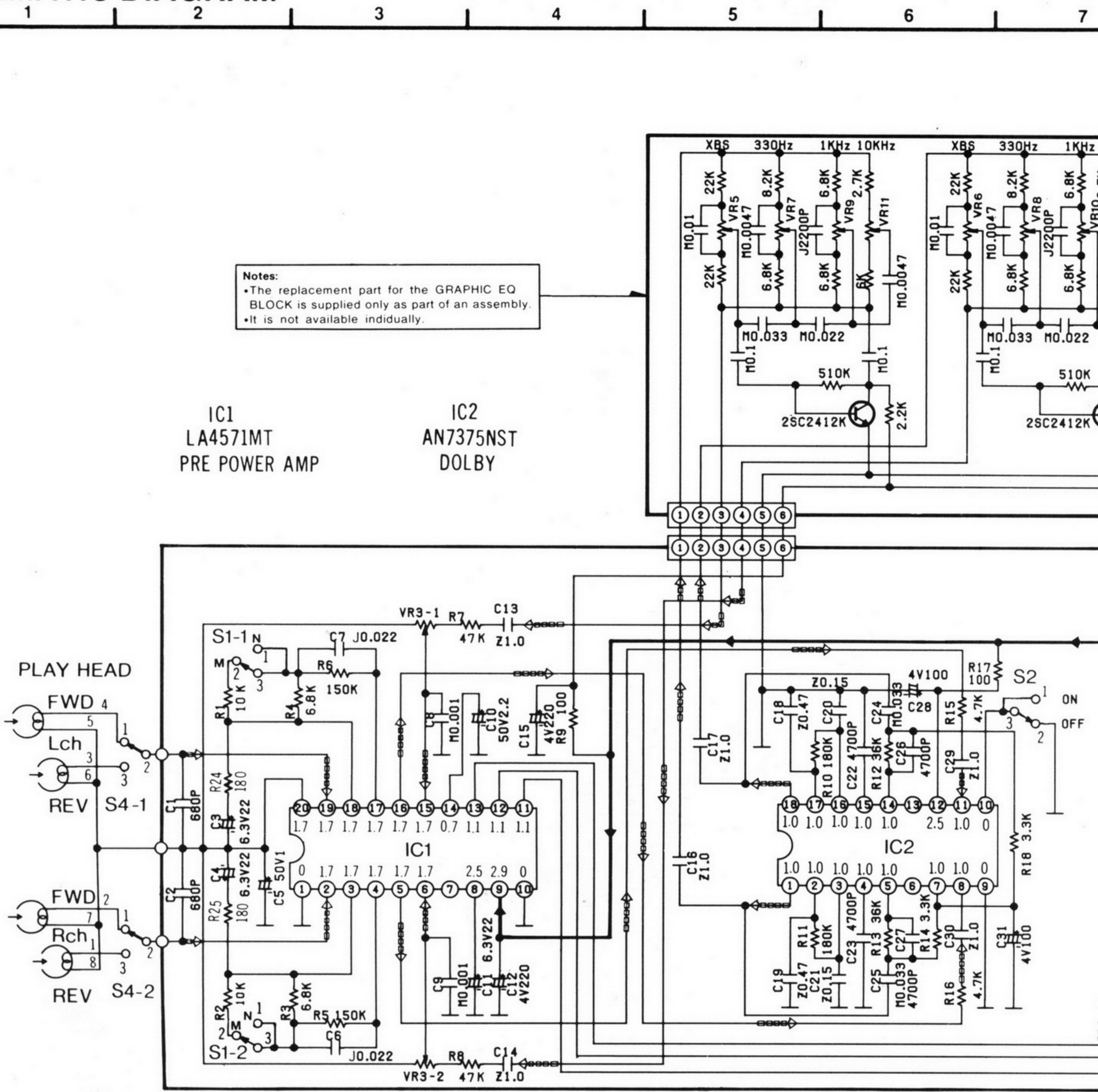
Weight: 230g without batteries

Notes:

1. Weights and dimensions shown are approximate.
2. Design and specifications are subject to change without notice.

Panasonic

SCHEMATIC DIAGRAM



Notes:
 •The replacement part for the GRAPHIC EQ BLOCK is supplied only as part of an assembly.
 •It is not available individually.

IC1
 LA4571MT
 PRE POWER AMP

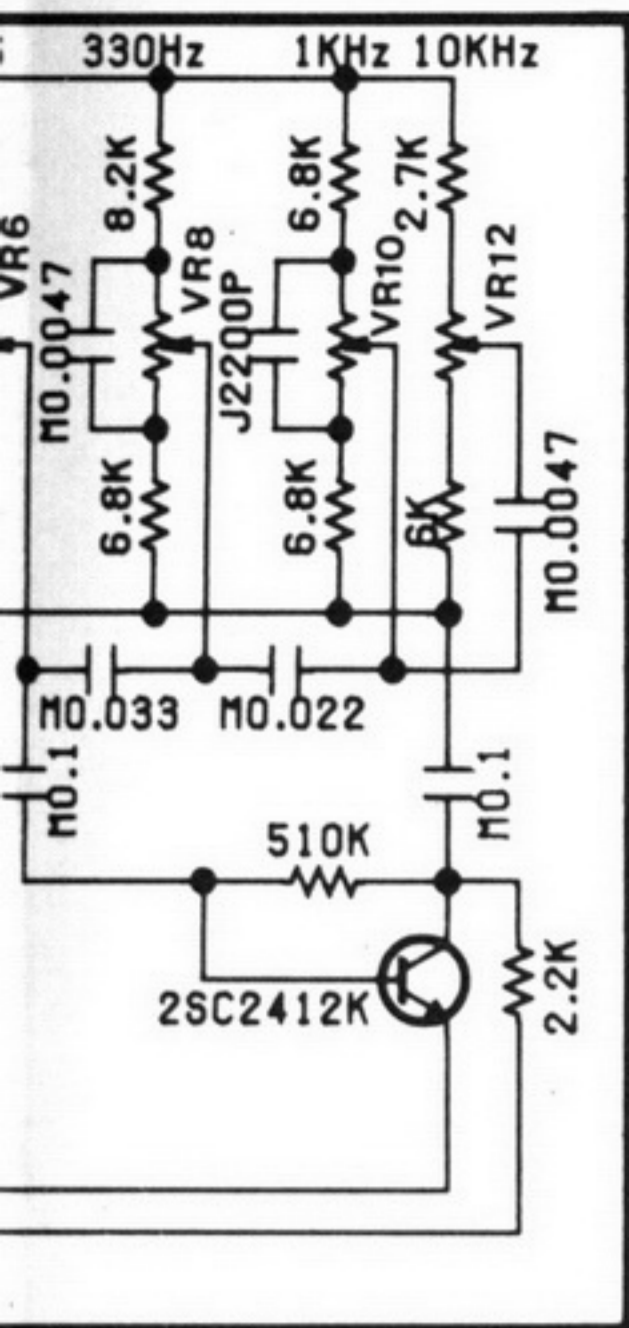
IC2
 AN7375NST
 DOLBY

Notes:

1. S1-1, 1-2: Tape Selector Switch in "CrO₂/METAL" Position.
 (1...Normal, 2...CrO₂/Metal)
2. S2: Dolby NR Switch in "OFF" Position.
 (1...ON, 2...OFF)
3. S3: Motor Switch in "OFF" Position.
4. S4-1, 4-2: FWD/REV Selector Switch in "FWD" Position.
 (1...FWD, 3...REV)
5. VR3-1: Volume Control VR. (Lch)
 VR3-2: Volume Control VR. (Rch)
6. VR4: Tape Speed adjustment VR.
7. VR5~12: Graphic Equalizer VR

- (VR5, 6: XBS
 VR7, 8: 330Hz
 VR9, 10: 1kHz
 VR11, 12: 10kHz)

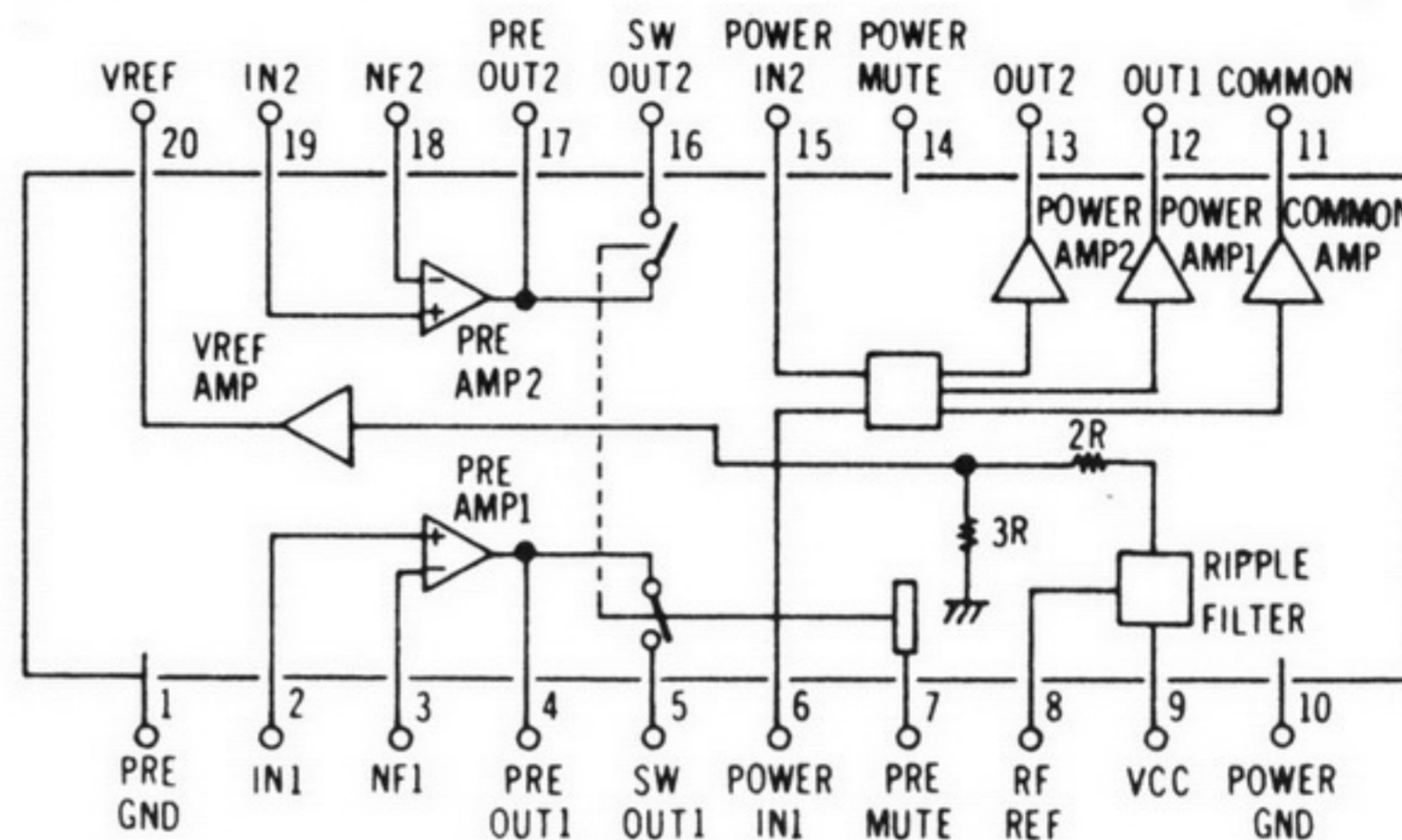
8. All voltage value shown in circuit condition and playback mode with maximum position.
9. +B Voltage Line.
10. Playback Signal.
11. Battery current: Volume minimum condition
 Volume Maximum condition
 [315Hz 0dB tape C]



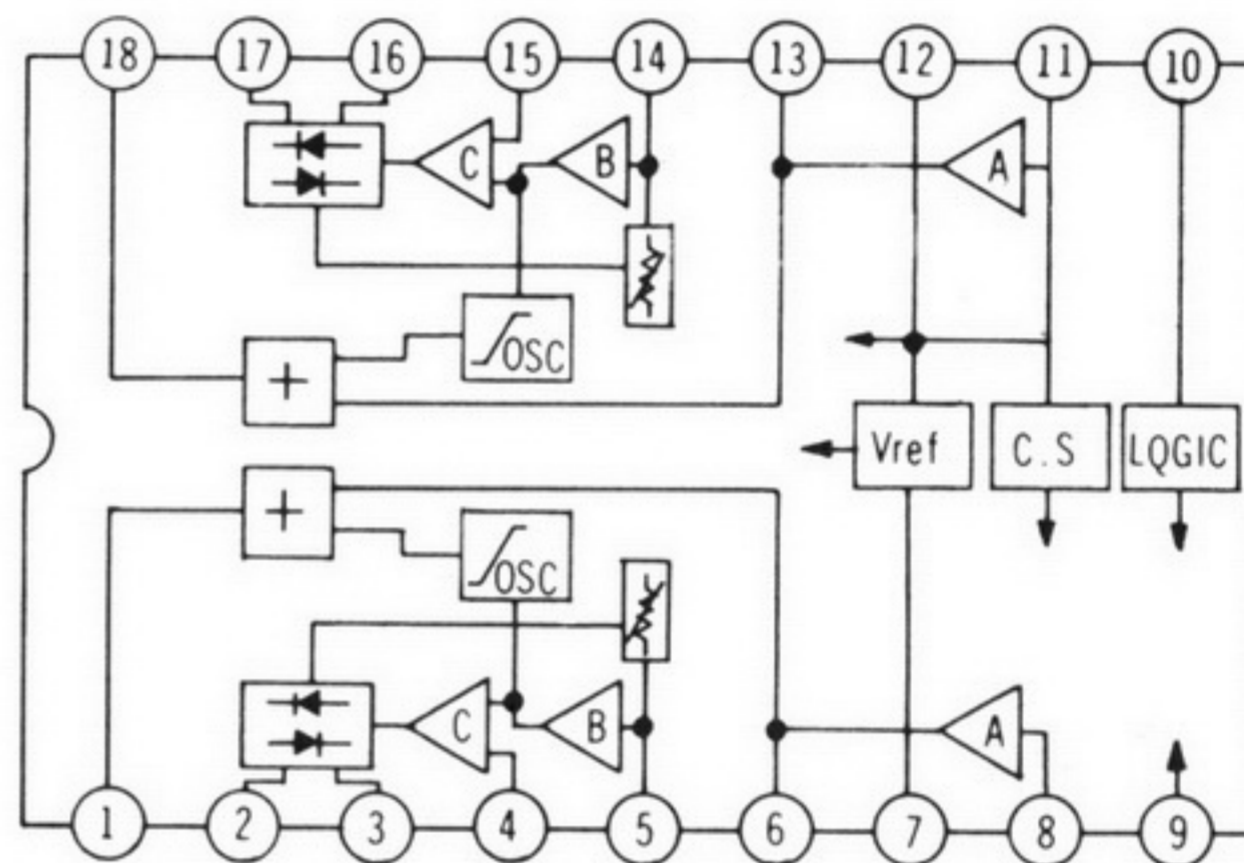
IC3
AN6612ST
MOTOR DRIVER

Q1
2SB1132RTX
MOTOR DRIVE

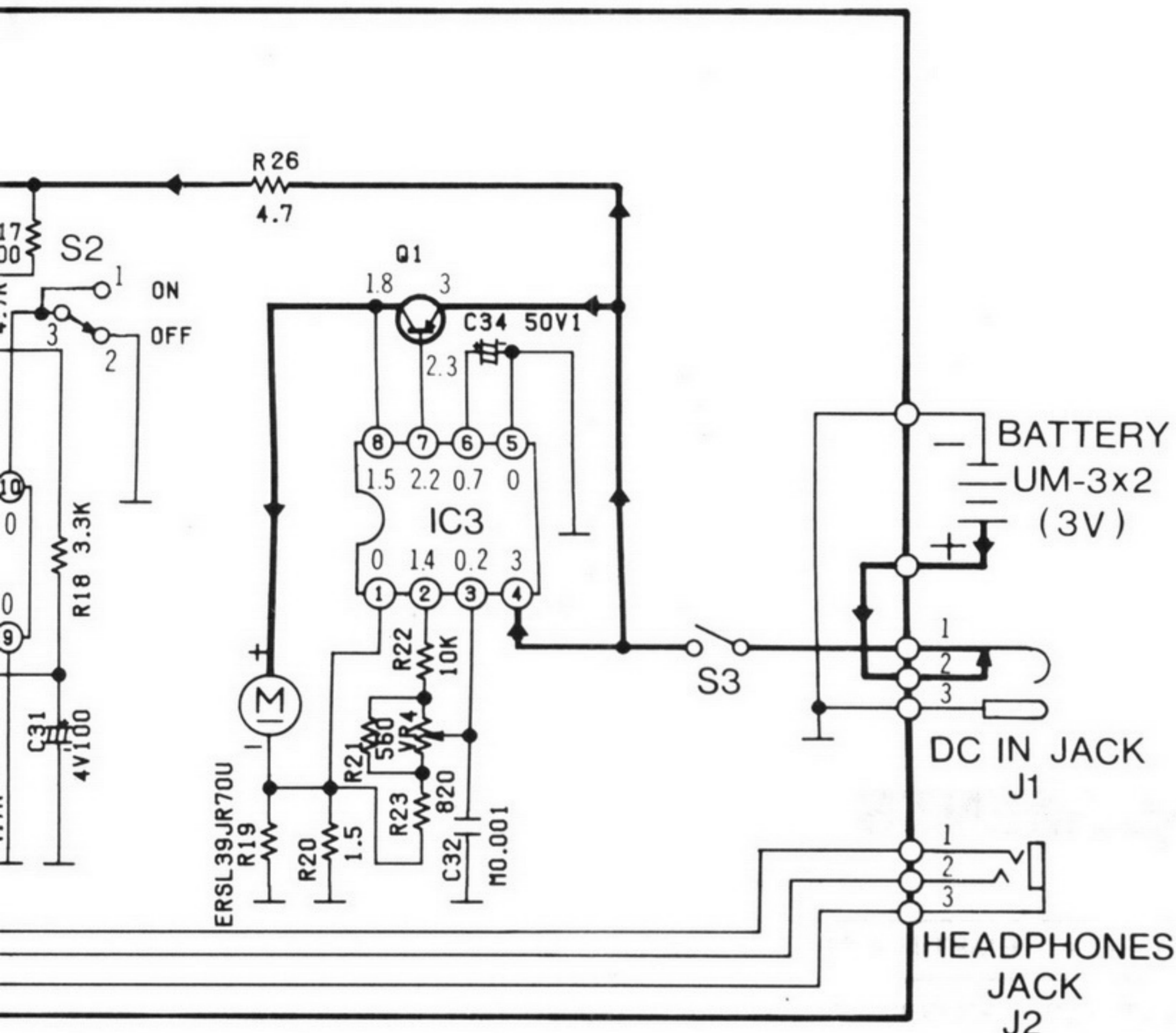
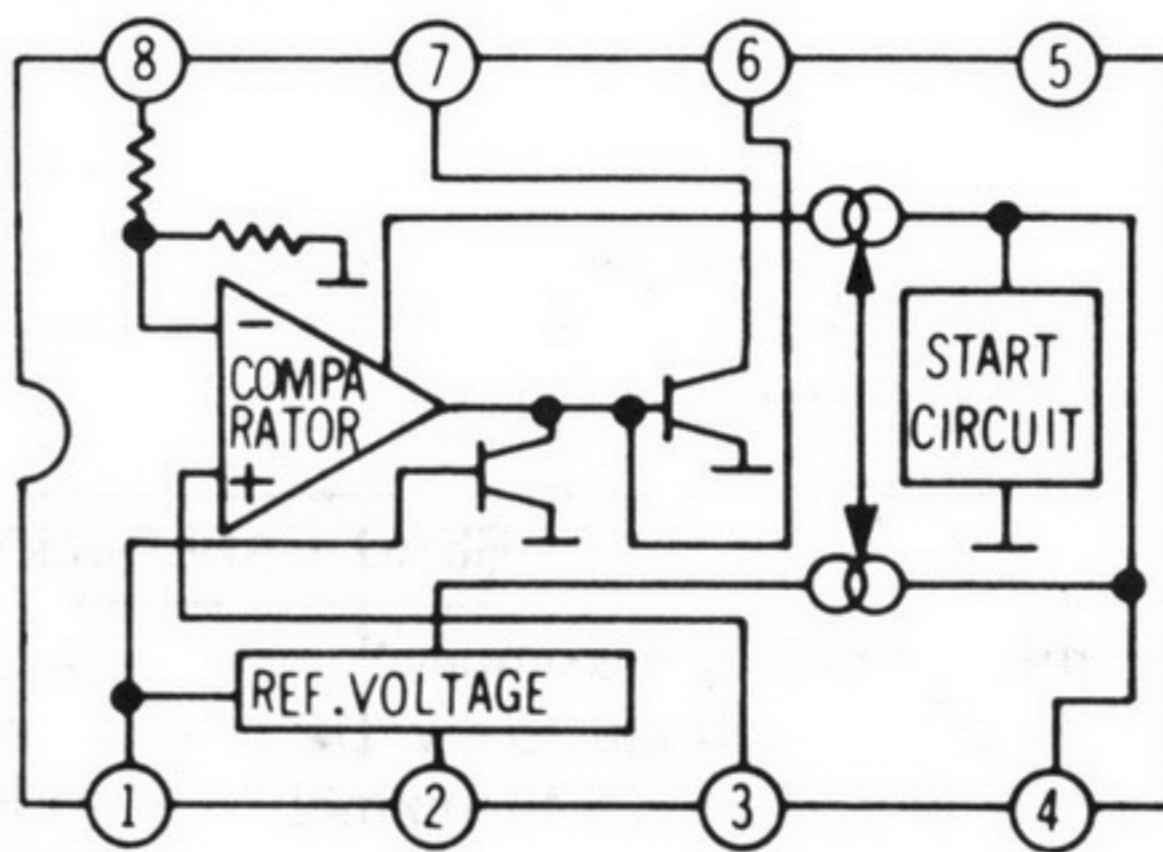
IC1 LA4571MT



IC2 AN7375NST



IC3 AN6612ST



shown in circuitry are under no signal
back mode with volume control at

e Line.
ignal.
ume minimum output.....140mA
ume Maximum output.....160mA
Hz 0dB tape QZZCFM playback]

