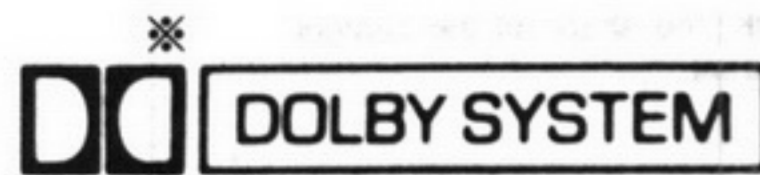


# Service Manual

Stereo Cassette Player

Mini Cassette  
**RQ-S15**



**Color**  
(K)... Black Type

**Area**

Country Code	Area	Color
(E)	Continental Europe.	(K)
(EB)	Great Britain.	

\* Dolby noise reduction manufactured under license from Dolby Laboratories Licensing Corporation. "Dolby" and the double-D symbol are trade marks of Dolby Laboratories Licensing Corporation.

**AR90 MECHANISM SERIES**

**■ SPECIFICATIONS**

**General:**

**Power Requirement:** Battery; 1.5V (one "AA" size battery, not included)  
(Panasonic UM-3/R6P, AM3/LR6 or equivalent, not included)  
Rechargeable Battery; DC 1.2V with an included Panasonic Rechargeable Battery (RP-BP62EY) × 1  
AC; with optional Panasonic AC adaptor RP-AC11

**Power Output:** 5mW+5mW

**Input:** DC IN; 1.5V (mini jack,  $\diamond$   $\ominus$   $\oplus$ )

**Output:** Headphones; 16Ω (φ3.5)

**Dimensions:** (W × H × D) 106.6 × 72.6 × 19.9mm

**Weight:** 125g (with rechargeable battery)

**Charger:** with an included

(E) Input; AC 220V, 50Hz, 4W (RP-BC155EY-0)

(EB) Input; AC 240V, 50Hz, 4W (RP-BC155EBYA)

Output; DC 1.2V, 350mA

**Frequency Response:** 15~20,000Hz (with a normal tape)  
15~20,000Hz (with a CrO<sub>2</sub> type tape)  
15~20,000Hz (with a Metal tape)

**Motor:** Electrical governor motor

**Track System:** 4-track 2-channel stereo playback

**Tape Speed:** 4.8cm/s

Design and specifications are subject to change without notice.

**■ CONTENTS**

	Page
OPERATING INSTRUCTIONS.....	2~4
PROCEDURE FOR THE REPLACEMENT OF THE MECHANISM BLOCK .....	5
PROCEDURES FOR DISASSEMBLY OF THE MAIN PARTS ON THE MECHANISM .....	6
DISASSEMBLY INSTRUCTIONS .....	7~8
MEASUREMENTS AND ADJUSTMENTS .....	9
HOW TO CHECK OPERATIONS DURING DISASSEMBLY AND SERVICING .....	10, 11

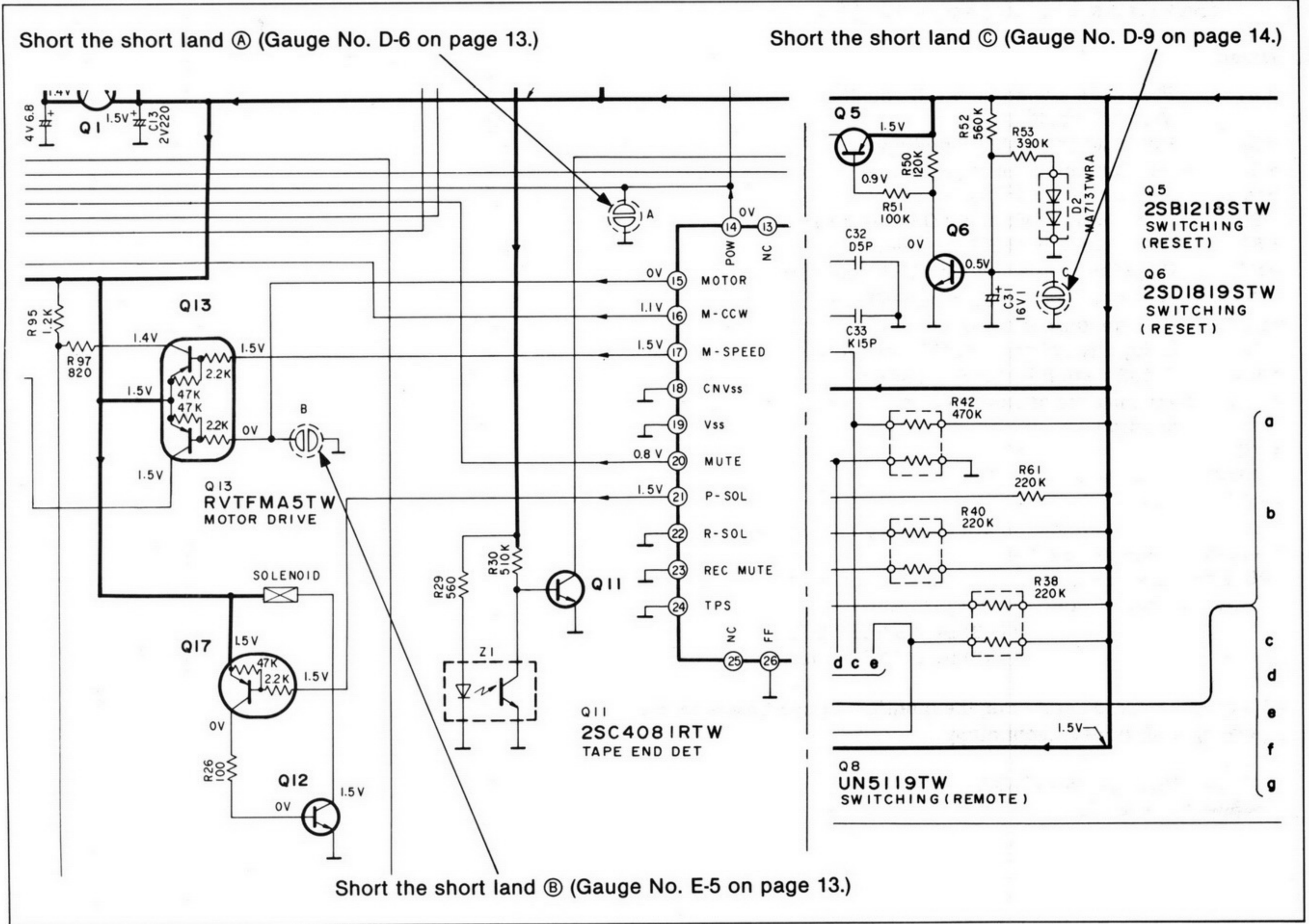
	Page
SCHEMATIC DIAGRAM.....	12~14
PRINTED CIRCUIT BOARDS AND WIRING CONNECTION DIAGRAM .....	15, 16
PACKING .....	17
TERMINAL FUNCTION OF IC.....	17, 18
REPLACEMENT PARTS LIST.....	19, 20
CABINET PARTS LOCATION .....	21
MECHANICAL PARTS LOCATION .....	21
RESISTORS & CAPACITORS .....	22

**Panasonic**

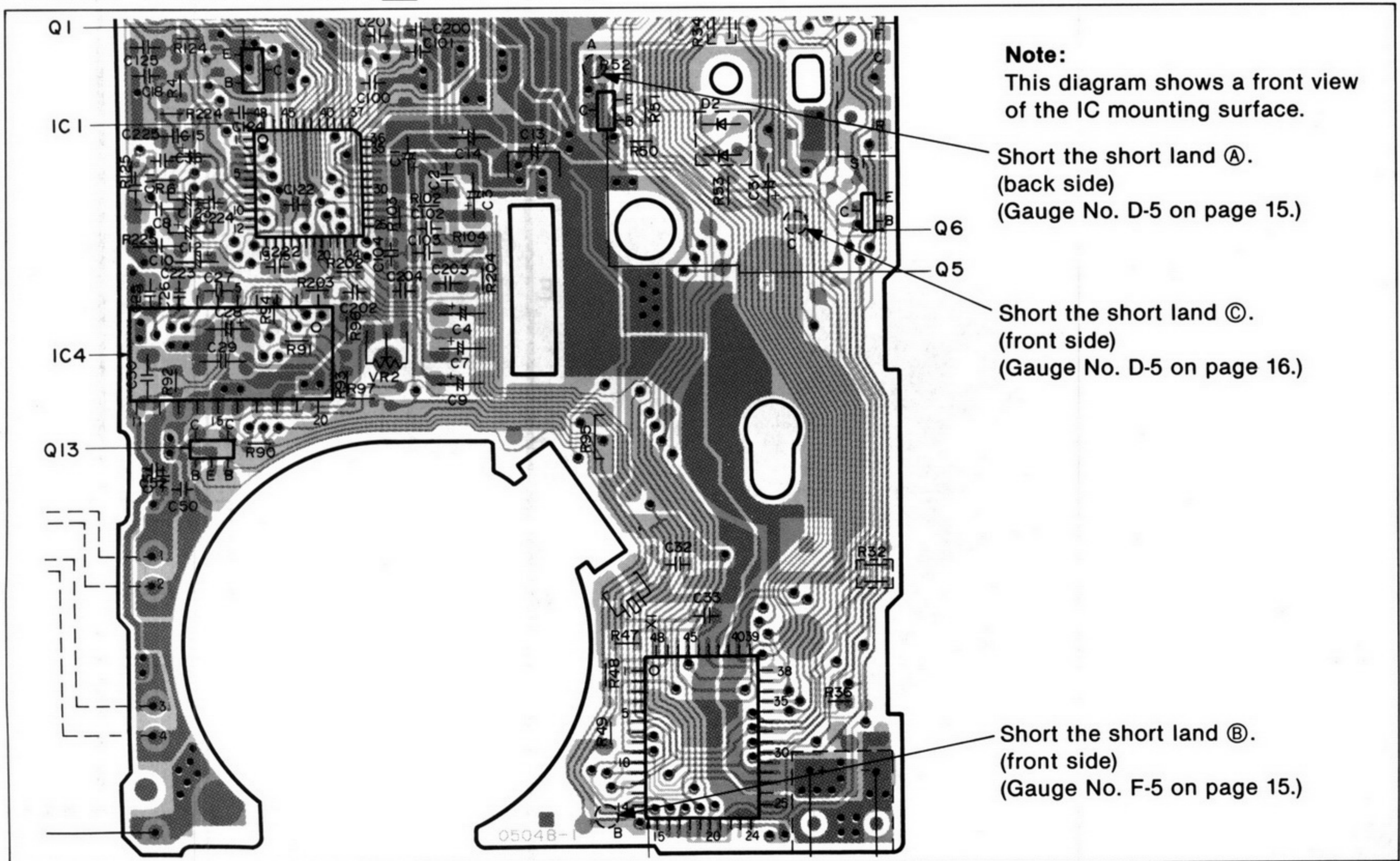


• Short points

**S** SCHEMATIC DIAGRAM (A main Circuit)



**P** PRINTED CIRCUIT BOARD (A Main P.C.B.)





# SCHEMATIC DIAGRAM

(See parts list on pages 19, 22.)

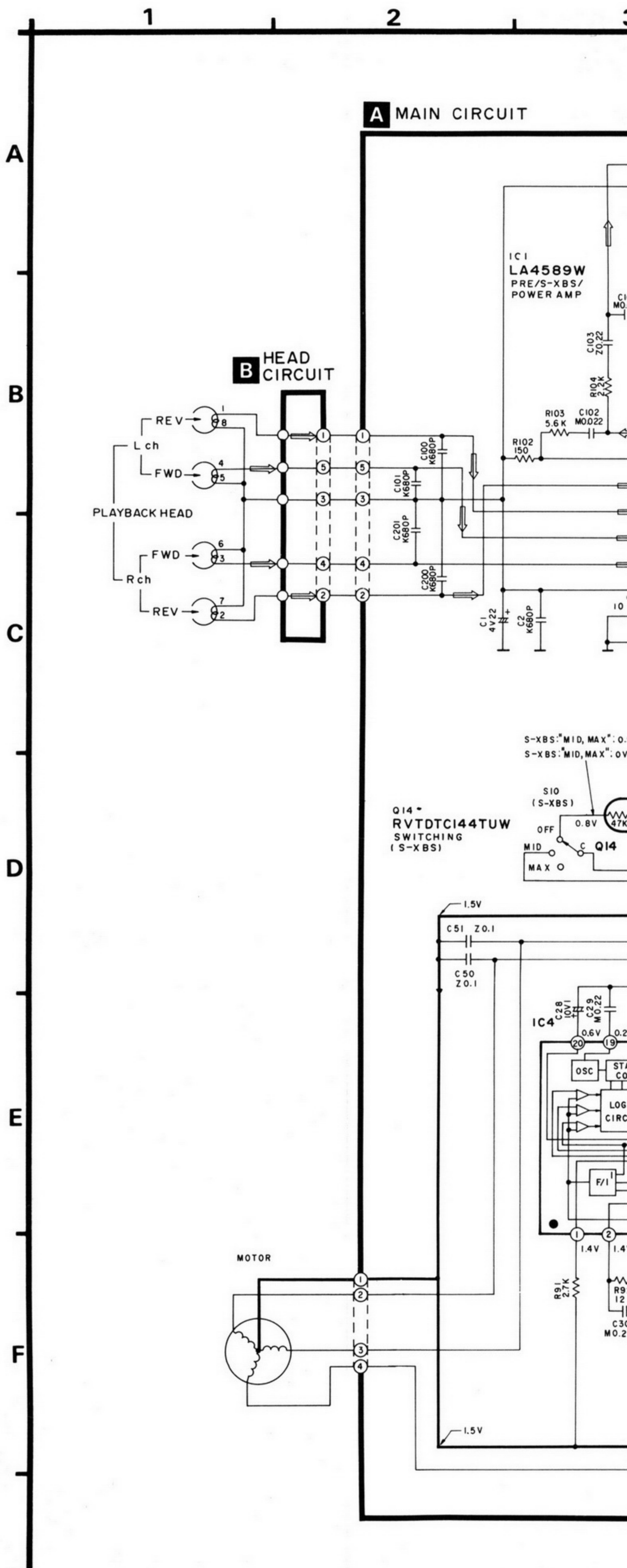
**Notes:**

- S1 : FWD/REV switch in "FWD" position.  
(F...FWD, R...REV)
- S2 : Hold switch in "OFF" position.
- S3 : Reverse mode selector switch in "↻" position.
- S4 : Rewind switch in "OFF" position.
- S5 : Fast forward switch in "OFF" position.
- S6 : Stop switch in "OFF" position.
- S7 : Play/direction switch in "OFF" position.
- S8-1 : Leaf (open/close) switch in "OPEN" position.
- S8-2 : Leaf (metal/normal) switch in "METAL" position.
- S9 : Dolby NR switch in "OFF" position.
- S10 : S-XBS switch in "OFF" position.
- S11 : Amenity sound control selector switch in "NORMAL" position.
  
- VR1-1, VR1-2 : Volume control VR.
- VR2 : Tape speed adjustment VR.
- DC voltage measurements are taken with electronics voltmeter from negative terminal of battery.
- No mark...Playback, < >...ASC switch in "MILD" position
- Battery current (Tape)...190mA (VR: MIN)  

203mA	< S-XBS "OFF" >	(VR: MAX)
210mA	< S-XBS "MAX" >	

• This schematic diagram may be modified at any time with the development of new technology.

⇨ : PLAYBACK SIGNAL  
 → : ⊕ B LINE





A MAIN CIRCUIT

