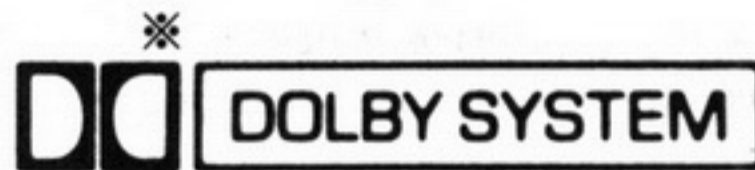


# Service Manual

Stereo Cassette Player

Mini Cassette  
**RQ-S45**



Color

(K)... Black Type

Area

Country Code	Area	Color
(E)	Continental Europe.	(K)
(EB)	Great Britain.	

※ Dolby noise reduction manufactured under license from Dolby Laboratories Licensing Corporation. "Dolby" and the double-D symbol are trade marks of Dolby Laboratories Licensing Corporation.

## AR90 MECHANISM SERIES

### ■ SPECIFICATIONS

#### General:

Power Requirement: Battery; 1.5V (one "AA" size battery)  
(Panasonic UM-3/R6P, AM3/LR6 or equivalent)  
Rechargeable Battery; DC 1.2V with an included Panasonic Rechargeable Battery (RP-BP61SYB) × 1  
AC; with optional Panasonic AC adaptor RP-AC11

Power Output: 6mW + 6mW

Input: DC IN; 1.5V (mini jack,  $\diamond$ — $\ominus$ — $\diamond$ )

Output: Headphones; 16Ω (φ3.5)

Dimensions: (W × H × D) 106 × 73.8 × 18.6mm

Weight: 153g (with rechargeable battery)

Charger: (E)

Input; AC 220V, 50Hz, 4W (RP-BC155EY-0)

(EB)

Input; AC 240V, 50Hz, 4W (RP-BC155EBYA)

Output; DC 1.2V, 350mA

Frequency Response:

15~20,000Hz (with a normal tape)  
15~20,000Hz (with a CrO<sub>2</sub> type tape)

15~20,000Hz (with a Metal tape)

Motor:

Electrical governor motor

Track System:

4-track 2-channel stereo playback

Tape Speed:

4.8cm/s

Design and specifications are subject to change without notice.

### ■ CONTENTS

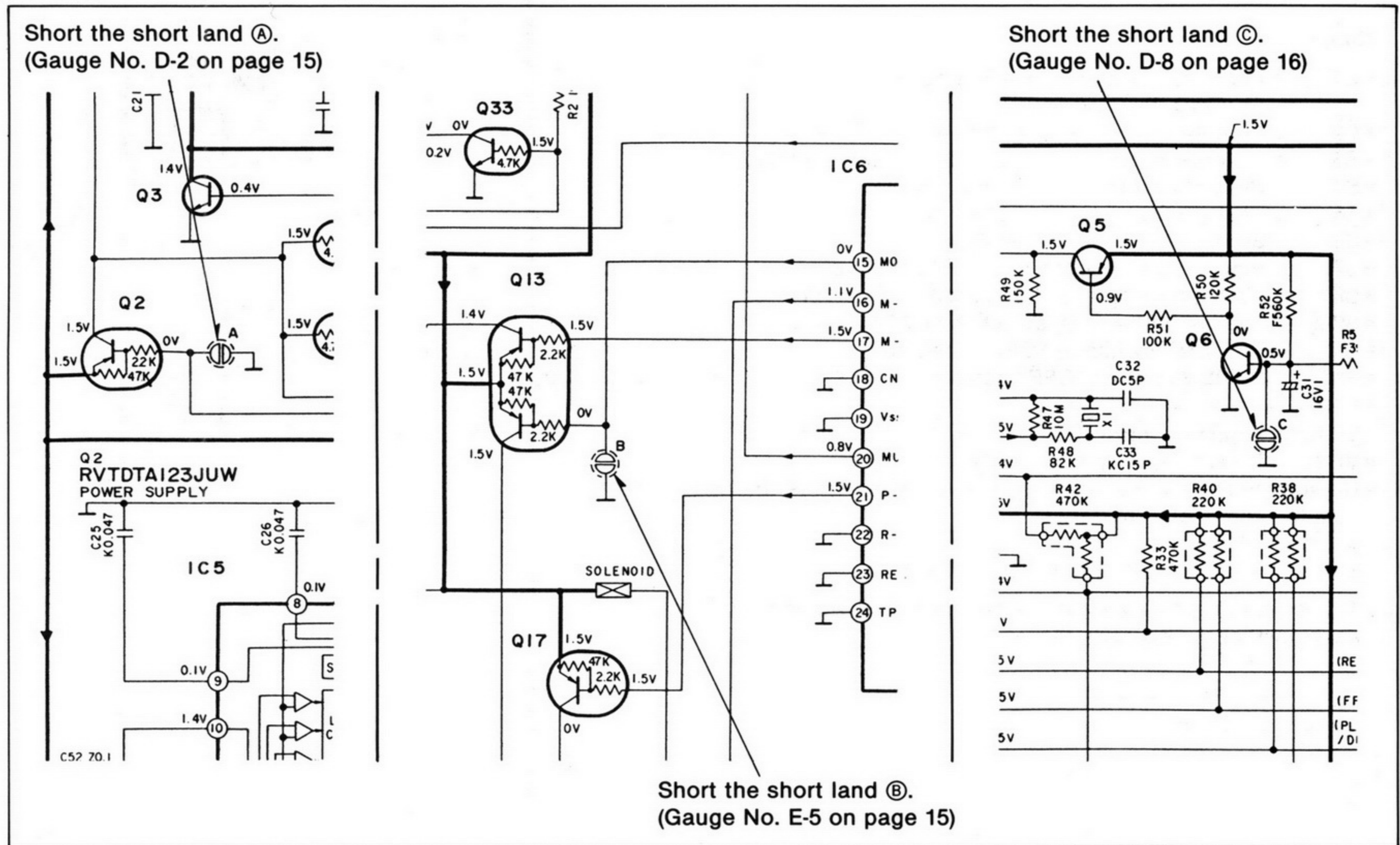
	Page
OPERATING INSTRUCTIONS .....	2~4
PROCEDURE FOR THE REPLACEMENT OF THE MECHANISM BLOCK .....	5
PROCEDURES FOR DISASSEMBLY OF THE MAIN PARTS ON THE MECHANISM .....	6
DISASSEMBLY INSTRUCTIONS .....	7~9
MEASUREMENTS AND ADJUSTMENTS .....	10
TERMINAL FUNCTION OF IC .....	10, 11
HOW TO CHECK OPERATIONS DURING DISASSEMBLY AND SERVICING .....	12, 13

	Page
SCHEMATIC DIAGRAM .....	14~16
PRINTED CIRCUIT BOARDS AND WIRING CONNECTION DIAGRAM .....	17, 18
REPLACEMENT PARTS LIST .....	19, 20
CABINET PARTS LOCATION .....	21
MECHANICAL PARTS LOCATION .....	21
RESISTORS & CAPACITORS .....	22, 23
PACKING .....	23

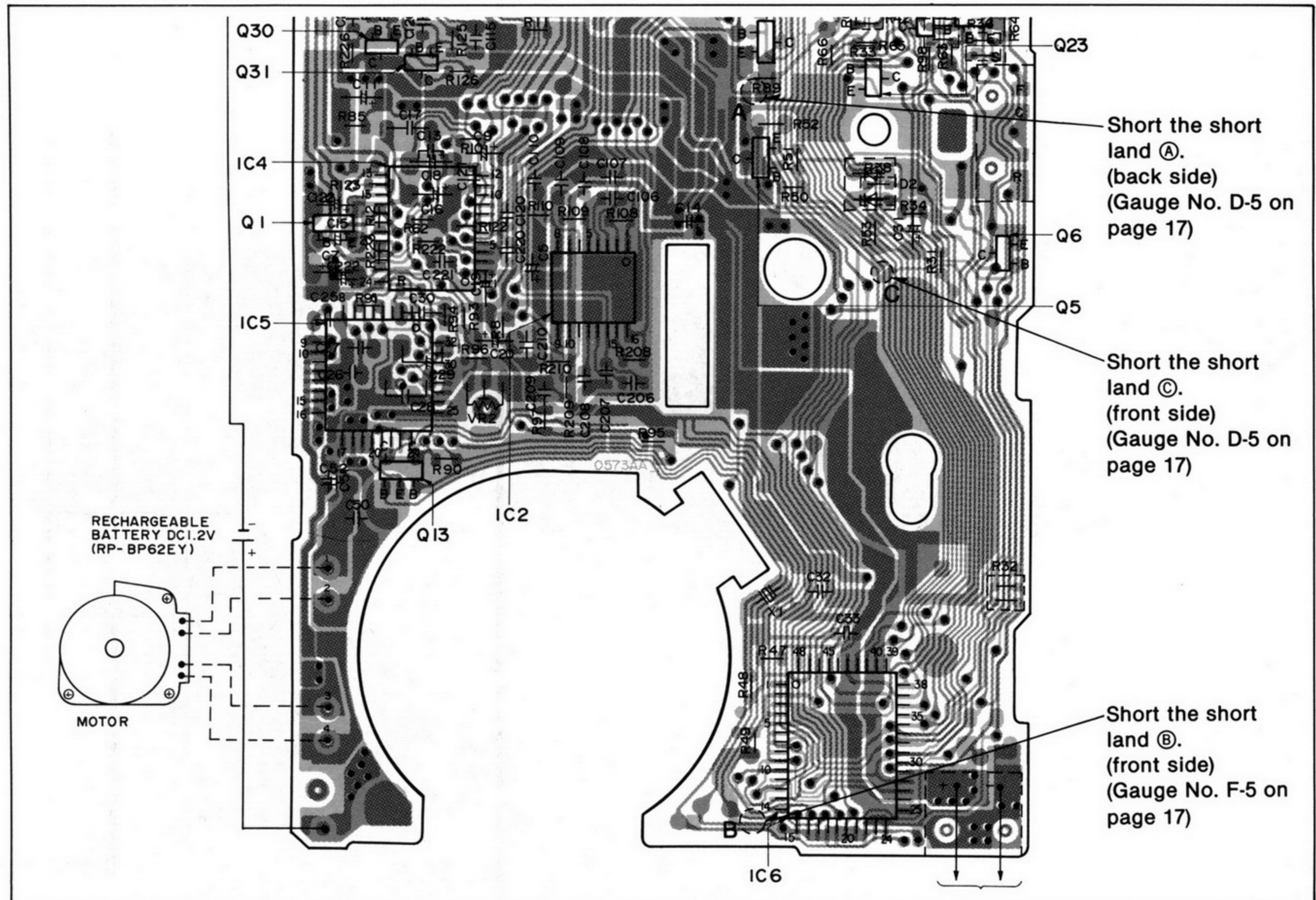
# Panasonic

• Short points

**SCHEMATIC DIAGRAM (A Main Circuit)**



**PRINTED CIRCUIT BOARD (A Main P.C.B.)**



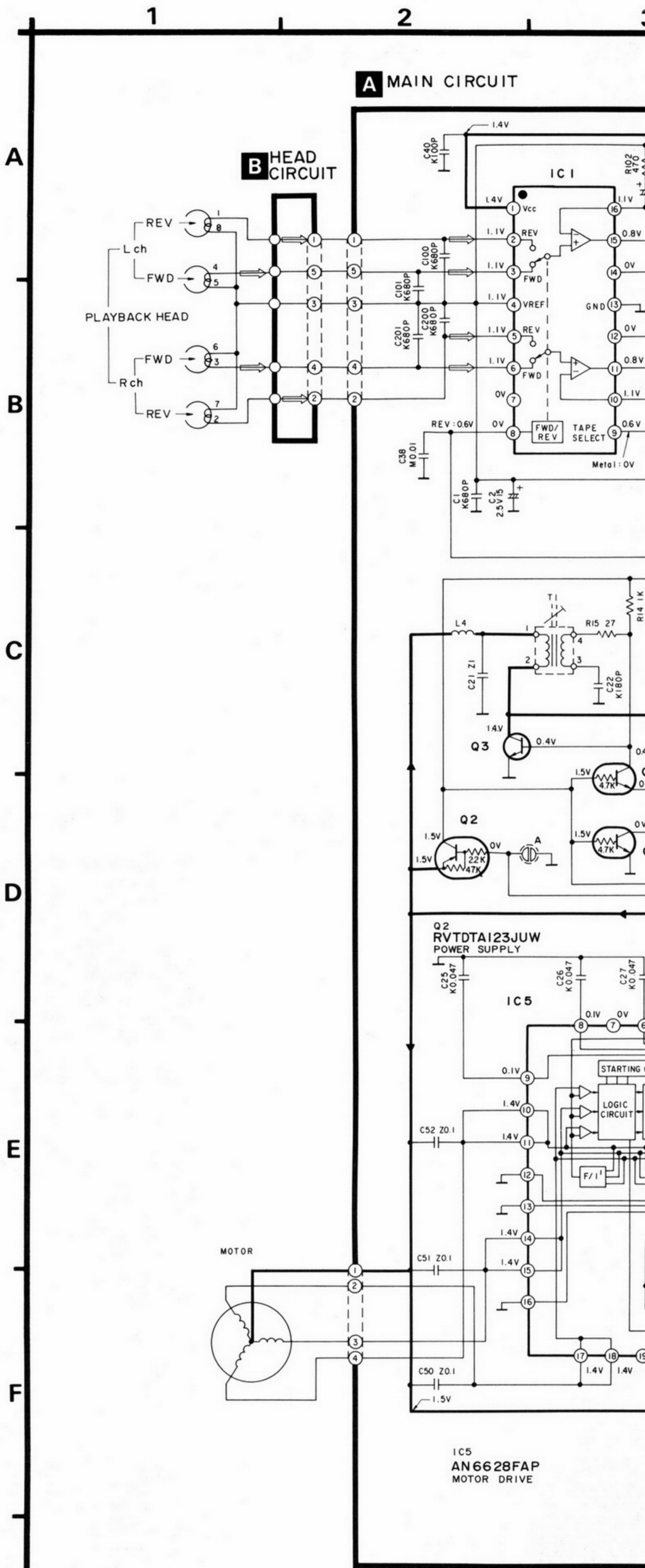
# SCHEMATIC DIAGRAM

(See parts list on pages 19, 22, 23.)

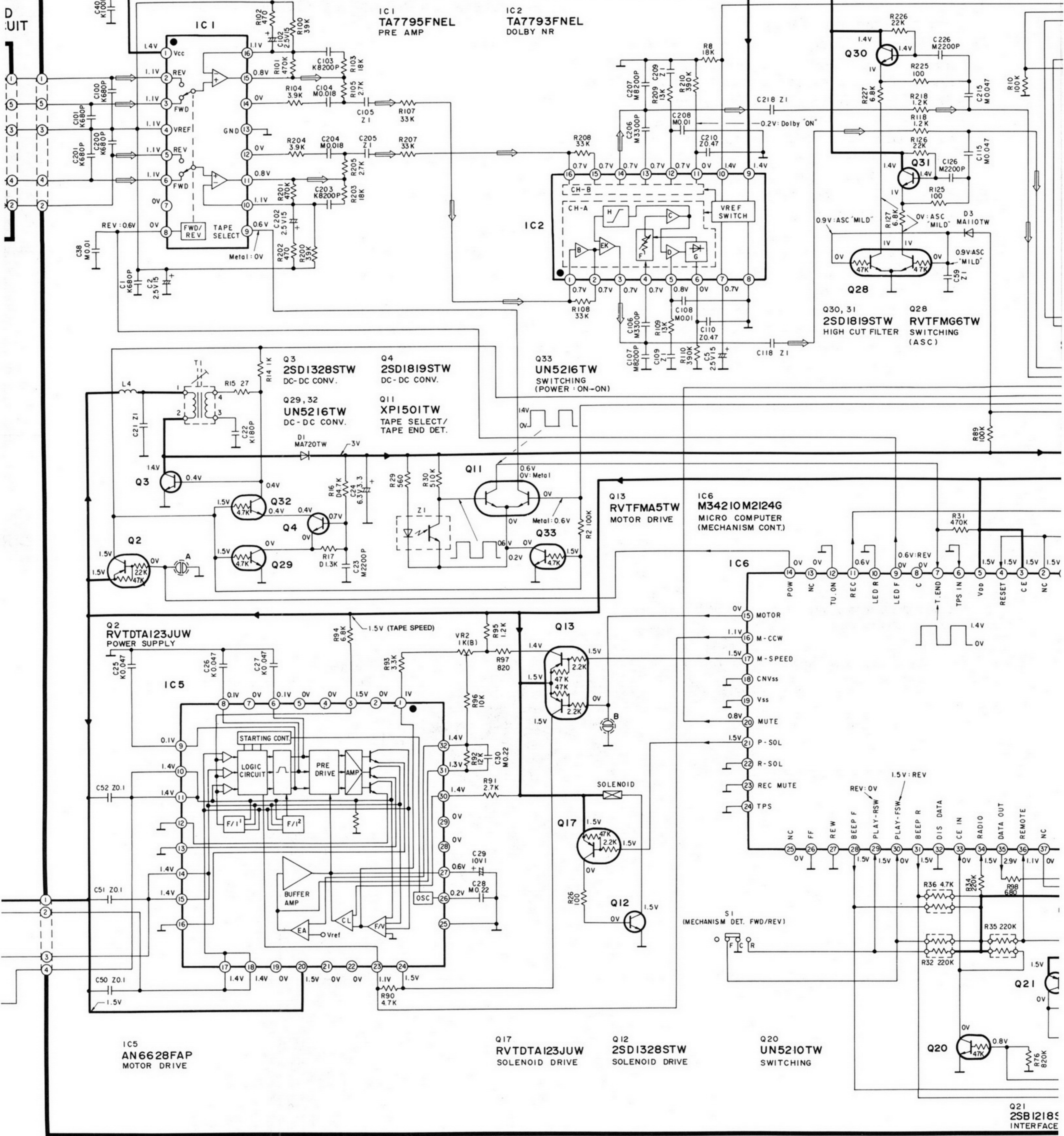
**Notes:**

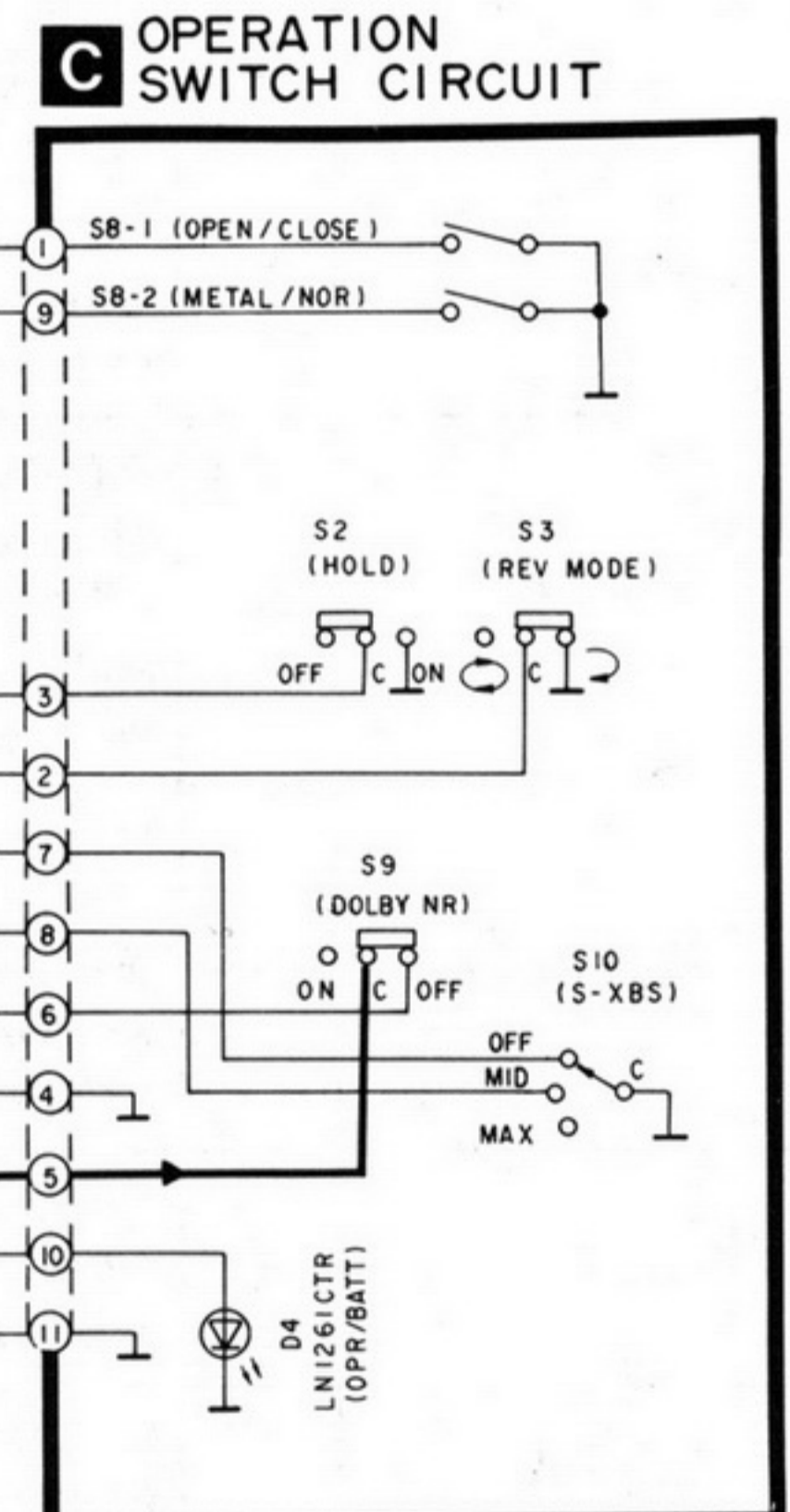
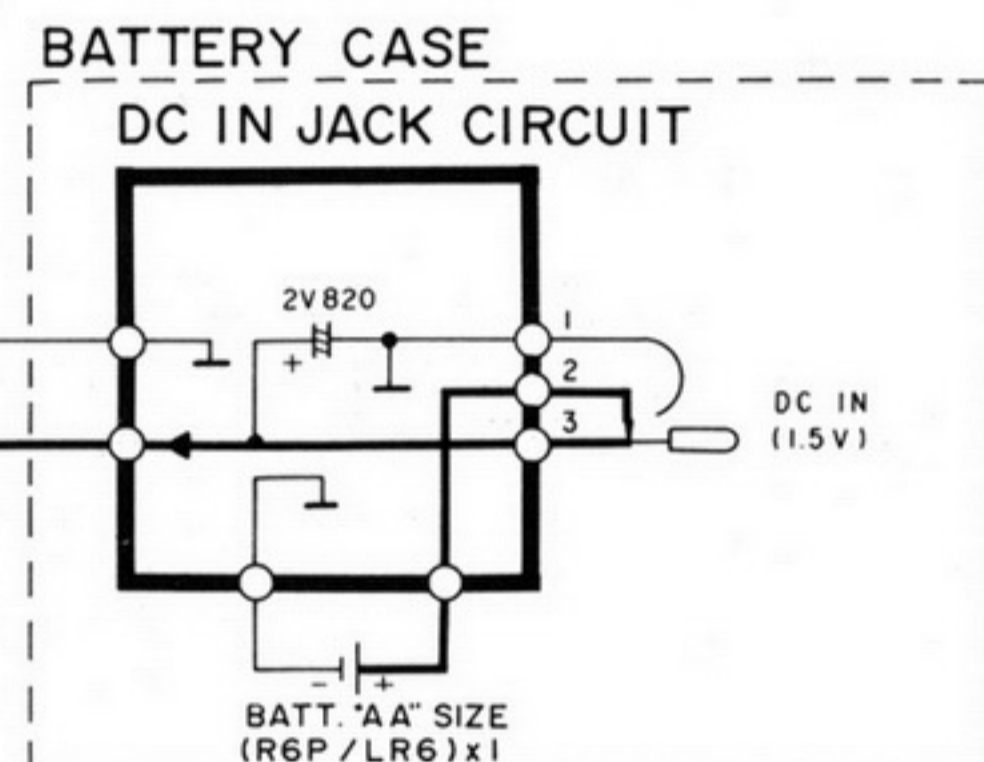
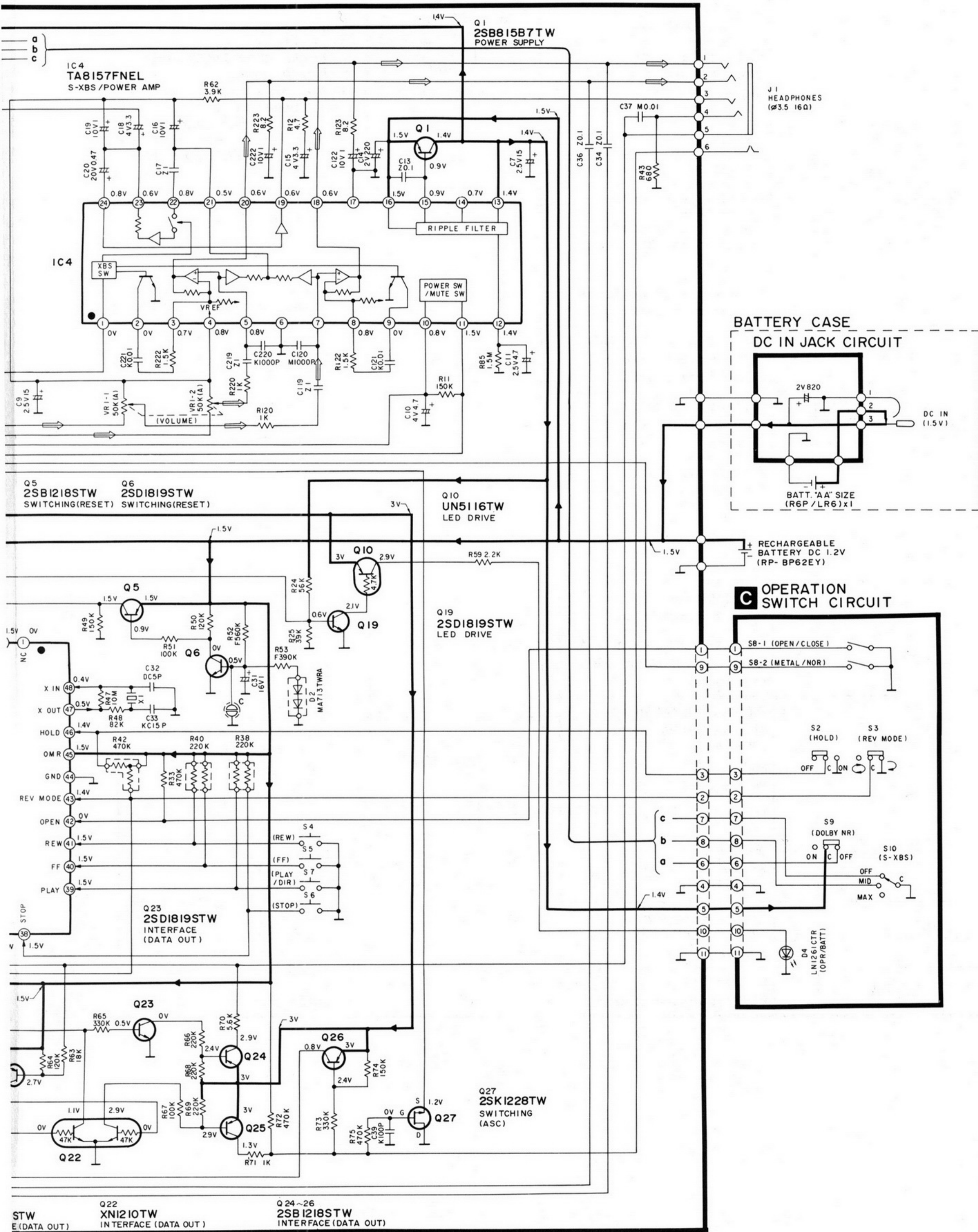
- S1 : FWD/REV switch in "FWD" position. (F...FWD, R...REV)
- S2 : Hold switch in "OFF" position.
- S3 : Reverse mode selector switch in "↶" position.
- S4 : Rewind switch in "OFF" position.
- S5 : Fast forward switch in "OFF" position.
- S6 : Stop switch in "OFF" position.
- S7 : Play/direction switch in "OFF" position.
- S8-1 : Leaf (open/close) switch in "OFF" position.
- S8-2 : Leaf (metal/normal) switch in "OFF" position.
- S9 : Dolby NR switch in "OFF" position.
- S10 : S-XBS switch in "OFF" position.
- VR1-1, VR1-2 : Volume control VR.
- VR2 : Tape speed adjustment VR.
- DC voltage measurements are taken with electronics voltmeter from negative terminal of battery.  
No mark...Playback
- Battery current (Tape)...170~185mA (VR: MAX)
- **This schematic diagram may be modified at any time with the development of new technology.**

⇨ : PLAYBACK SIGNAL  
 ⇨ : ⊕ B LINE



A MAIN CIRCUIT





Q22 XN1210TW IN INTERFACE (DATA OUT)  
 Q24~26 2SB1218TW INTERFACE (DATA OUT)