

# Service Manual

Radio Cassette

## RQ-V152

Stereo Radio Cassette Player

Color

(K)..... Black Type

Area

Country Code	Areas	Color
[E]	Continental Europe.	(K)
[EG]	F.R. Germany/ Italy.	



### ■ SPECIFICATIONS

#### General:

Power Requirement: Battery; 3V (Two "AA" size, R6/LR6 batteries)

AC; with optional Panasonic AC adaptor RP-AC33

Power Output: 40mW (20mWx2)···RMS (max.)

Input: DC IN; 3V (⊖ ⊕)

Output: Headphones; 24 Ω, ϕ 3.5

Dimensions: 87.8(W)×121(H)×35.9(D)mm

Weight: 231g without batteries

#### Radio Section:

Radio Frequency Range: FM 87.5~108MHz  
AM 520~1610kHz

Intermediate Frequency: FM 10.7MHz  
AM 459kHz

Sensitivity: FM 2.5 μV/0.5mW output  
(-3dB Limit, Sens)  
AM; 120 μV/m/0.5mW output

#### Tape Deck Section:

Frequency Response: Normal.....50~14,000Hz

Tape Speed: 4.8cm/s

Program Time: 1 hour with C-60 cassette tape

Track System: 4-track, 2-channel, stereo playback

#### Notes:

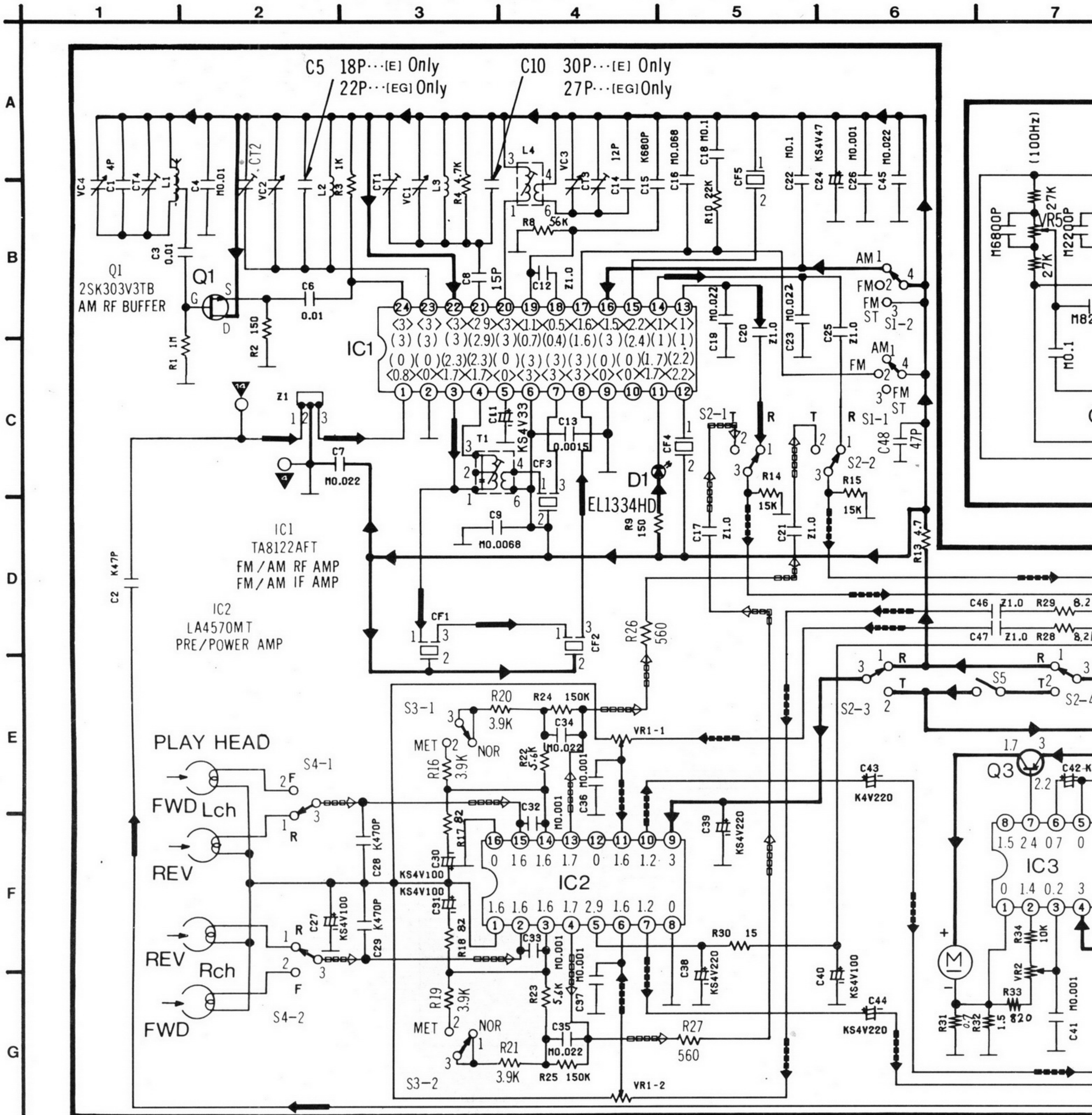
1. Weights and dimensions shown are approximate.

2. Design and specifications are subject to change without notice.

# Panasonic



SCHEMATIC DIAGRAM

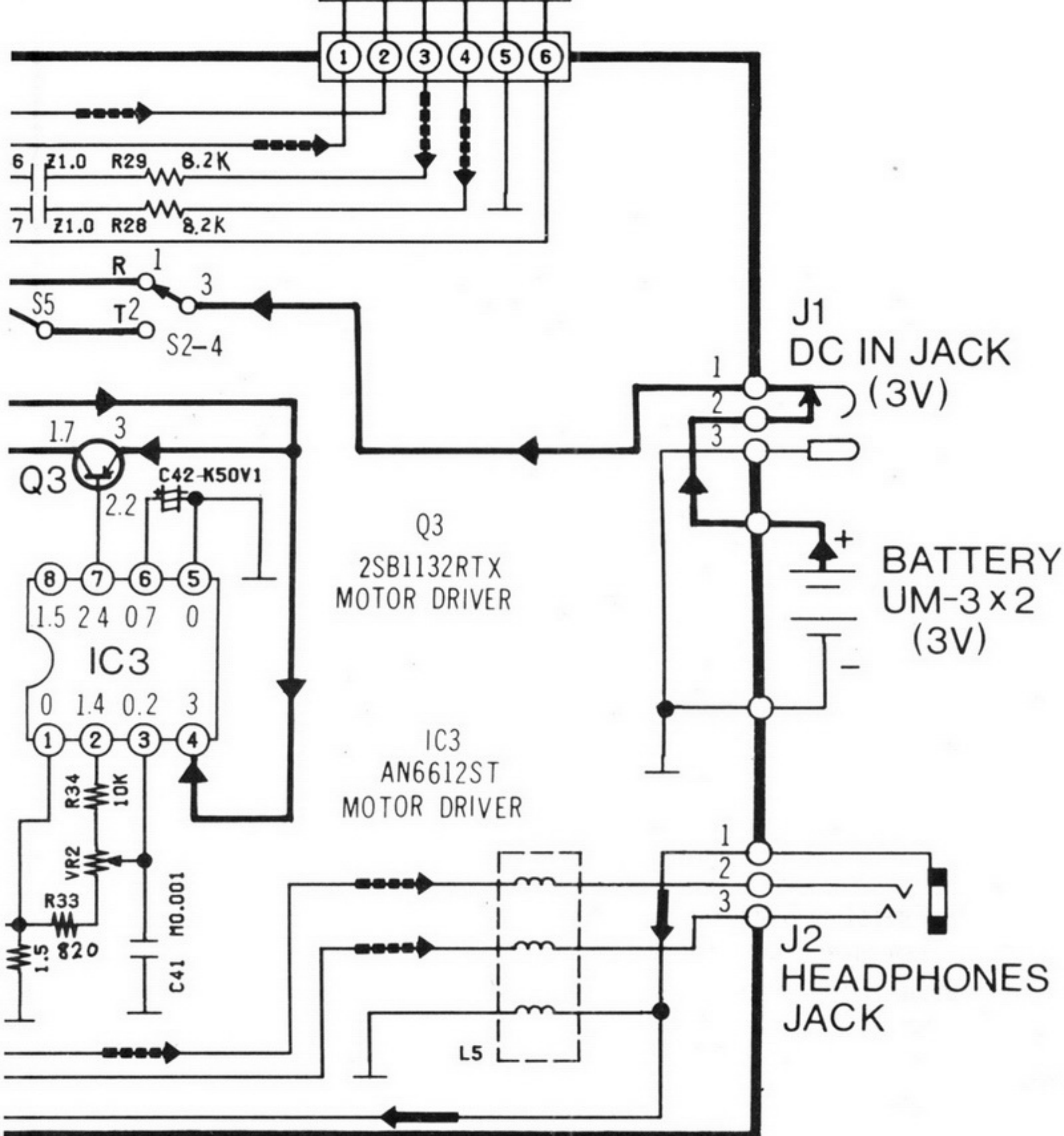
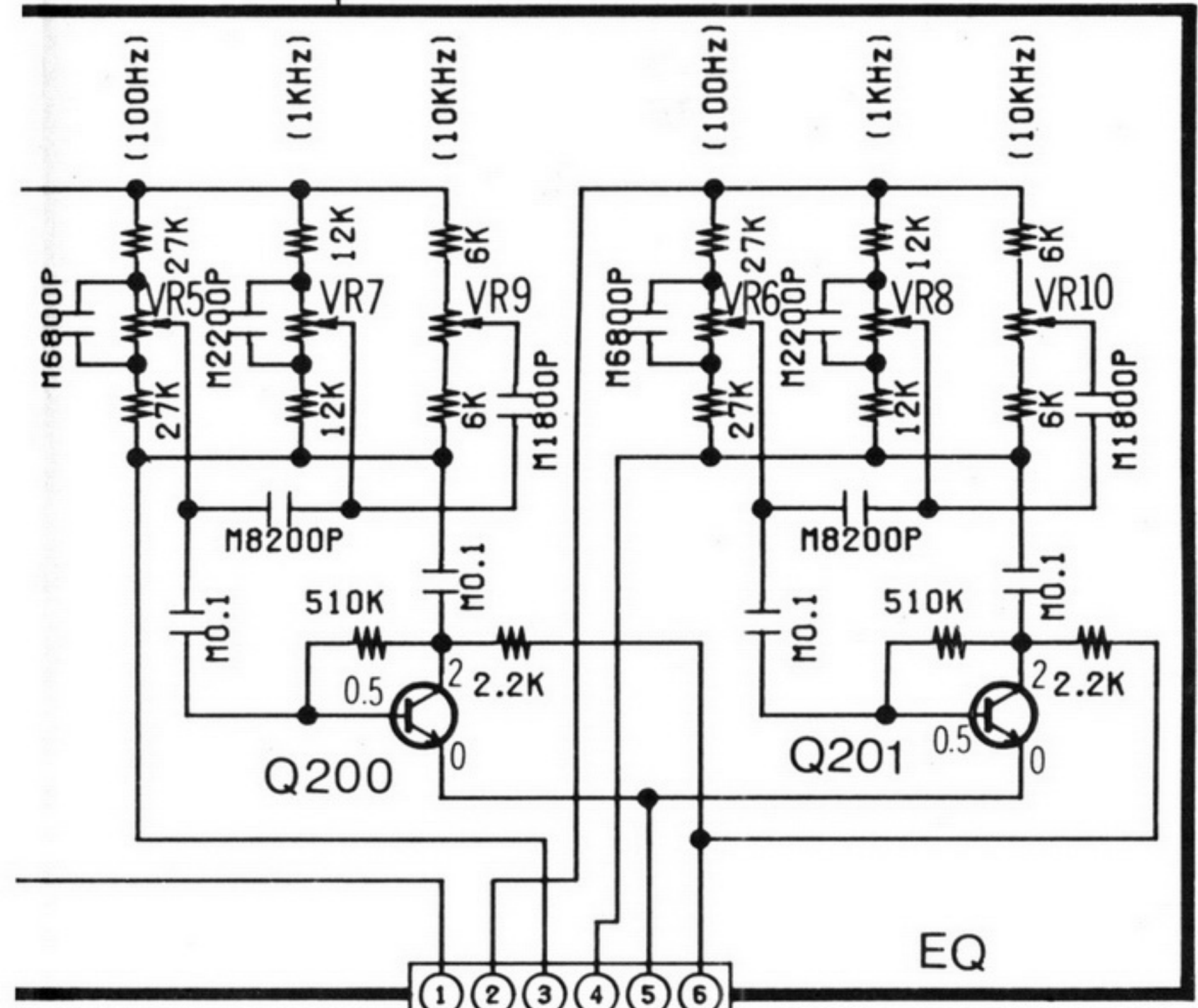


Notes:

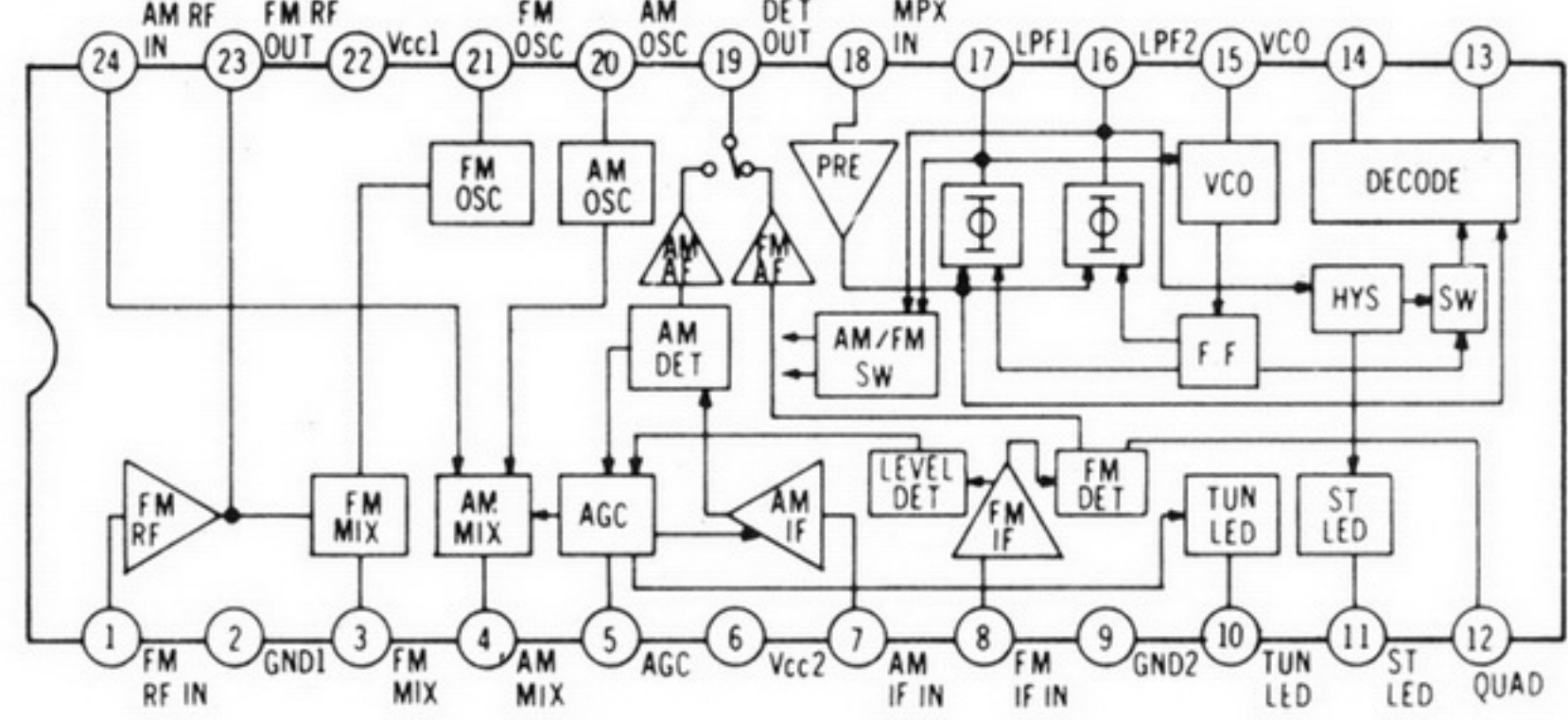
- |  |   |                          |
|--|---|--------------------------|
| 1. S1-1, S1-2: Band select switch in AM position.<br>(1...AM, 2...FM, 3...FM ST)     | 5. S5: Motor switch in "OFF" position.                | 10. DC volt<br>voltmeter |
| 2. S2-1 ~ S2-4: Function switch in "RADIO" position.<br>(1...RADIO, 2...TAPE)        | 6. VR1-1, 1-2: Volume control VR.                     | < >...                   |
| 3. S3-1, S3-2: Tape selector switch in "NORMAL" position.<br>(1...Normal, 2...Metal) | 7. VR2: Tape speed adjustment VR.                     | No mar                   |
| 4. S4-1, S4-2: FWD/REV select switch in "REV" position.<br>(1...REV, 2...FWD)        | 8. VR5 ~ 10: Graphic equalizer VR (100Hz/1kHz/10kHz)  | 11. Battery              |
|  | VR5,6 : 100Hz   |                          |
|  | VR7,8 : 1kHz  |                          |
|  | VR9,10 : 10kHz  |                          |
|  | 9. The mark (▼) shows test point e.g. ▼=test point 1. |                          |



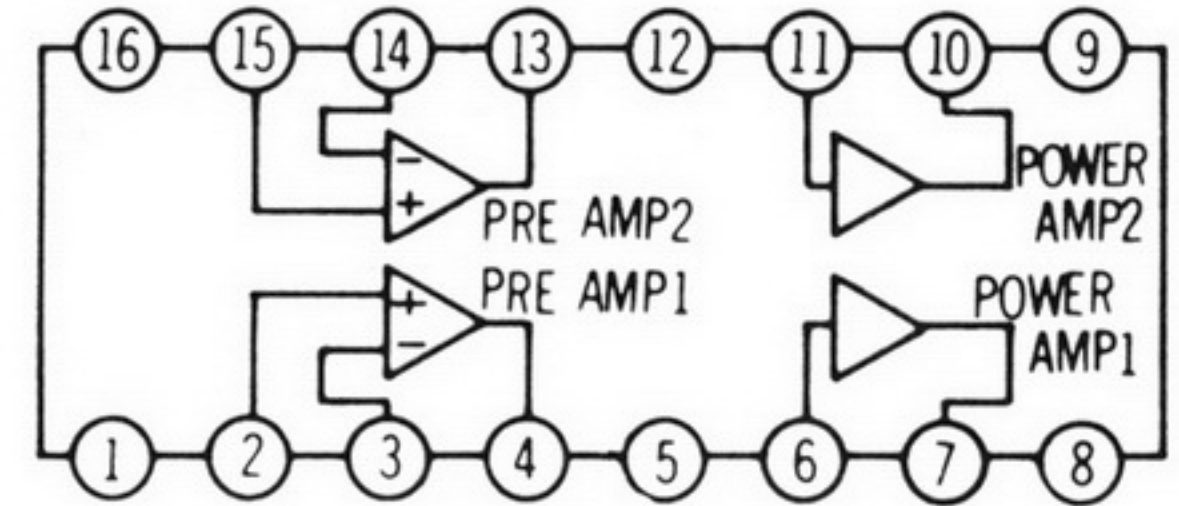
**Notes:**  
 •The replacement part for the GRAPHIC EQ BLOCK is supplied only as part of an assembly.  
 •It is not available individually.



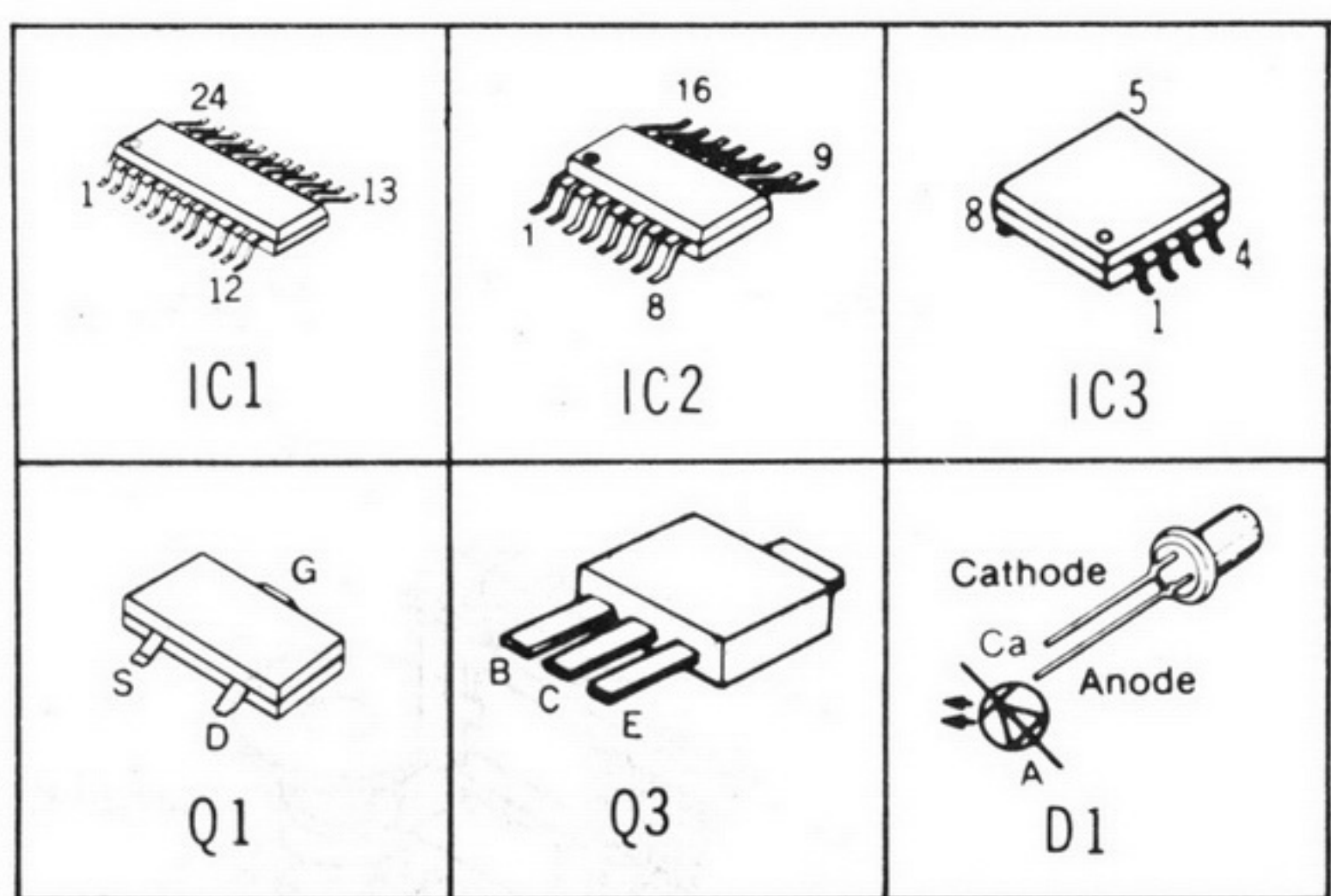
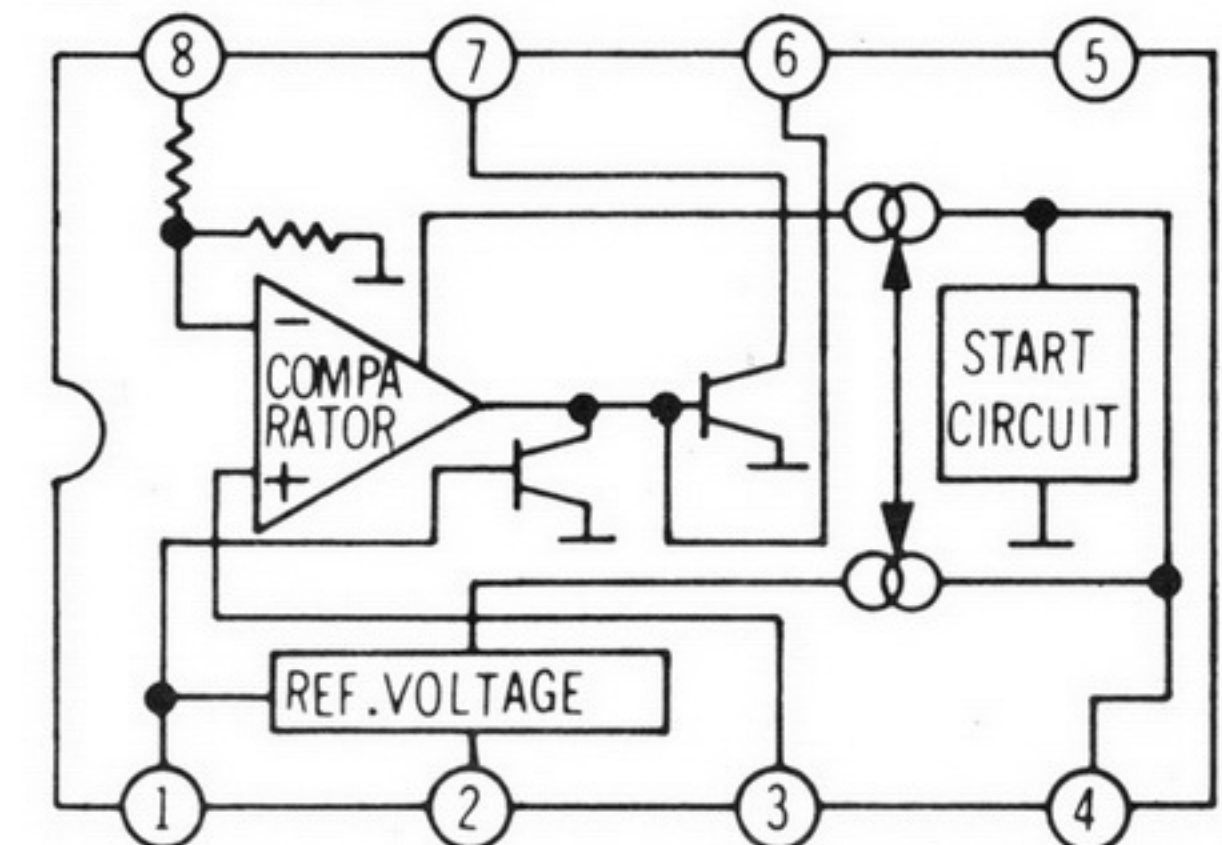
### IC1 TA8122AFT



### IC2 LA4570MT



### IC3 AN6612ST



10. DC voltage measurement are taken with electronics voltmeter from negative terminal of battery.  
 < >...FM position, ( )...AM position.  
 No mark.....Playback position,

11. Battery current: Volume minimum output (Radio) .....27mA  
 Volume maximum output (Radio).....40mA  
 Volume minimum output (Tape).....160mA  
 Volume maximum output (Tape).....180mA  
 Radio, 74dB 30% Modulation  
 Tape, 315 Hz 0dB tape playback

12. +B Voltage Line.  
 Playback Signal.  
 FM Signal.  
 Playback and Radio Signal.