

# Service Manual

Radio Cassette

## RQ-V156

Stereo Radio Cassette Player

Color

(K)..... Black Type

Area

Suffix for Model No	Areas	Colour
[E]	Continental Europe.	(K)
[EG]	F.R. Germany/ Italy.	



### ■ SPECIFICATIONS

#### General:

Power Requirement: Battery; 3V (Two "AA" size, R6/LR6 batteries)

AC; with optional Panasonic AC adaptor RP-AC33

Power Output: 40mW (20mWx2)···RMS (max.)

Input: DC IN; 3V (⊖ ⊕)

Output: Headphones; 20 Ω, ϕ3.5

Dimensions: 87.8(W)x121(H)x34.2(D)mm

Weight: 234g without batteries

#### Radio Section:

Radio Frequency Range: FM 87.5~108MHz

AM 520~1610kHz

Intermediate Frequency: FM 10.7MHz

AM 459kHz

Sensitivity: FM 2.5μV/0.5mW output

(-3dB Limit, Sens)

AM; 120μV/m/0.5mW output

#### Tape Deck Section:

Frequency Response: 60~14000Hz (Normal, CrO<sub>2</sub>/Metal)

Tape Speed: 4.8cm/s

Program Time: 1 hour with C-60 cassette tape

Track System: 4-track, 2-channel, stereo playback

#### Notes:

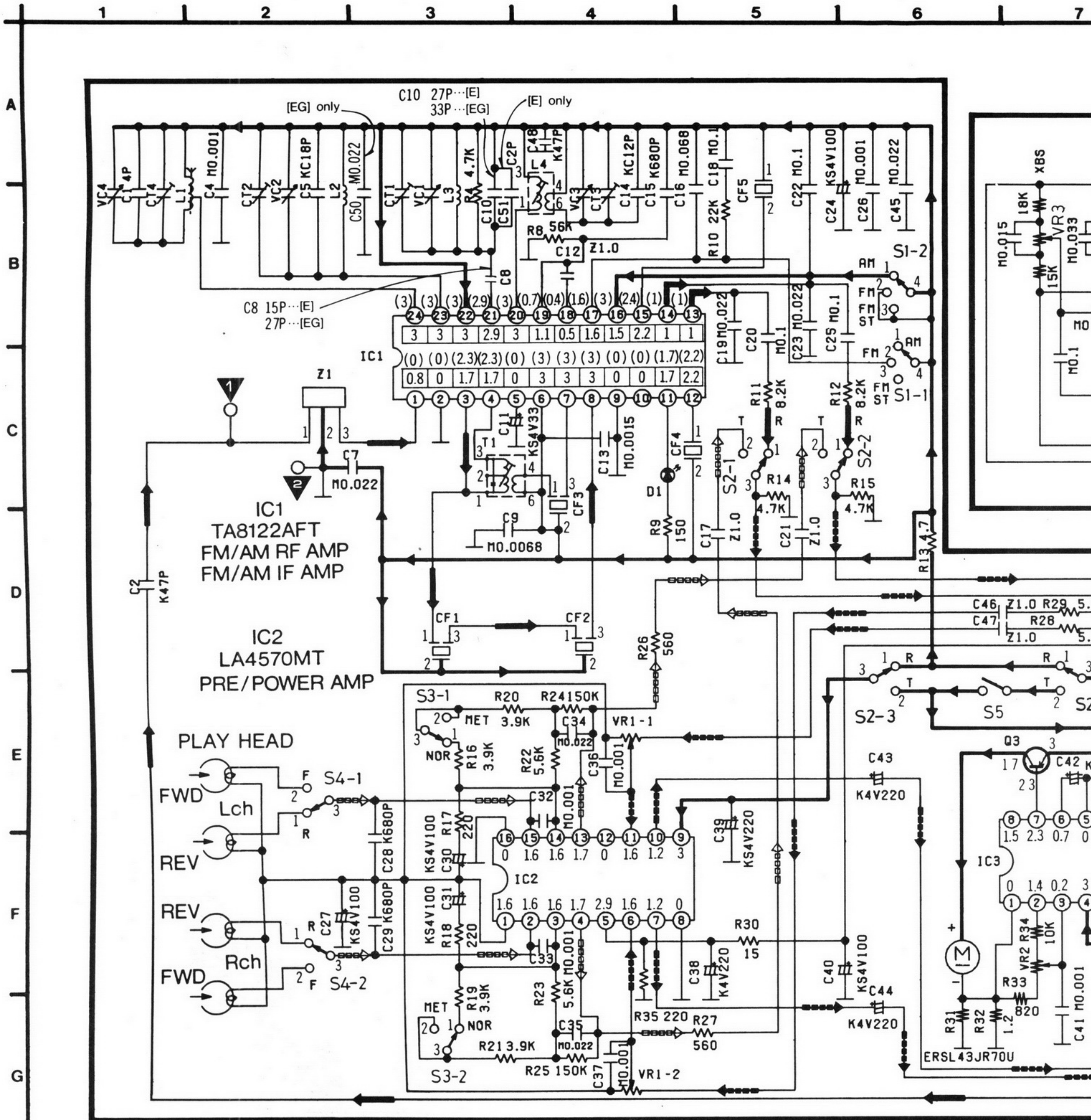
1. Weights and dimensions shown are approximate.

2. Design and specifications are subject to change without notice.

# Panasonic



SCHEMATIC DIAGRAM



Notes:

- 1. S1-1, S1-2: Band select switch in AM position.  
(1...AM, 2...FM/DX, 3...FM/LOCAL.)
- 2. S2-1 ~ S2-4: Function switch in "RADIO" position.  
(1...RADIO, 2...TAPE) RADIO,
- 3. S3-1, S3-2: Tape selector switch in "NORMAL". position.  
(1...Normal, 2...Metal)
- 4. S4-1, S4-2: FWD/REW select switch in "REV" position.  
(1...REV, 2...FWD)
- 5. S5: Motor switch in "OFF" position.
- 6. VR1-1, 1-2: Volume control VR.
- 7. VR2: Tape speed adjustment VR.
- 8. VR3 ~ 8: Graphic Equalizer VR (70Hz/200Hz/10kHz)  
VR3, 4: 70Hz (XBS LEVEL Control)  
VR5, 6: 220Hz (BASS Control)  
VR7, 8: 10kHz (TREBLE Control)
- 9. The mark (▼) shows test point e.g. ▼=test point 1.



7

8

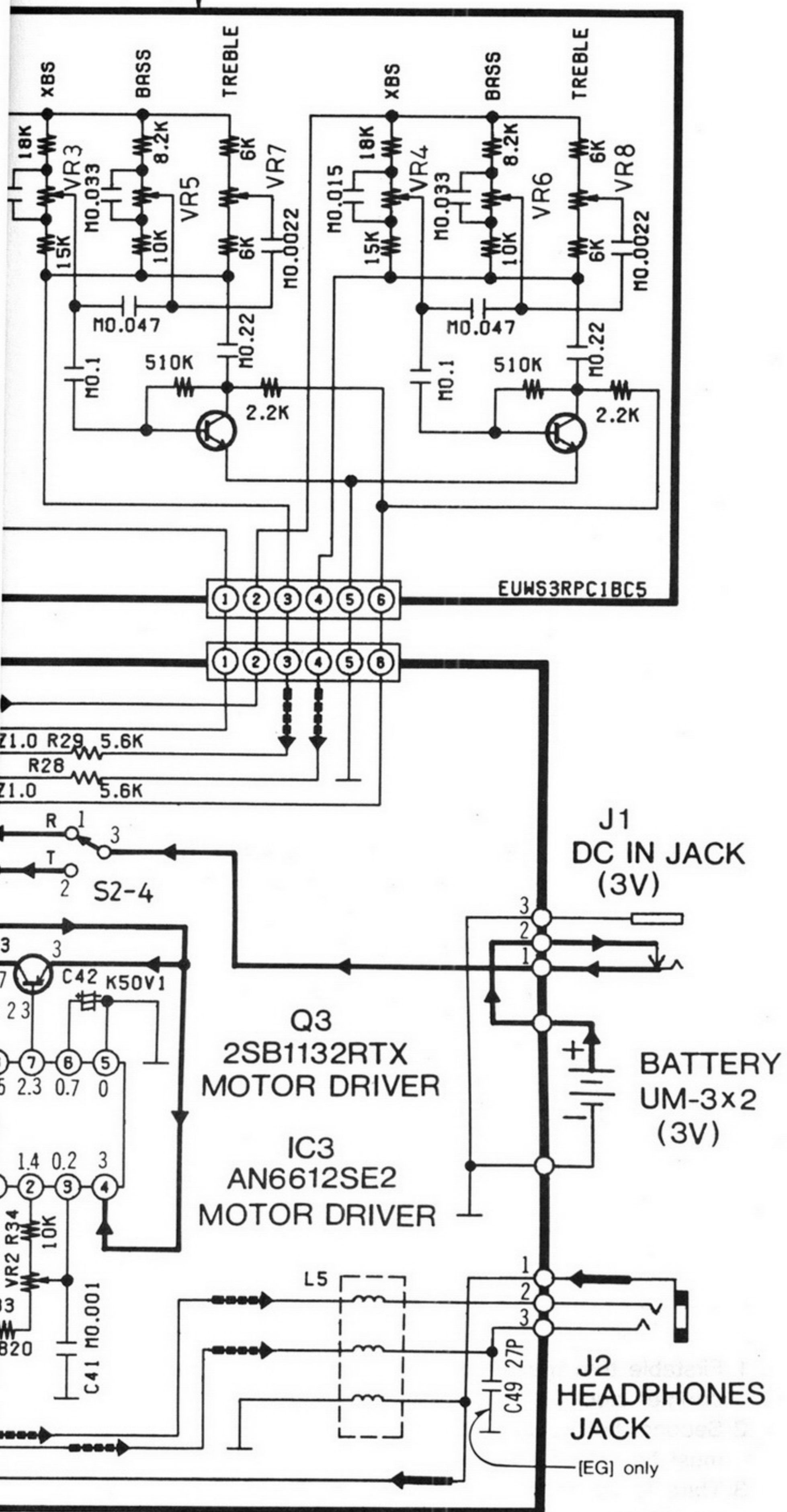
9

10

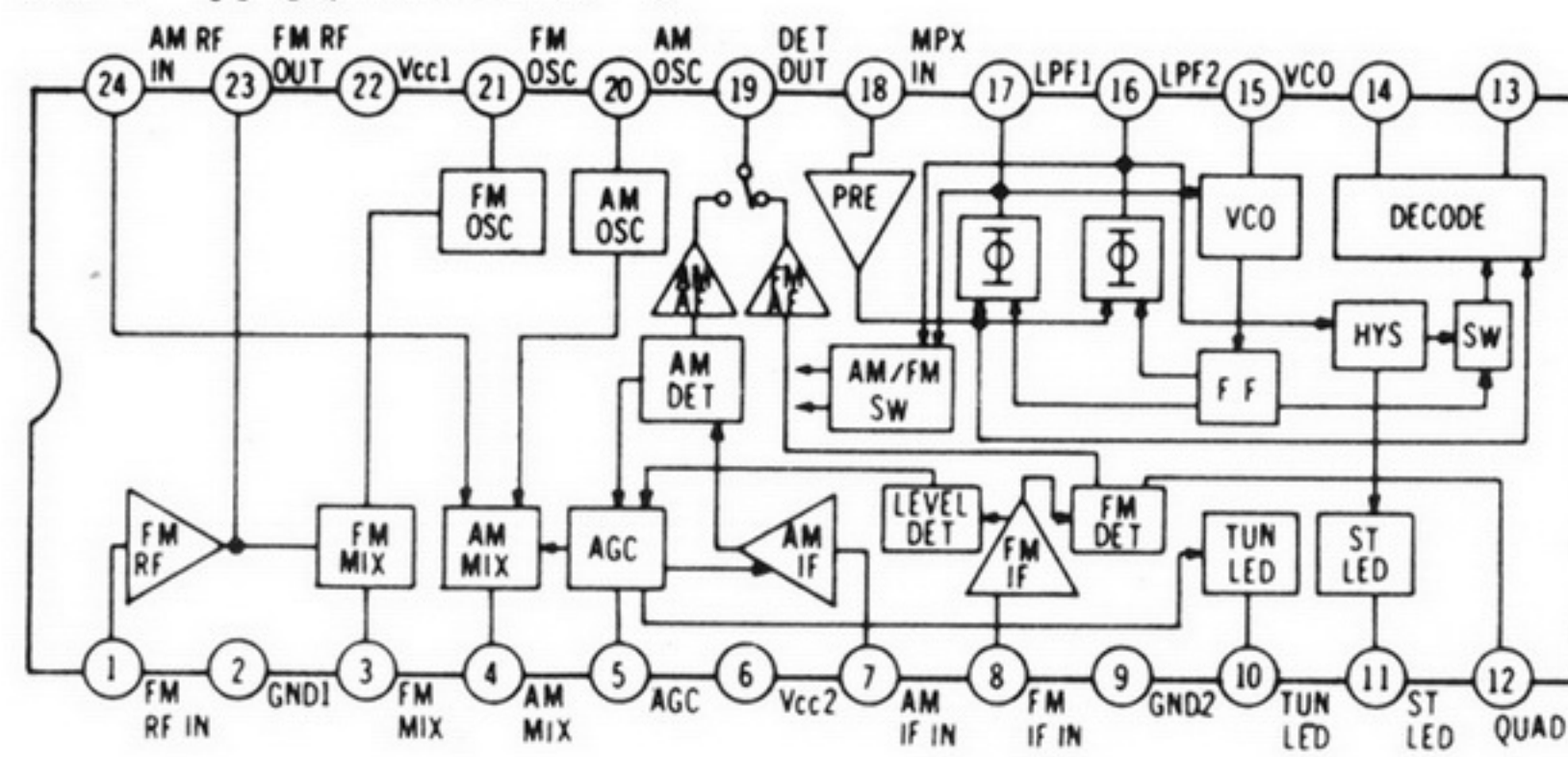
11

12

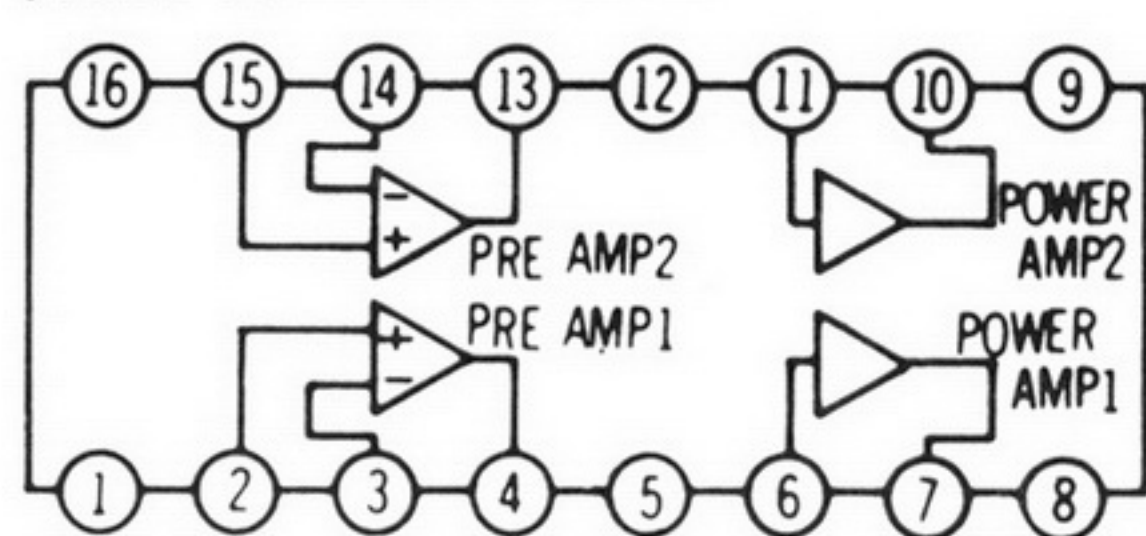
**Notes:**  
 •The replacement part for the GRAPHIC EQ BLOCK is supplied only as part of an assembly.  
 •It is not available individually.



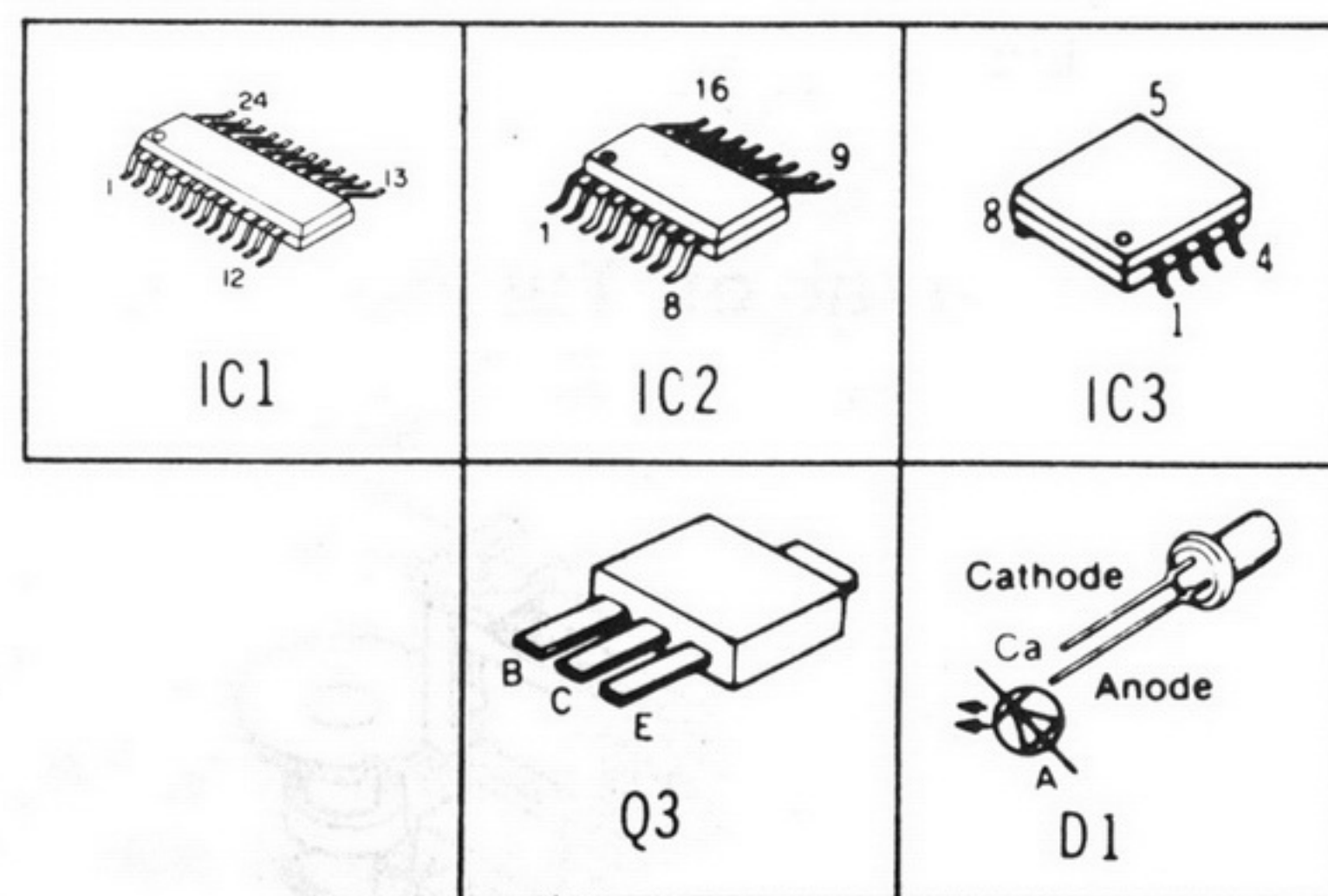
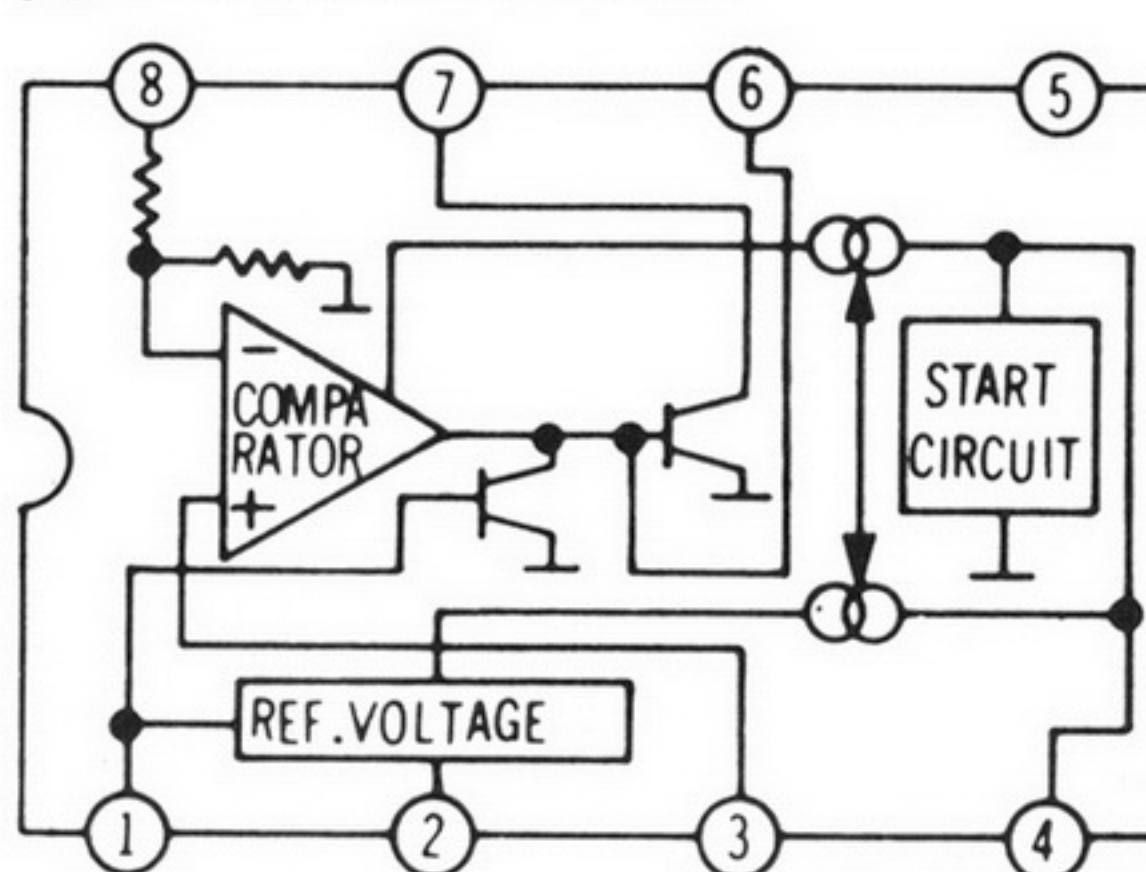
## IC1 TA8122AFT



## IC2 LA4570MT



## IC3 AN6612SE2



10. DC voltage measurement are taken with electronics voltmeter from negative terminal of battery.

□...FM position, ( )...AM position.

No mark.....Playback position,

Hz)

11. +B Voltage Line.

Playback Signal.

FM Signal.

Playback and Radio Signal.

12. Battery current: Volume minimum output (Radio)..... 27mA  
 Volume maximum output (Radio)..... 40mA  
 Volume minimum output (Tape).....160mA  
 Volume maximum output (Tape).....180mA  
 (Radio, 74dB 30% Modulation  
 Tape, 315 Hz 0dB tape playback)