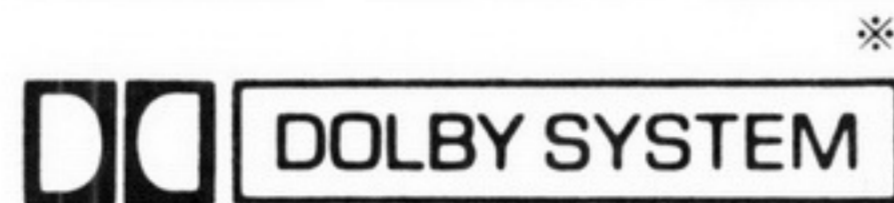


Service Manual

Radio Cassette

RQ-V162

Stereo Radio Cassette Player



Color

(K)..... Black Type

Area

Country Code	Areas	Color
[E]	Continental Europe.	(K)
[EG]	F.R. Germany/ Italy.	



■ SPECIFICATIONS

General:

Power Requirement: Battery; 3V (Two "AA" size, R6/LR6 batteries)

AC; with optional Panasonic AC adaptor RP-AC33

Power Output: 40mW (20mWx2)···RMS (max.)

Input: DC IN; 3V (⊖ ⊕)

Output: Headphones; 20 Ω, ϕ3.5

Dimensions: 87.8(W)x121(H)x34.6(D)mm

Weight: 246g without batteries

Radio Section:

Radio Frequency Range: FM 87.5~108MHz
AM 520~1610kHz

Intermediate Frequency: FM 10.7MHz
AM 459kHz

Sensitivity: FM 2.5μV/0.5mW output
(-3dB Limit, Sens)
AM; 120μV/m/0.5mW output

Tape Deck Section:

Frequency Response: 50~14,000Hz (Normal, CrO₂/Metal)

Tape Speed: 4.8cm/s

Program Time: 1 hour with C-60 cassette tape

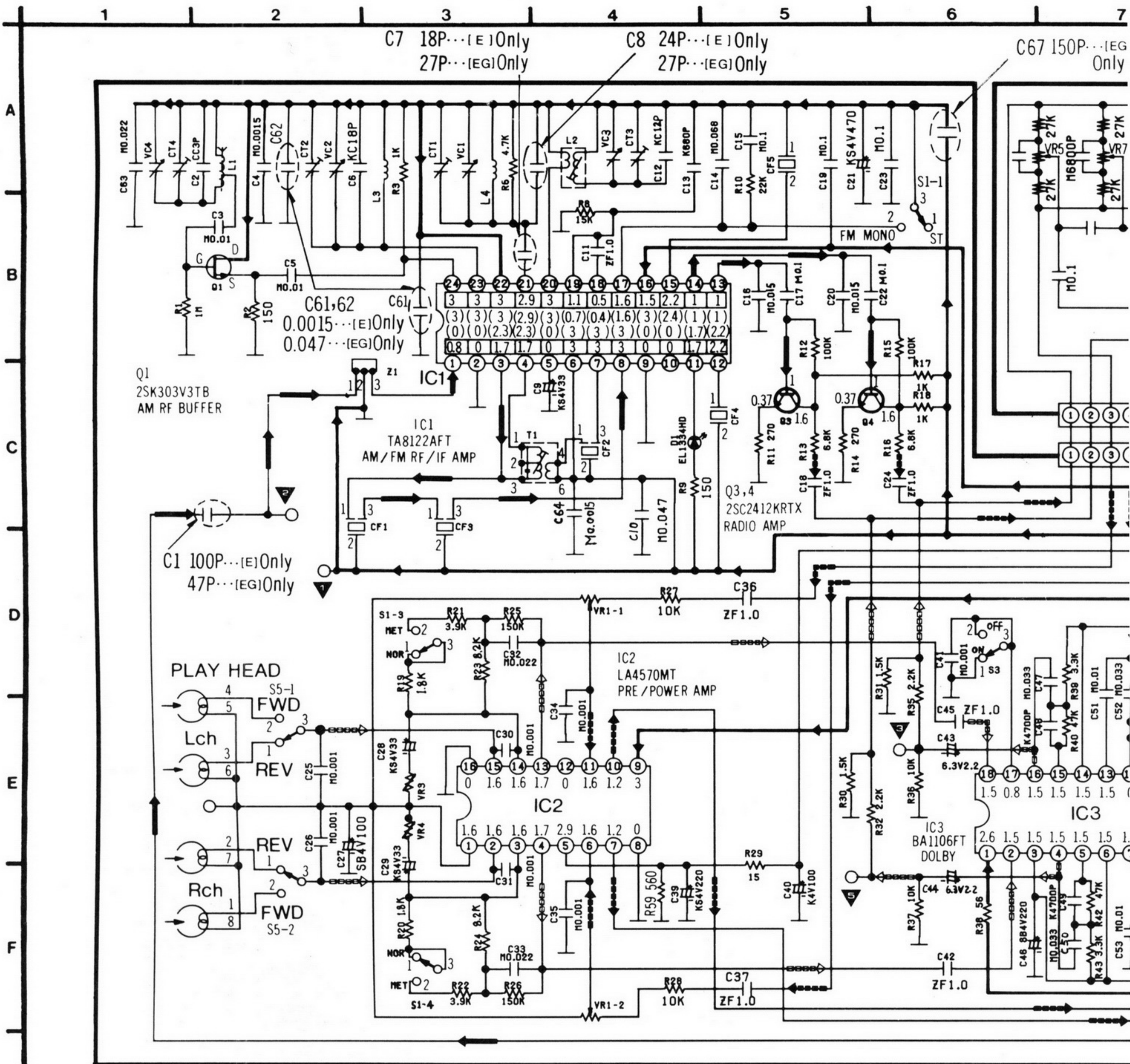
Track System: 4-track, 2-channel, stereo playback

Notes:

1. Weights and dimensions shown are approximate.
2. Design and specifications are subject to change without notice.

Panasonic

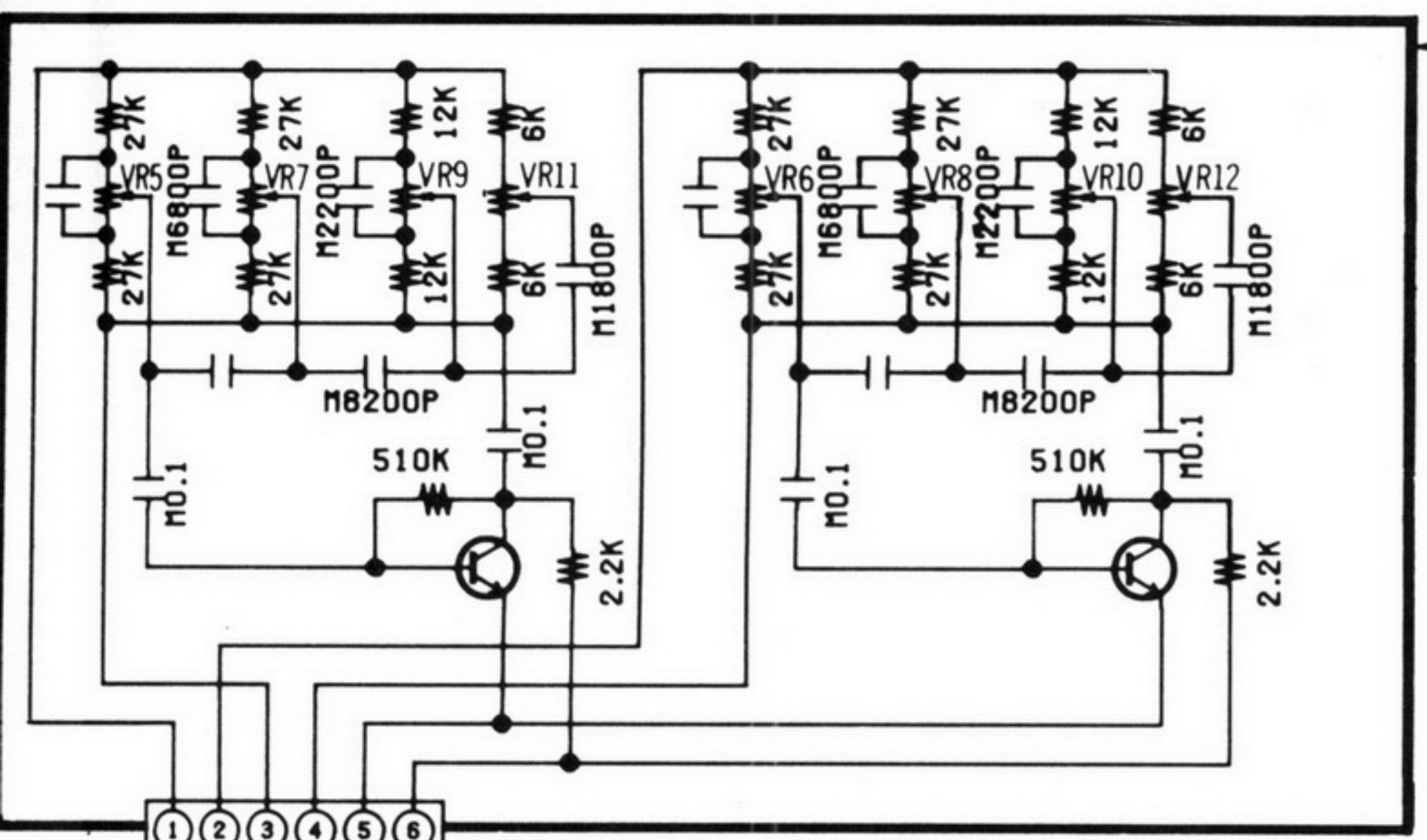
SCHEMATIC DIAGRAM



Notes:

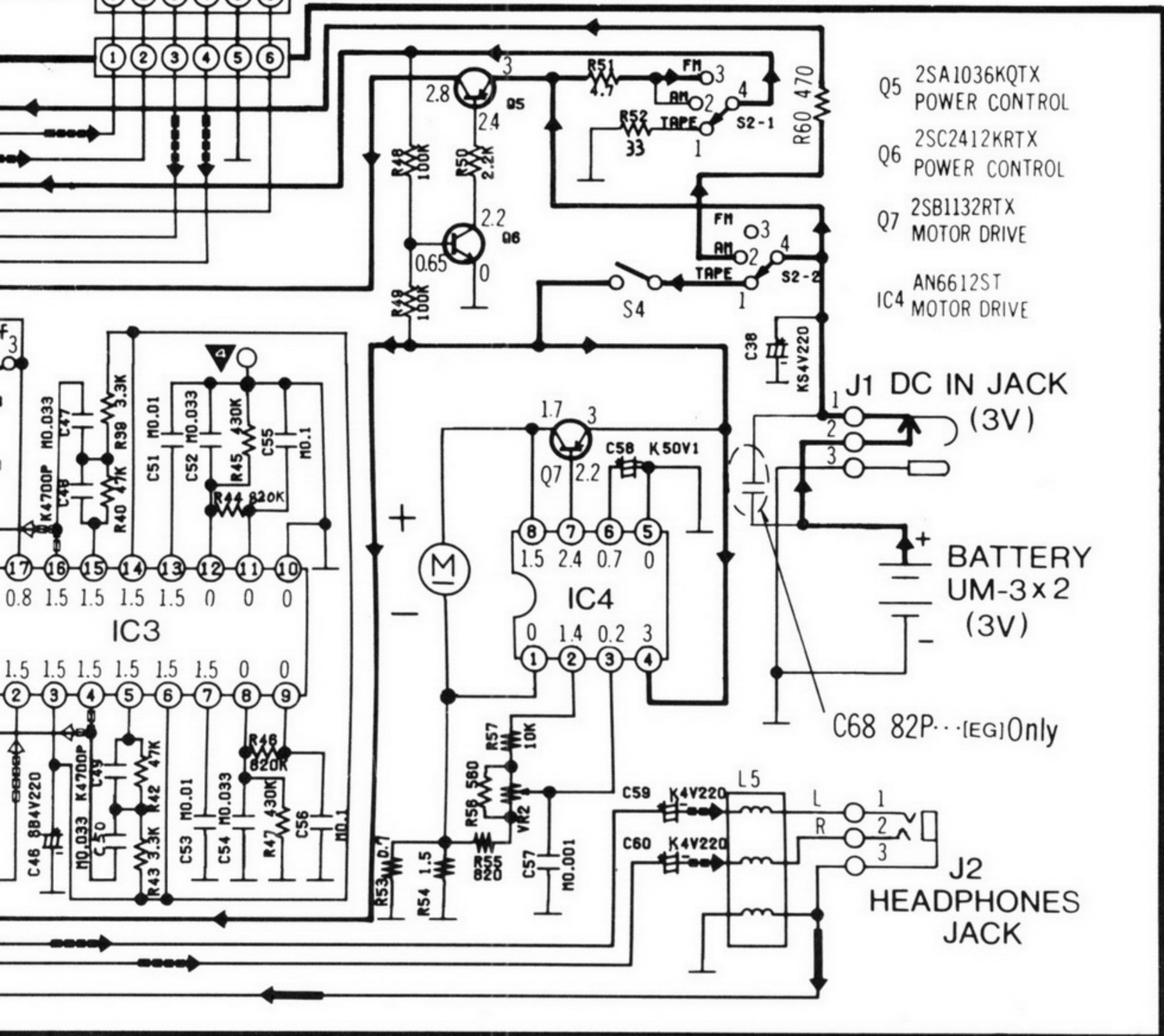
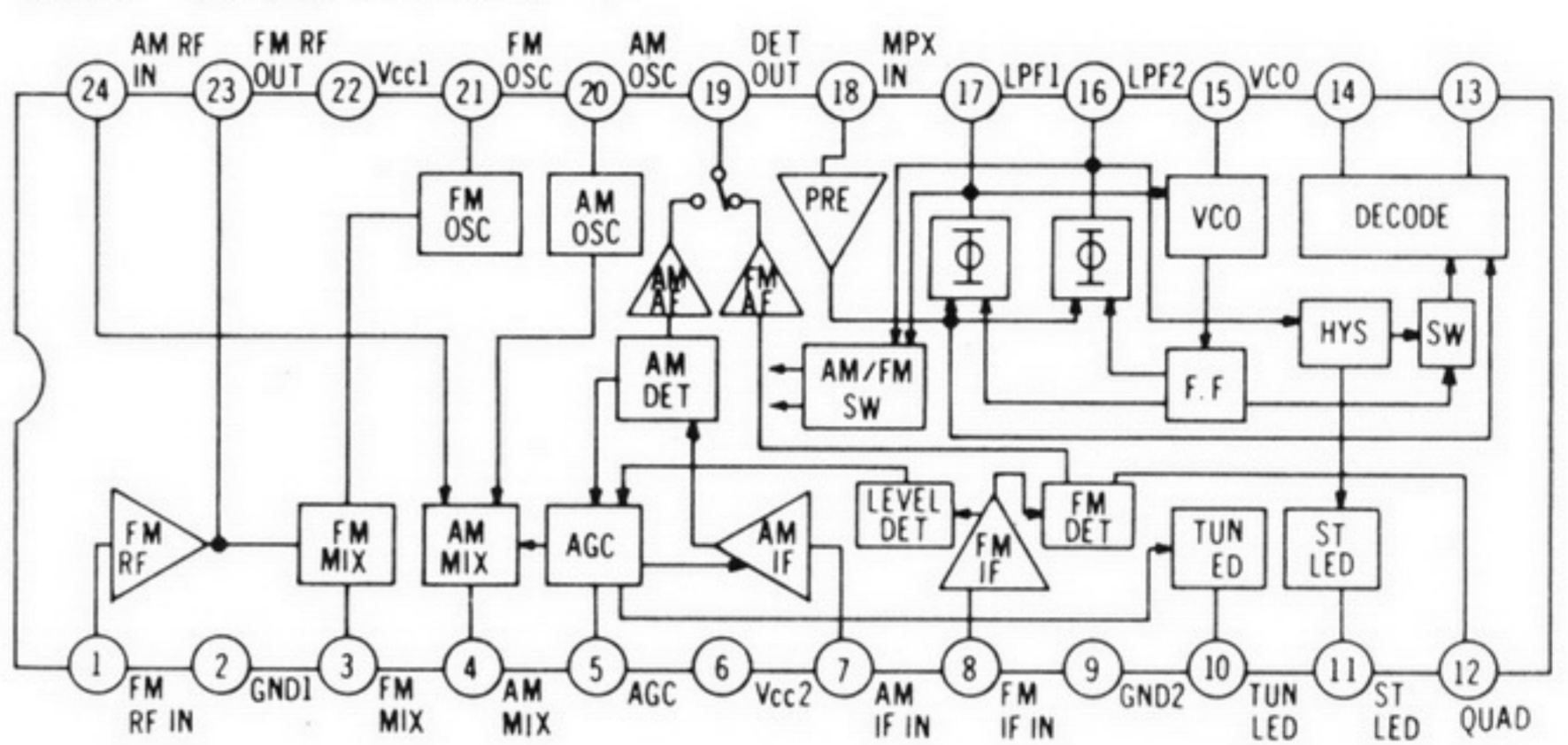
- S1-1, S1-3, : FM sensitivity/TAPE select switch in S1-4 "DX/NOR" position. (1...DX/NOR, 2...LOCAL/CrO₂ [MTL])
- S2-1 ~ S2-2 : Function switch in "TAPE" position. (1...TAPE, 2...AM, 3...FM)
- S3 : Dolby NR switch in "ON" position. (1...ON, 2...OFF)
- S4 : Motor switch in "OFF" position.
- S5-1, S5-2 : FWD/REV select switch in "REV" position. (1...REV, 2...FWD)
- VR1-1 : Volume control VR (Lch)
- VR1-2 : Volume control VR (Rch)
- VR2 : Tape speed adjustment.
- VR3 : Playback gain adjustment VR (Lch)
- VR4 : Playback gain adjustment VR (Rch)
- VR5~12 : Graphic Equalizer VR (XBS/330Hz/1kHz/10kHz)
- VR5,6 : XBS
- VR7,8 : 330Hz
- VR9,10 : 1kHz
- VR11,12 : 10kHz
- The mark (▼) shows test point e.g. ▼ = test point 1.
- DC voltage measurement are taken with electronics voltmeter from negative terminal of battery.
- ...FM position, () ...AM position.
- No mark ...Playback position.

C67 150P...[EG] Only

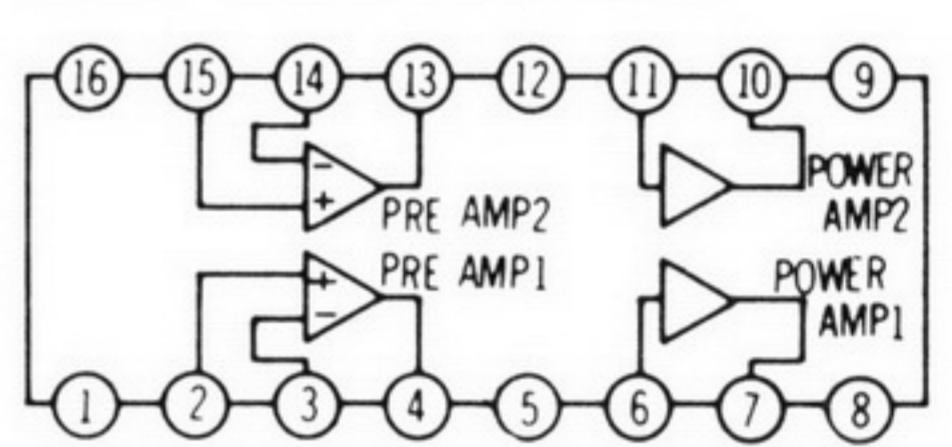


Notes:
 •The replacement part for the GRAPHIC EQ BLOCK is supplied only as part of an assembly.
 •It is not available individually.

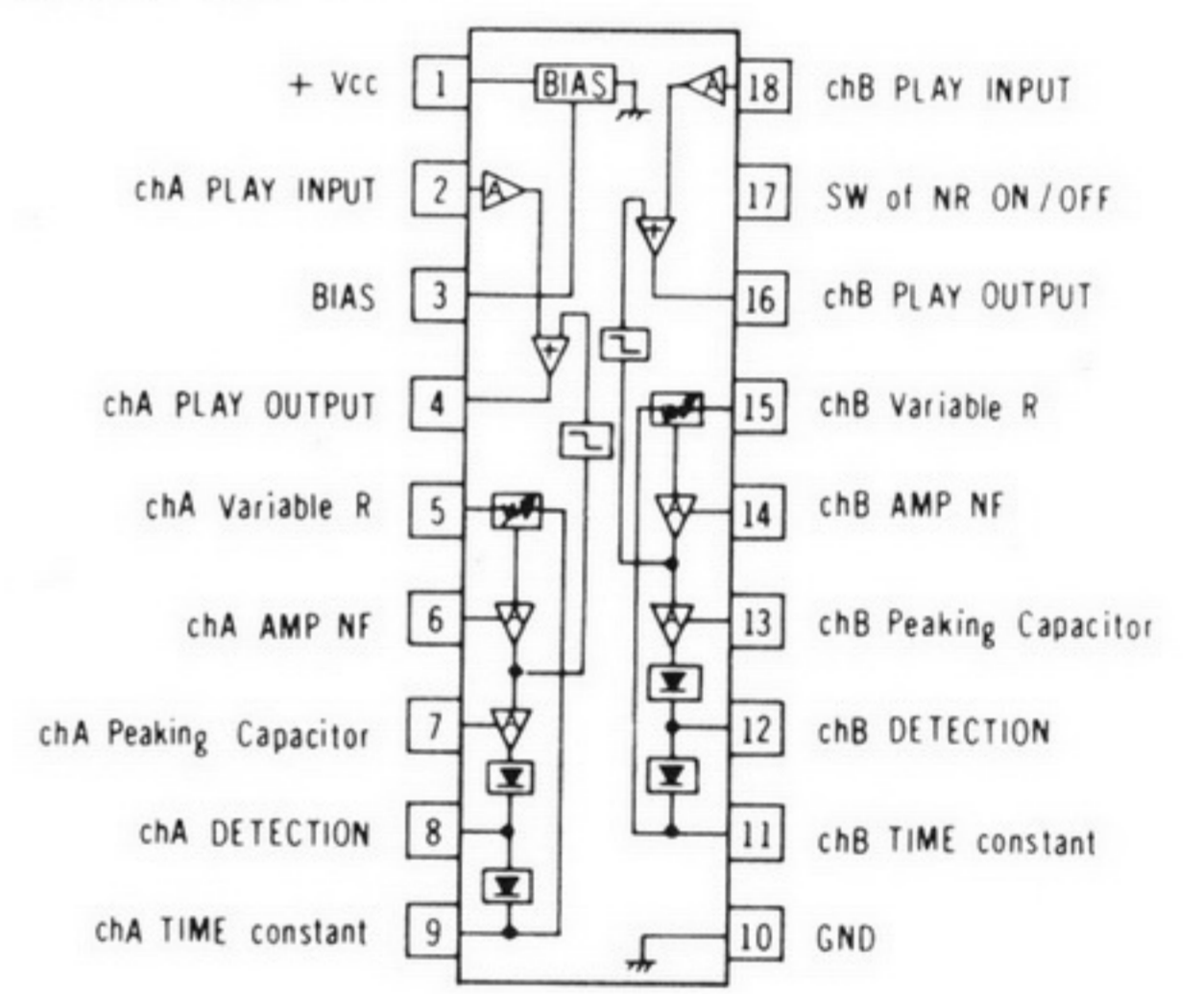
IC1 TA8122AFT



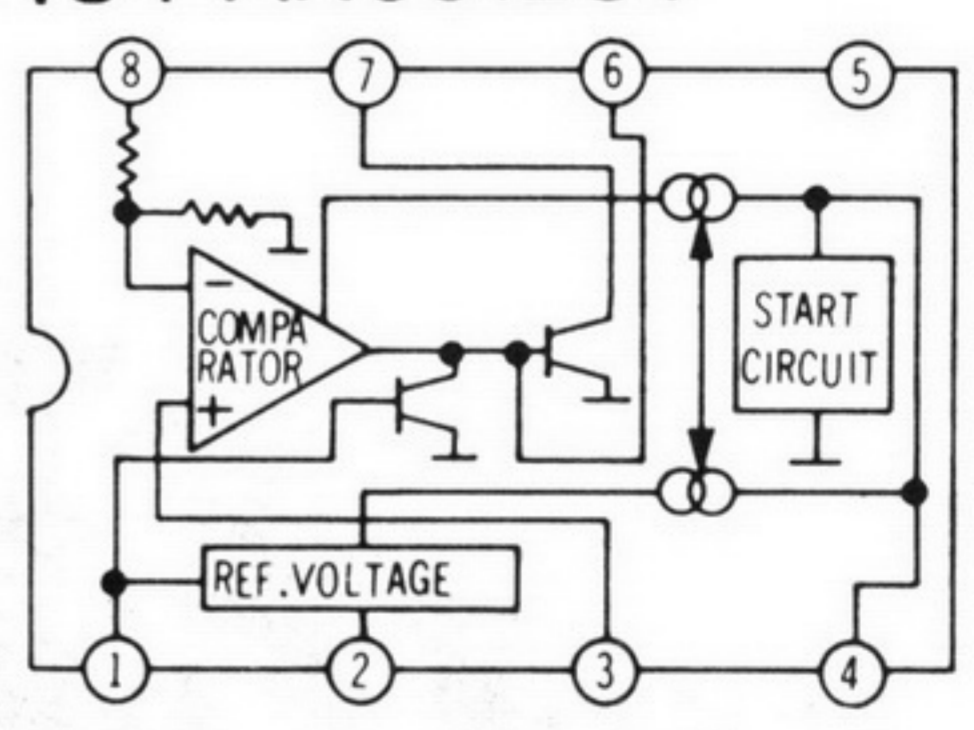
IC2 LA4570MT



IC3 BA1106FT



IC4 AN6612ST



- Battery current Volume minimum output (Radio)..... 27mA
- Volume maximum output (Radio)..... 40mA
- Volume minimum output (Tape)..... 160mA
- Volume maximum output (Tape)..... 180mA
- (Radio, 74dB 30% Modulation)
- (Tape, 315 Hz 0dB tape playback)

- ——— +B Voltage Line.
- □ □ □ □ Playback Signal.
- FM Signal.
- Playback and Radio Signal.

