

Service Manual

Radio Cassette

RQ-V85

Stereo Radio Cassette Player

Colour

(K)..... Black Type



Area

Suffix for Model No.	Areas	Colour
[EG]	Europe	(K)

■ SPECIFICATIONS

General:

Power Requirement: Battery; DC 3V
(two "AA" size, R6/LR6 batteries)
• Do not use rechargeable type batteries.

Power Output: 10mW (5mW × 2)···RMS (max.)
Output: Headphones; 30 Ω, ϕ 3.5
Dimensions: 114.2(W) × 85.6(H) × 37.5(D)mm
Weight: 166g without batteries

Tape Deck Section:

Frequency Response: 60~16,000Hz (Normal, HIGH/Metal)
Tape Speed: 4.8cm/s
Program Time: 1 hour with C-60 cassette tape
Track System: 4-track, 2-channel stereo playback

Notes:

1. Weights and dimensions shown are approximate.
2. Design and specifications are subject to change without notice.

Radio Section:

Radio Frequency Range: FM; 87.5~108MHz
(0.05MHz step)
AM; 522~1629kHz(9kHz step)
Intermediate Frequency: FM; 10.7MHz
AM; 459kHz
Sensitivity: FM; 5.62μV/0.1mW output
(-3dB Limit, Sens)
AM; 316.2μV/m/0.1mW output

⚠ WARNING

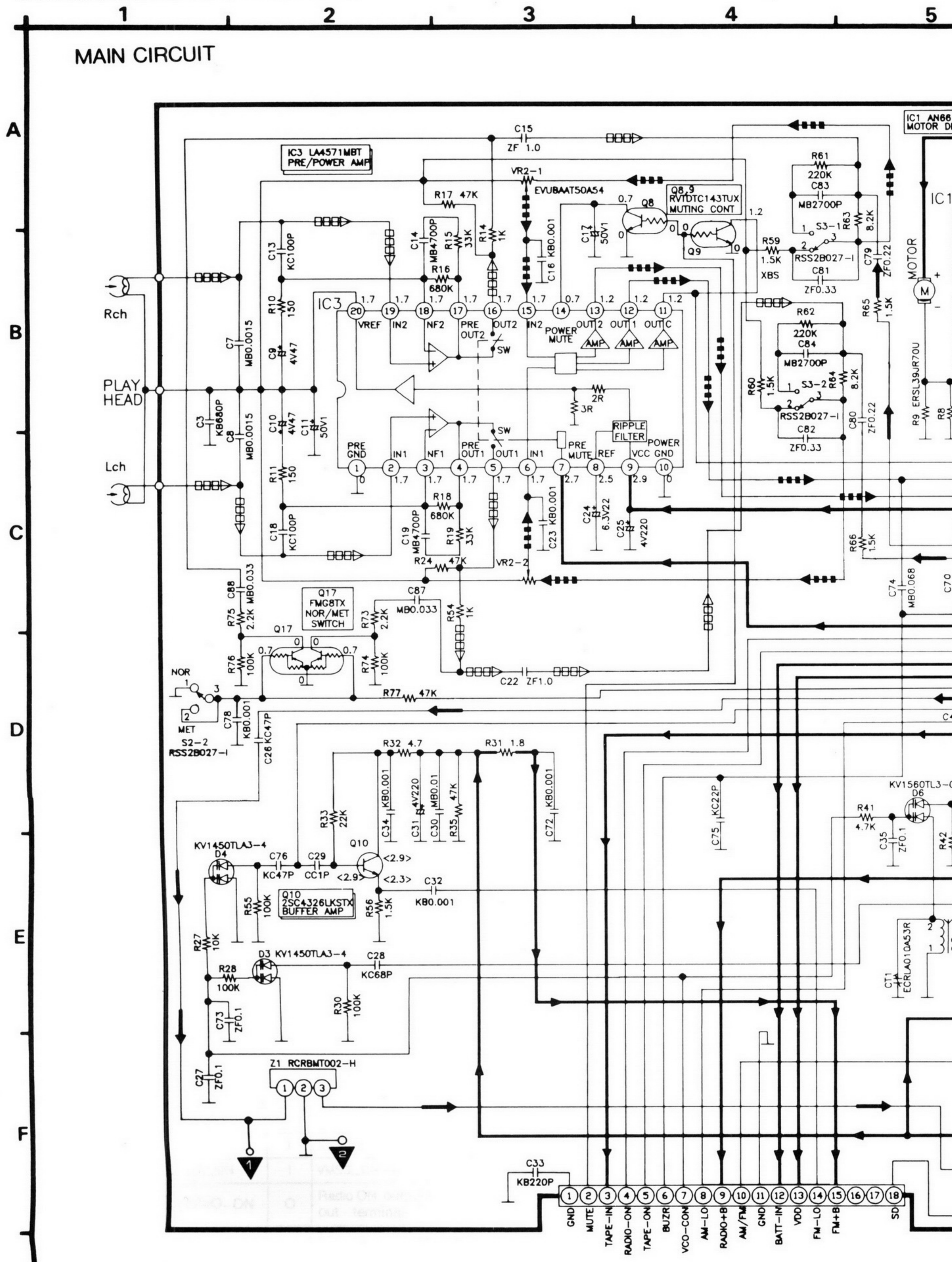
This service information is designed for experienced repair technicians only and is not designed for use by the general public. It does not contain warnings or cautions to advise non-technical individuals of potential dangers in attempting to service a product. Products powered by electricity should be serviced or repaired only by experienced professional technicians. Any attempt to service or repair the product or products dealt with in this service information by anyone else could result in serious injury or death.

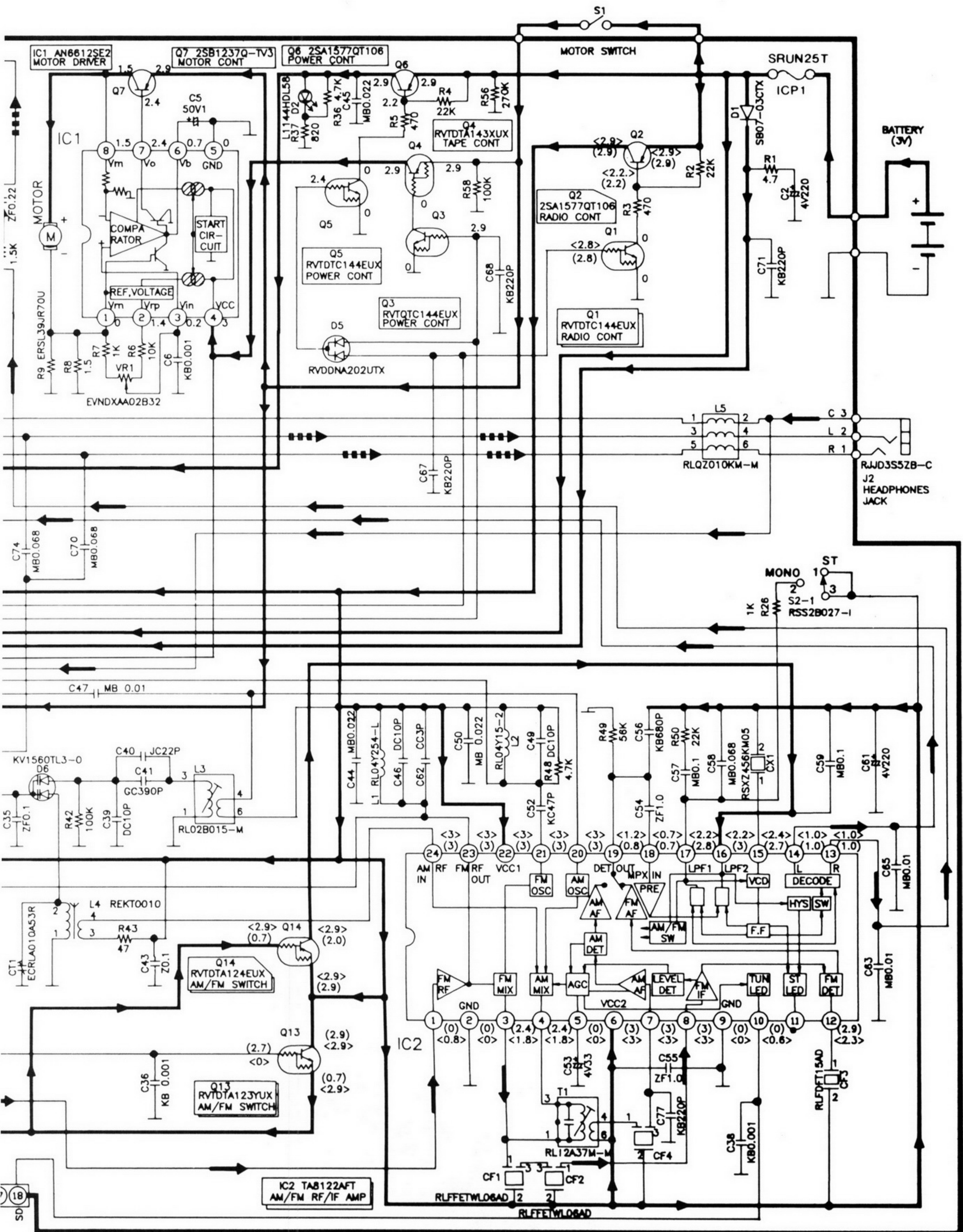
Panasonic®

© 1997 Matsushita Electric Industrial Co., Ltd.
All rights reserved. Unauthorized copying and distribution is a violation of law.

SCHEMATIC DIAGRAM

MAIN CIRCUIT

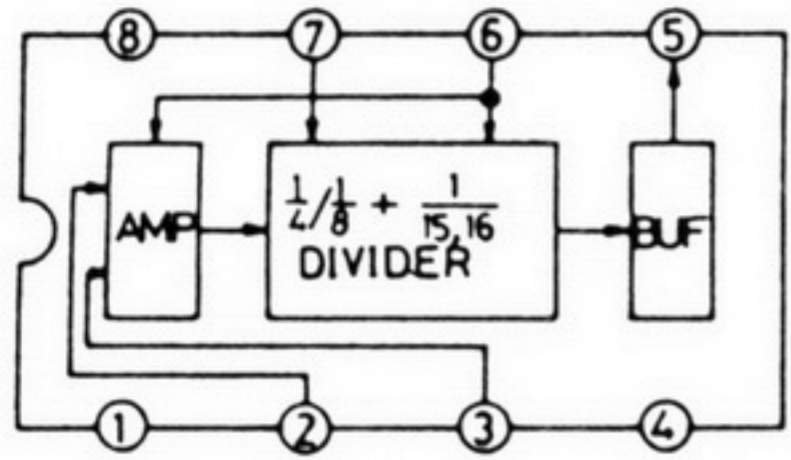




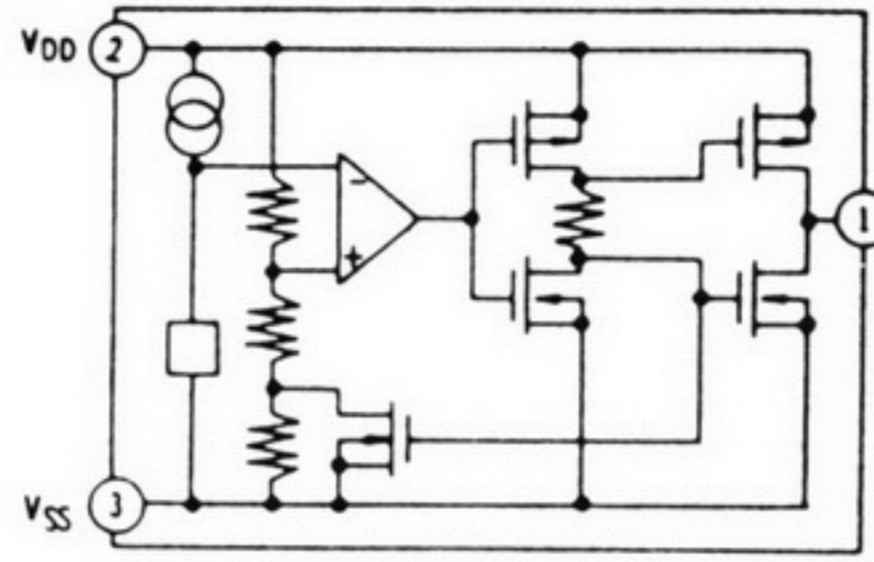
SCHEMATIC DIAGRAM

LCD CIRCUIT

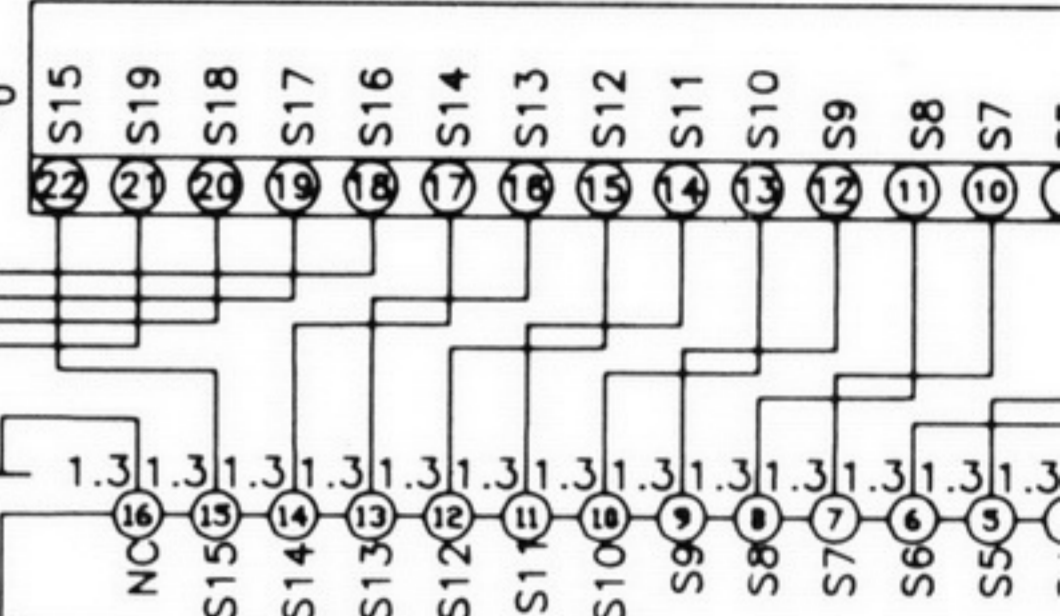
IC202 TD6134AFT



IC203 S80719SLAGT1



LCD201 RSL5178-P



IC201 TC9316FB085 MICRO COMPUTER

A

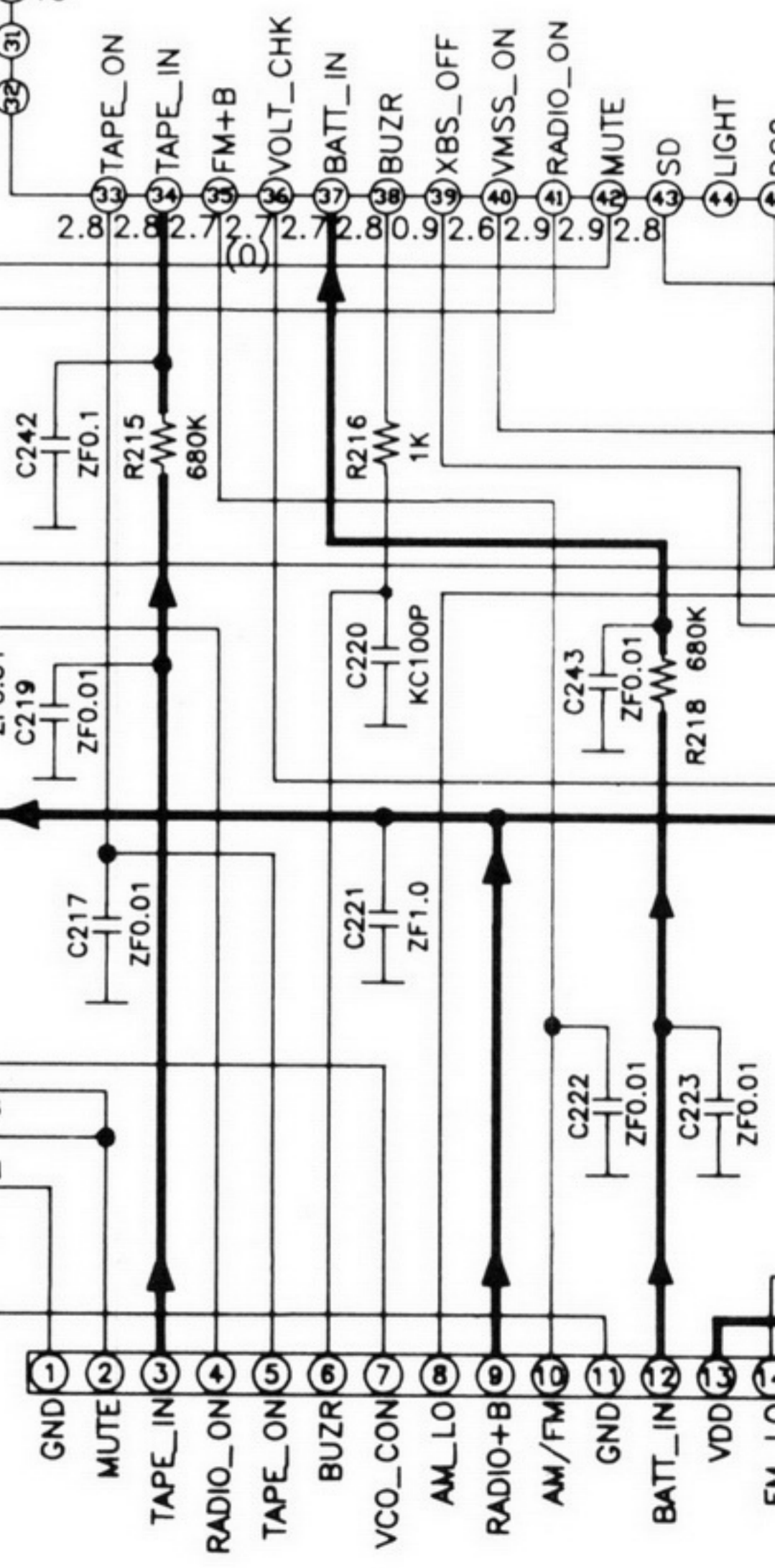
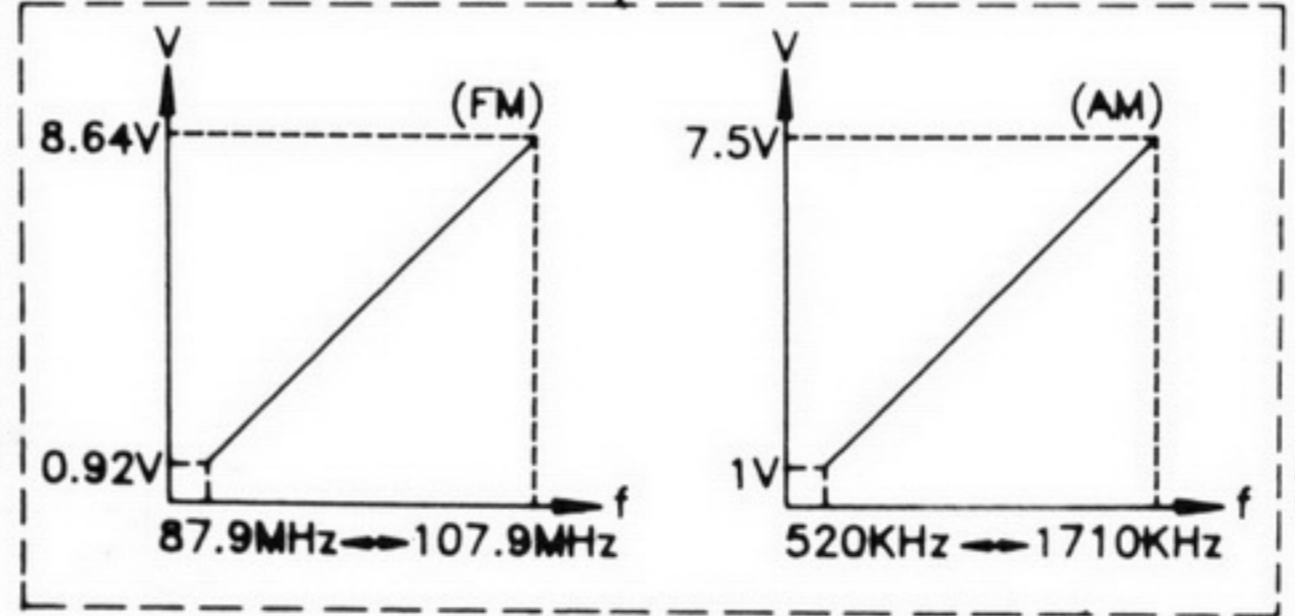
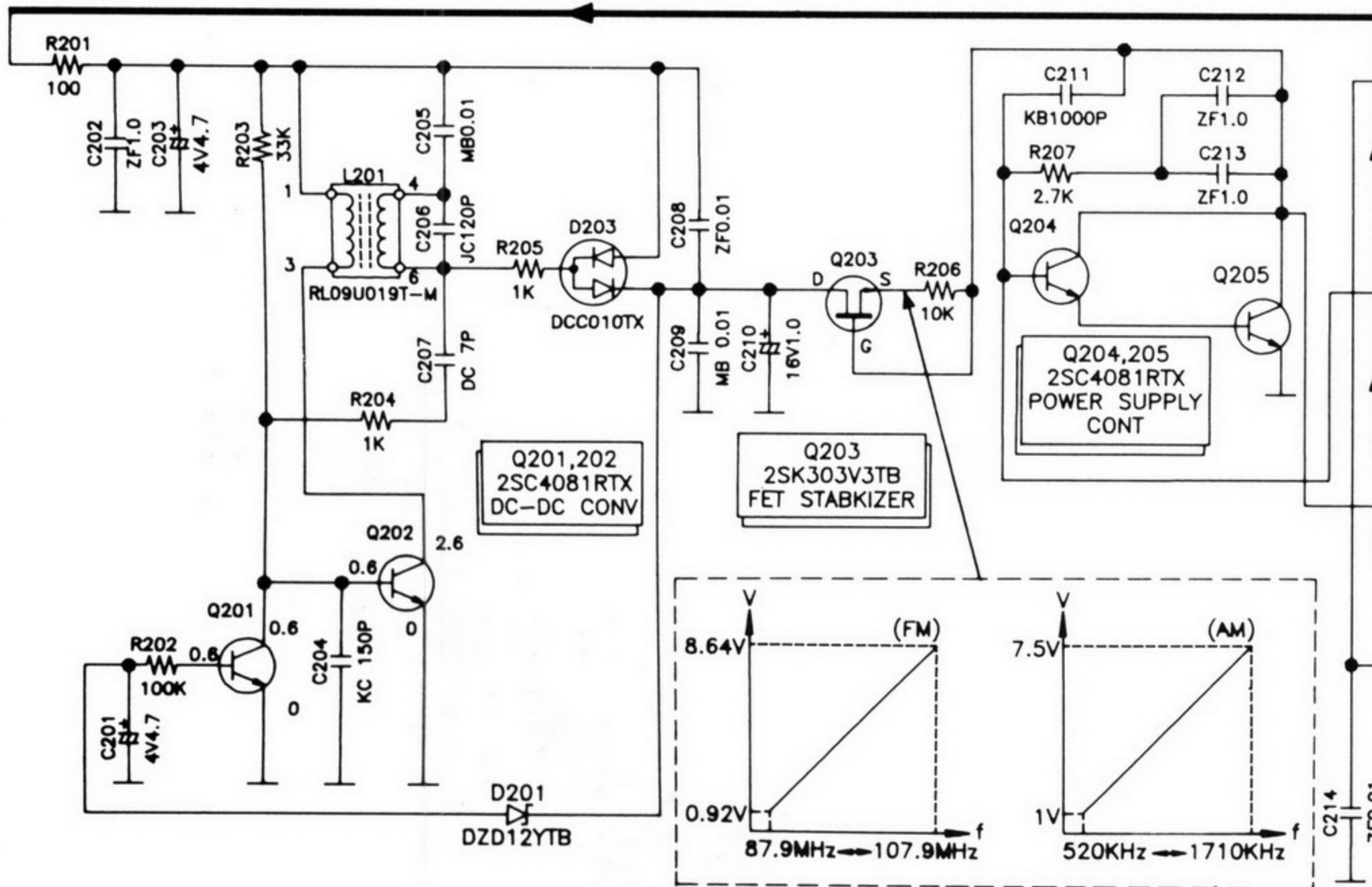
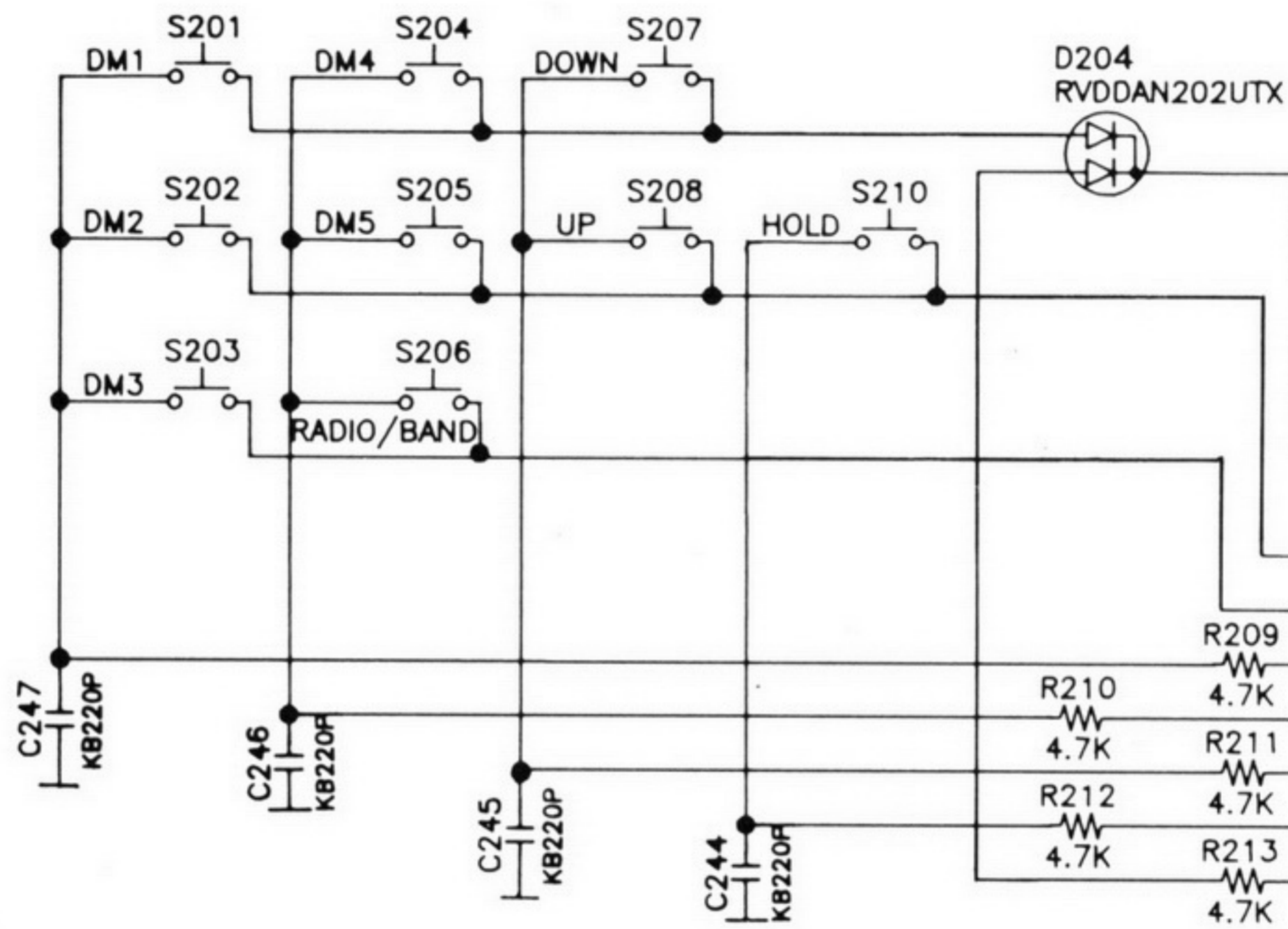
B

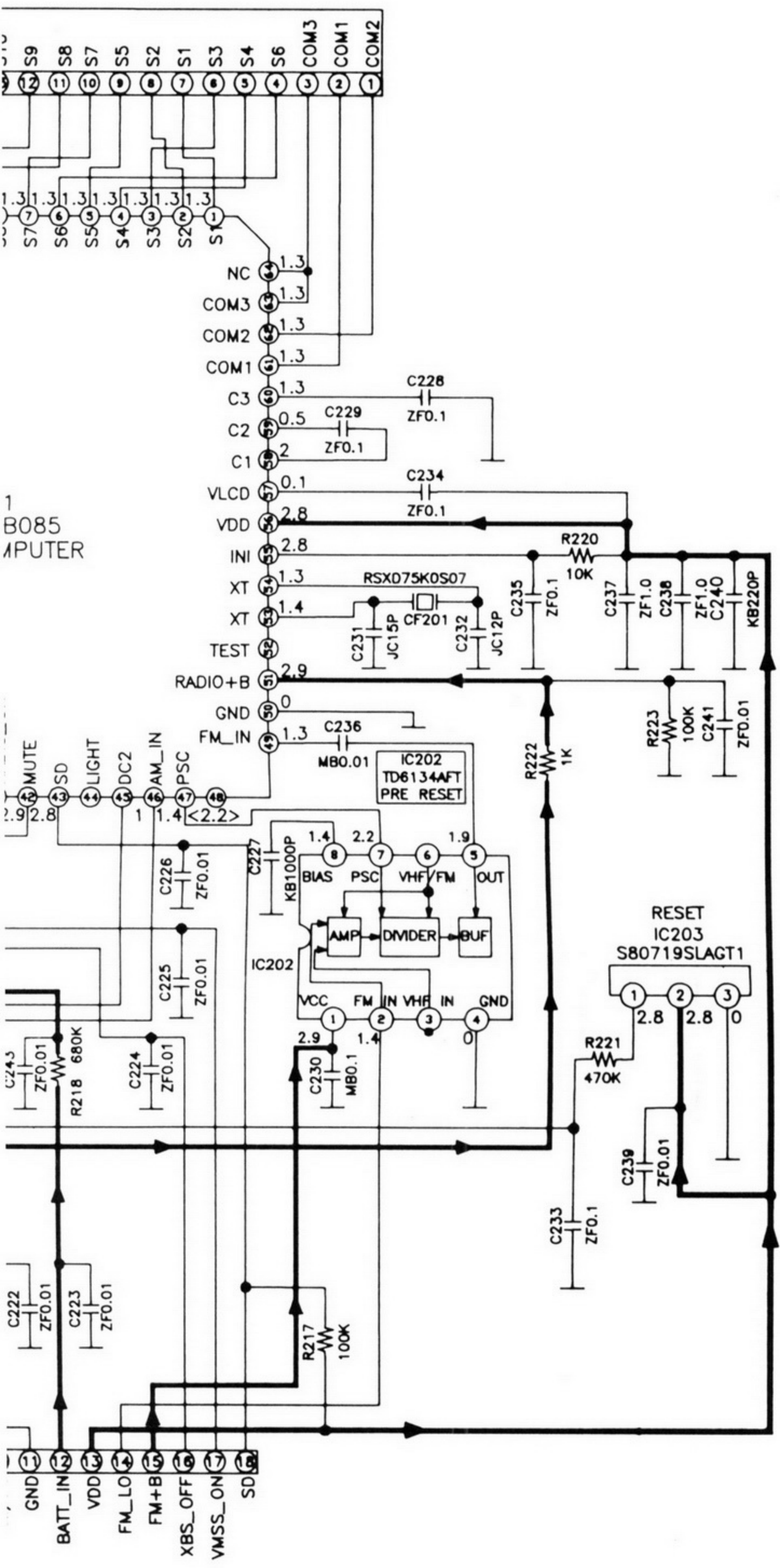
C

D

E

F





Notes:

- S1: Motor switch in "OFF" position.
 - S2-1: FM mode switch in "ST" position.
(1...ST, 2...MONO)
 - S2-2: Tape selector switch in "NOR" position,
(1...NOR, 2...CrO₂/MET)
 - S3-1, 3-2: XBS switch in "ON" position.
(1...ON, 2...OFF)
 - S5-1, 5-2: FWD/REV select switch in "REV" position.
(1...FWD, 2...REV)
 - S201-205: Direct tuning switches.
[S201: 1, S202: 2, S203: 3, S204: 4, S205: 5]
 - S206: Radio/ Band/Mode select (-MODE/•AM/FM/OFF) switch in "OFF" position.
 - S207: Tuning down switch in "OFF" position.
 - S208: Tuning up switch in "OFF" position.
 - S210: Hold switch in "OFF" position
 - VR1: Tape speed adjustment VR.
 - VR2-1: Volume control VR (Rch).
 - VR2-2: Volume control VR (Lch).
 - The mark (▼) shows test point e.g. ▼ = test point 1.
 - DC voltage measurement are taken with electronics voltmeter from negative terminal of battery.
< >...FM position, ()...AM position.
No mark...Playback position
 - Battery current: Volume minimum output (Radio)..... 60mA
Volume minimum output (Tape)..... 130mA
Volume Maximum output (Radio)..... 75mA
Volume Maximum output (Tape).....175mA
(Radio, 74dB 30% Modulation.)
(Tape, 315Hz 0dB tape playback)
- +B Voltage Line.
 Playback Signal.
 FM Signal.
 Playback and Radio Signal.
- This schematic diagram may be modified at any time with the development of new technology.