

Service Manual

Radio Cassette RX-C60LS

Portable Component System with 4 Band Radio



■ SPECIFICATIONS

General:

Power Requirement: AC; 110~115/115~127/200~220/
230~250 V, 50/60 Hz
Battery; 12 V (Eight "D" Size Flashlight
Batteries)
(National UM-1 or equivalent)
Car battery; with optional car
adaptor RP-952

Power Consumption: 35 W (AC only)

Power Output: 15 W (7.5 W×2) . . . RMS (max.)
20 W (10 W×2) . . . MPO

Speaker: Woofer; 10 cm (4") PM Dynamic
Speaker (3Ω)
Tweeter; 3 cm (1³/₁₆") Ceramic Speaker
(200Ω)

Input: MIC; sensitivity 0.26 mV/applicable
microphone impedance 200~600Ω
MIX MIC: sensitivity 0.8 mV/200~600Ω
PHONO: sensitivity 2.5 mV/47 kΩ over
DC IN; 13.2 V

Output: Ext SP; 3~8Ω
Headphones; 0.6 mW, 8Ω

REC/PB Connection: 5P DIN type IN; 3 mV/10 kΩ over
OUT; 420 mV/4.7 kΩ under

Dimensions: Total Size
530 (W)×172 (H)×176 (D) mm
(20⁷/₈"×6²⁵/₃₂"×6¹⁵/₁₆")
Main Unit
298 (W)×172 (H)×176 (D) mm
(11²³/₃₂"×6²⁵/₃₂"×6¹⁵/₁₆")

Speaker Box

118 (W)×172 (H)×157 (D) mm
(4⁵/₈"×6²⁹/₃₂"×6³/₁₆")
6.0 kg (13 lb. 3.6 oz.) without batteries

Weight:

Radio Section:

Radio Frequency

Range:

FM; 87.5~108 MHz
LW; 150~285 kHz (2000~1060 m)
MW; 520~1610 kHz (577~186 m)
SW; 5.9~18 MHz (50.8~16.7 m)

Intermediate Frequency:

FM; 10.7 MHz
AM (LW/MW/SW); 455 kHz

Sensitivity:

FM; 2μV/500 mW output
LW; 224μV/m/50 mW output
MW; 112μV/m/50 mW output
SW; 12μV/50 mW output

Tape Deck Section:

Frequency Response:

40~12,000 Hz (with normal tape)
40~14,000 Hz (with CrO₂ tape)
40~16,000 Hz (with Metal tape)

Recording system:

AC bias, AC erase

Tape Speed:

4.8 cm/s, (1⁷/₈ ips)

Wow and Flutter:

0.055% (WRMS)

Program Time:

1 hour with C-60 cassette tape

Track System:

4-track 2 channel stereo recording and
playback

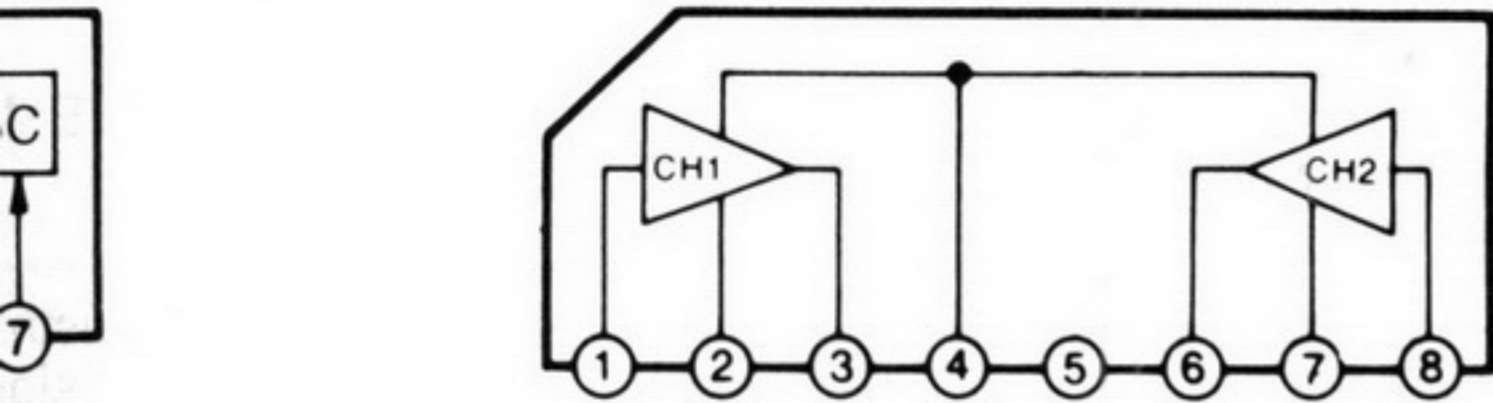
Specifications are subject to change without notice.

Panasonic

Matsushita Electric Trading Co., Ltd.

P.O. Box 288, Central Osaka Japan

IC302 RVIBA328



IC304 RVILA4505

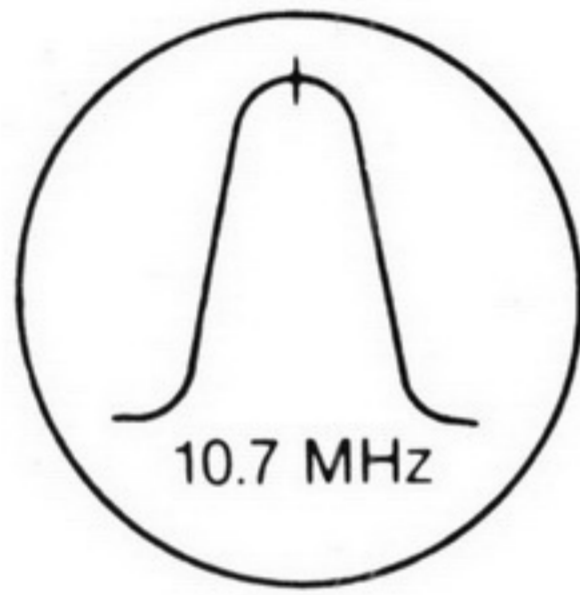
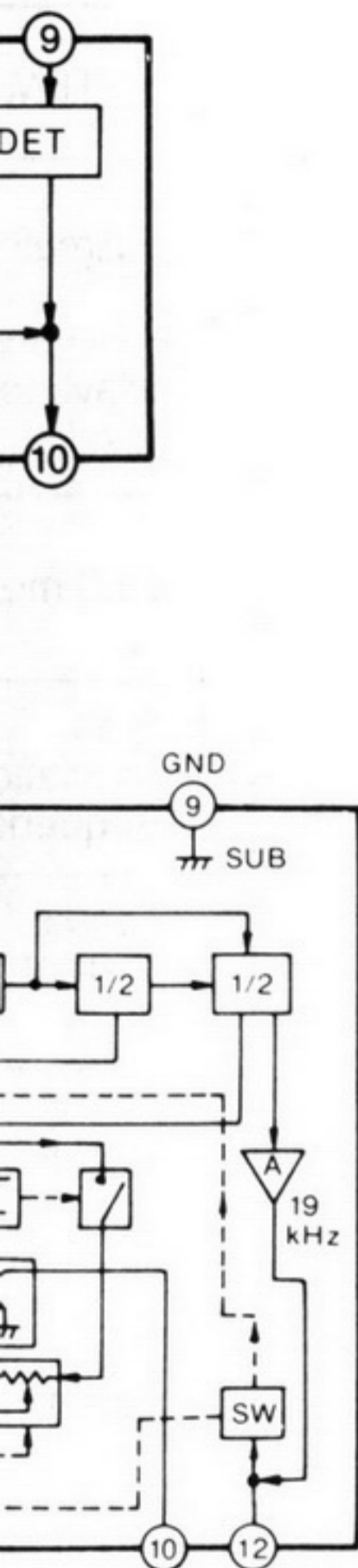
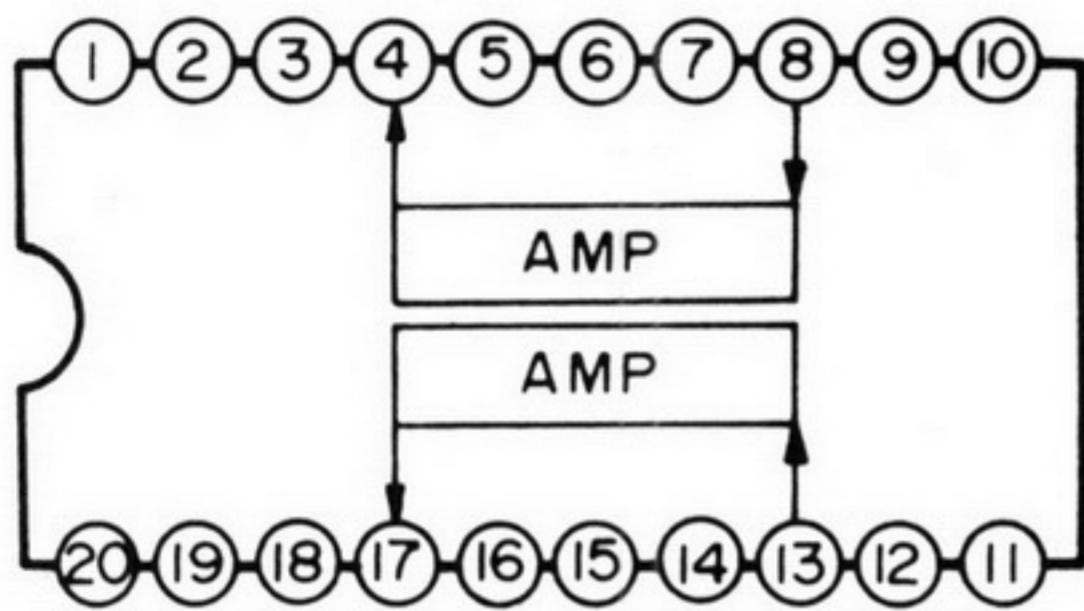


Fig. 20

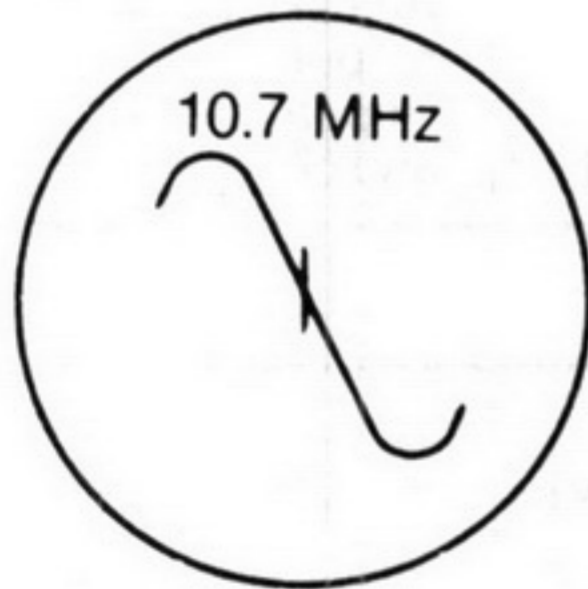
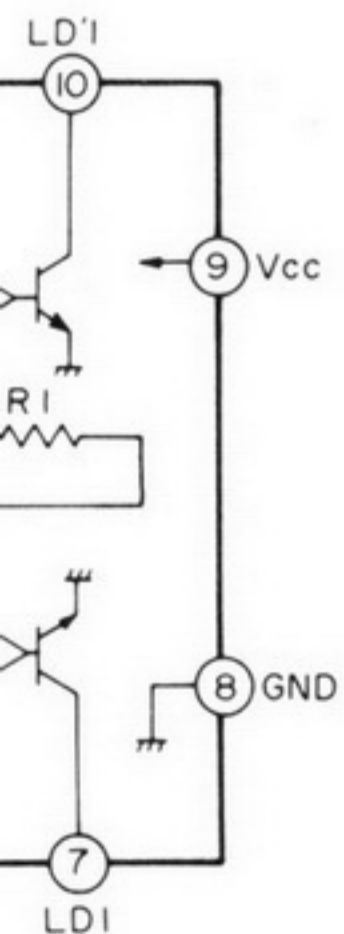
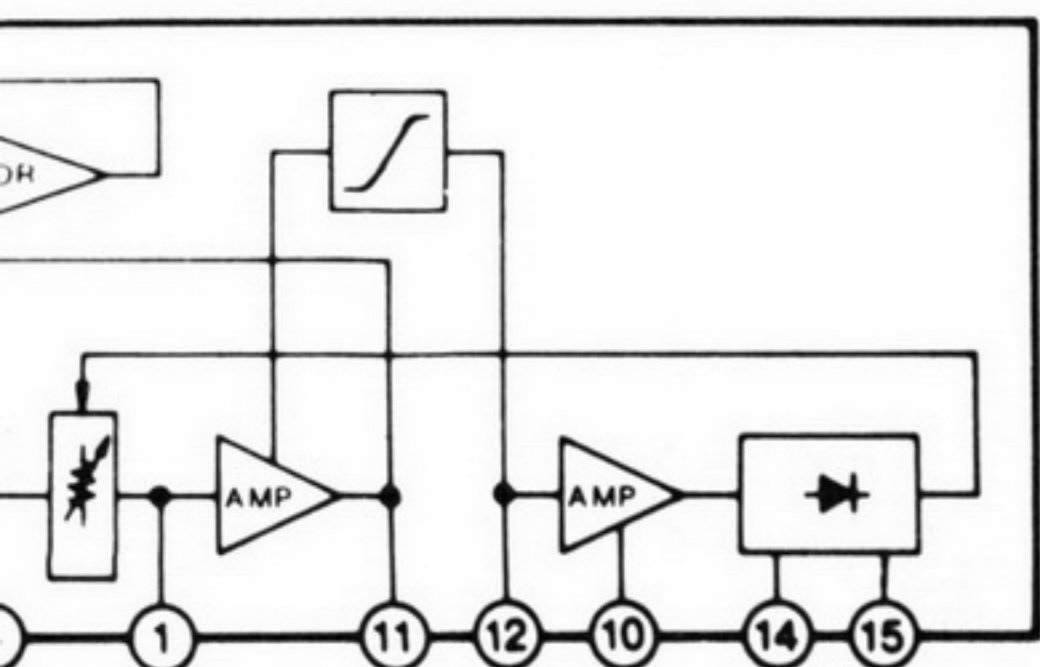


Fig. 21



RVINE649N



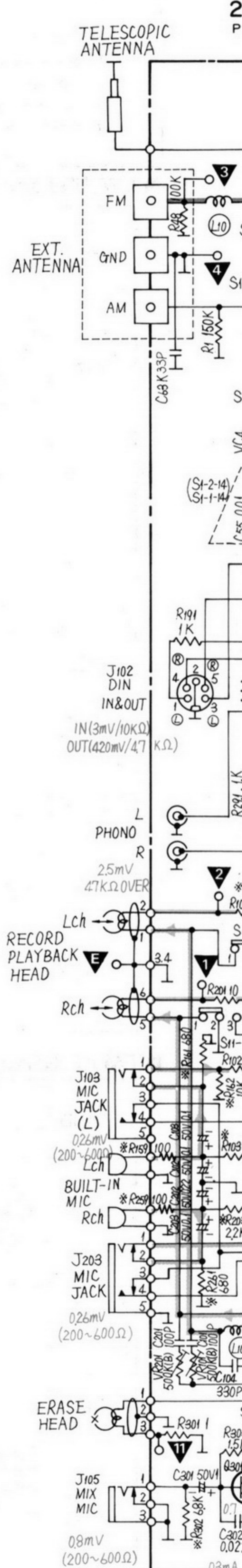
<p>IC1</p>	<p>IC304</p>
<p>IC2</p>	<p>Q1~3, 101~106, 111, 201~206, 210, 211, 301, 303~307, 310</p>
<p>IC3</p>	<p>Q308</p>
<p>IC71</p>	<p>Anode Cathode</p> <p>D1~3, 101~103, 201~203, 301~303, 306~308, 314</p>
<p>IC101, 201</p>	<p>Anode Cathode</p> <p>D309~313</p>
<p>IC302</p>	

- + ⊕ Voltage Line
- Tape (PLAY BACK) Signal Line
- Radio (FM) Signal Line
- Tape (RECORD) Signal Line

BIAS VOLTAGE
 1.9±0.2 mV (Normal)
 2.7±0.3 mV (CrO₂)
 4±0.3 mV (Metal)

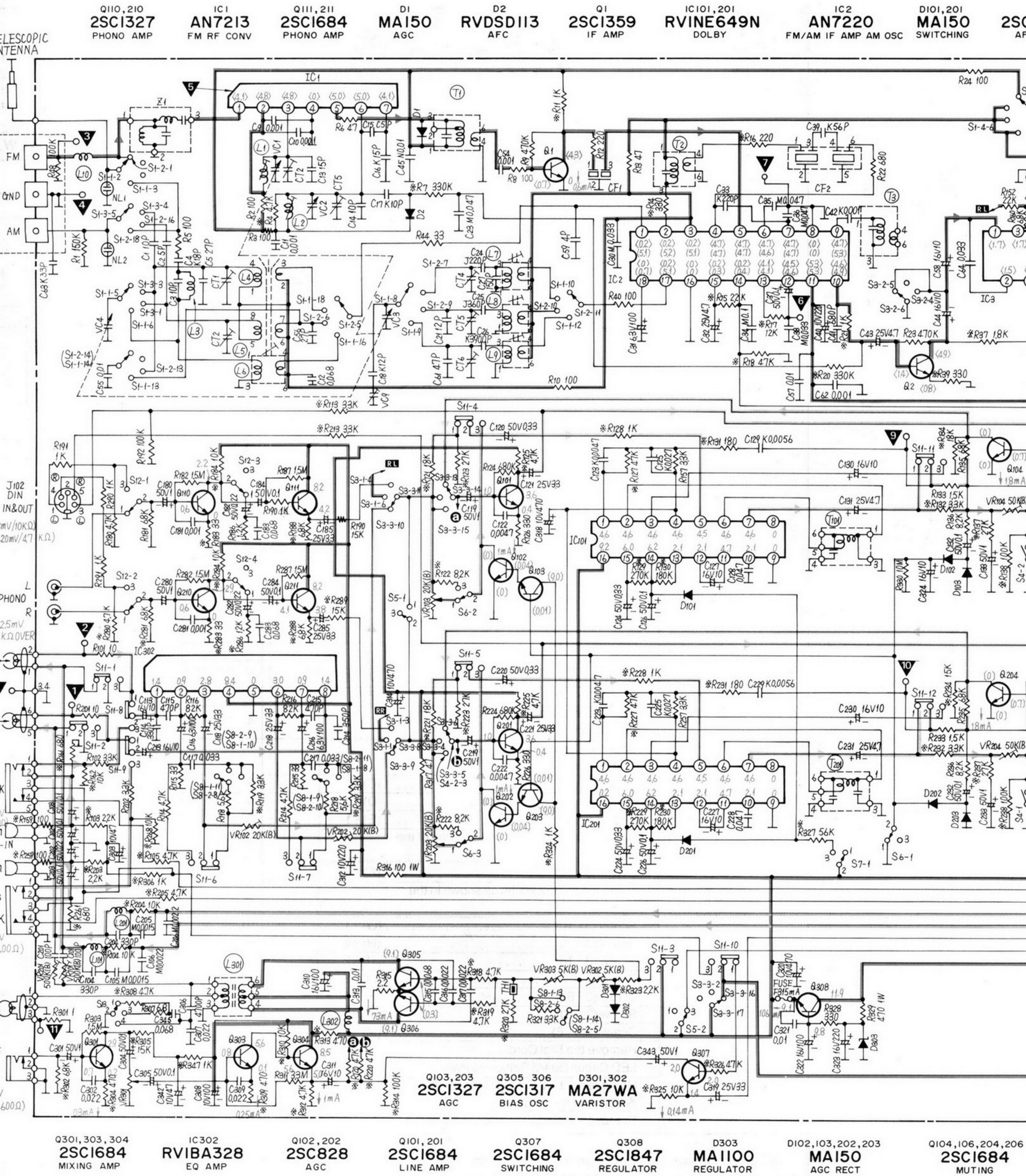
OVERALL FREQUENCY RESPONSE

Metal	100 Hz 0±3 dB 1 kHz 0 dB 10 kHz -1±5 dB
CrO ₂	100 Hz 1±3 dB 1 kHz 0 dB 10 kHz -1±5 dB
Normal	100 Hz 1±3 dB 1 kHz 0 dB 10 kHz 1±5 dB



Q301, 302
 2SC1000
 MIXING

SCHEMATIC DIAGRAM MODEL RX-C60LS



RX-C60LS

Q2 CI684 F AMP
IC3 RV1A1356 FM MPX
D3 MA1051 AOC
Q3 2SC1327 TUNING AMP
Q4 2SA564 TUNING AMP

