

# Service Manual

Portable Stereo CD System

Radio Cassette

**COMPACT**  
**disc**  
**DIGITAL AUDIO**

**MASH\***  
multi-stage noise shaping

## RX-DS15



Colour

(K) . . . Black Type  
(W) . . . White Type

Area

Suffix for Model No.	Area	Colour
(E)	Europe	(K, W)
(EB)	Great Britain	(K)
(EG)	Germany and Italy	

\* MASH is a trademark of NTT.

**TAPE DECK : SG-20 MECHANISM SERIES**  
**TRAVERSE DECK : RAE0113Z MECHANISM SERIES**

## ■ SPECIFICATIONS

### ■ Radio

<b>Frequency range</b>	
FM	87.5 – 108 MHz
LW	148.5 – 285 kHz
MW	520 – 1610 kHz
<b>Intermediate frequency</b>	
FM	10.7 MHz
AM	459 kHz
<b>Sensitivity</b>	
FM	11.5 dB/50 mW (– 3 dB limit sens.)
LW	58 dB/m/50mW
MW	52 dB/m/50mW

### ■ CD Player

<b>Sampling frequency</b>	44.1 kHz
<b>Decoding</b>	16 bit linear
<b>Beam source</b>	Semiconductor laser (wavelength 780nm)
<b>No. of channels</b>	2 channel, stereo
<b>Wow and flutter</b>	Less than possible measurement data
<b>D/A converter</b>	MASH (1 bit DAC)

### ■ Tape Recorder

<b>Track system</b>	4 track, 2 channel, stereo
<b>Recording system</b>	AC bias
<b>Erasing system</b>	Multi pole magnet
<b>Monitor system</b>	Variable sound monitor
<b>Frequency range</b>	
Normal	50 – 14000 Hz

### ■ General

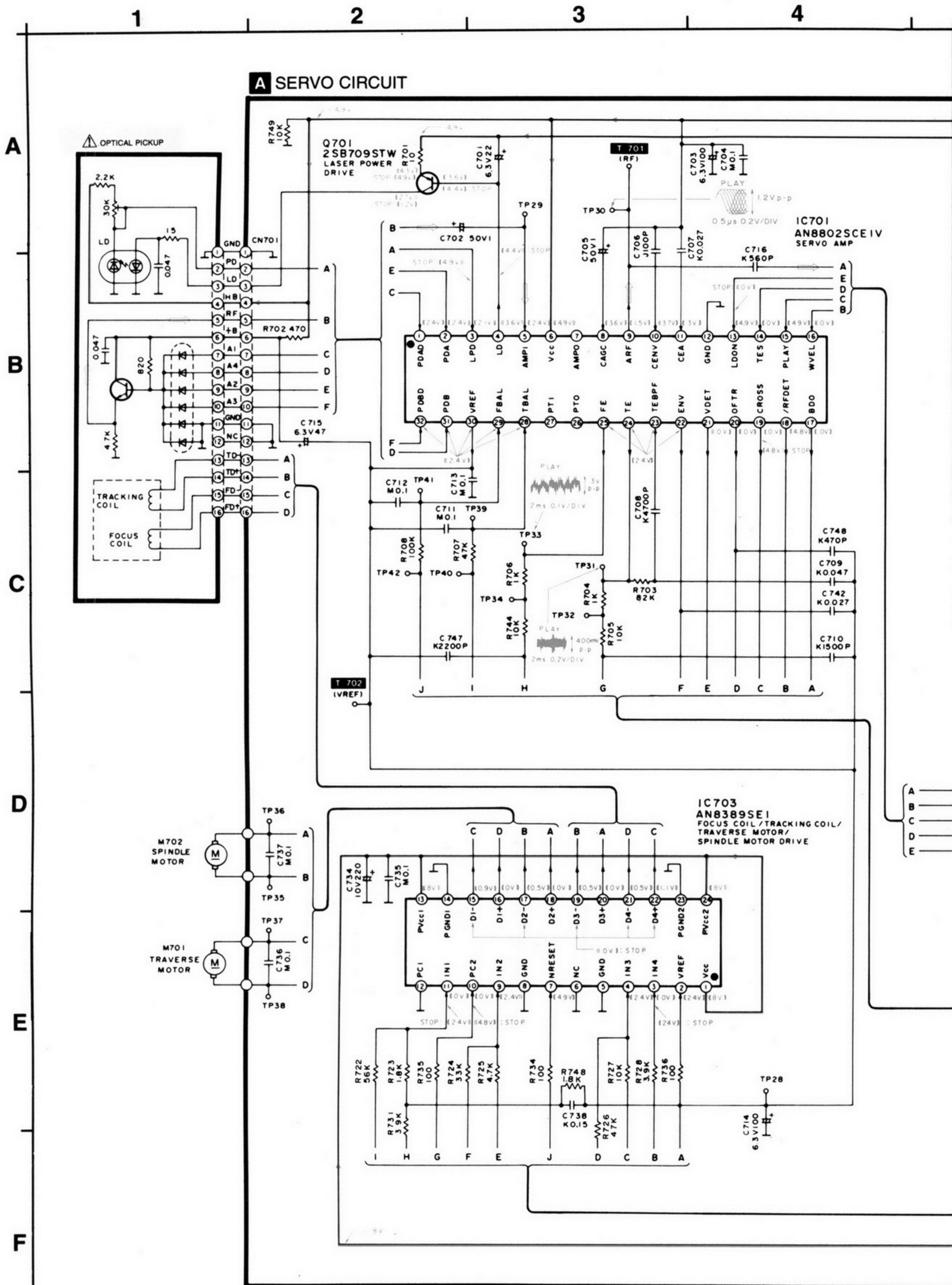
<b>Power requirement</b>	
AC	230 – 240V, 50Hz Power consumption; 40W
<b>Battery</b>	12V (8 R20/LR20, UM-1 batteries)
<b>Speakers</b>	10 cm x 2
<b>Jacks</b>	
<b>Input</b>	MIC: 5 mV/(200 – 600Ω)
<b>Output</b>	Headphones: 32Ω
<b>Dimensions (W x H x D)</b>	489 x 170 x 252mm
<b>Weight</b>	3.7 kg without batteries

#### Note :

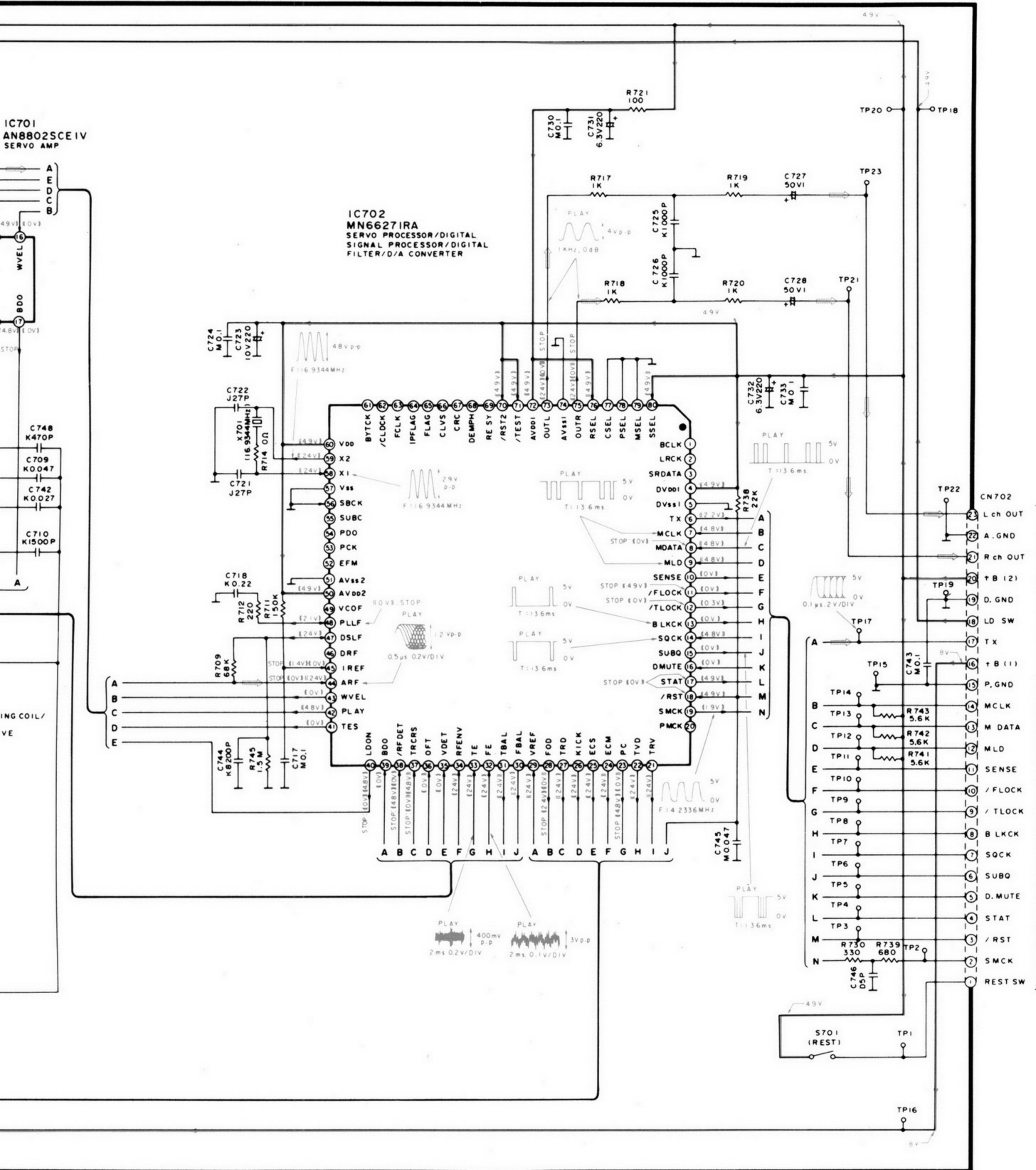
Specifications are subject to change without notice  
Weight and dimensions are approximate.

# Panasonic

# SCHEMATIC DIAGRAM



4 5 6 7 8 9



CONNECTOR CIRCUIT (CN702) (Page 14)

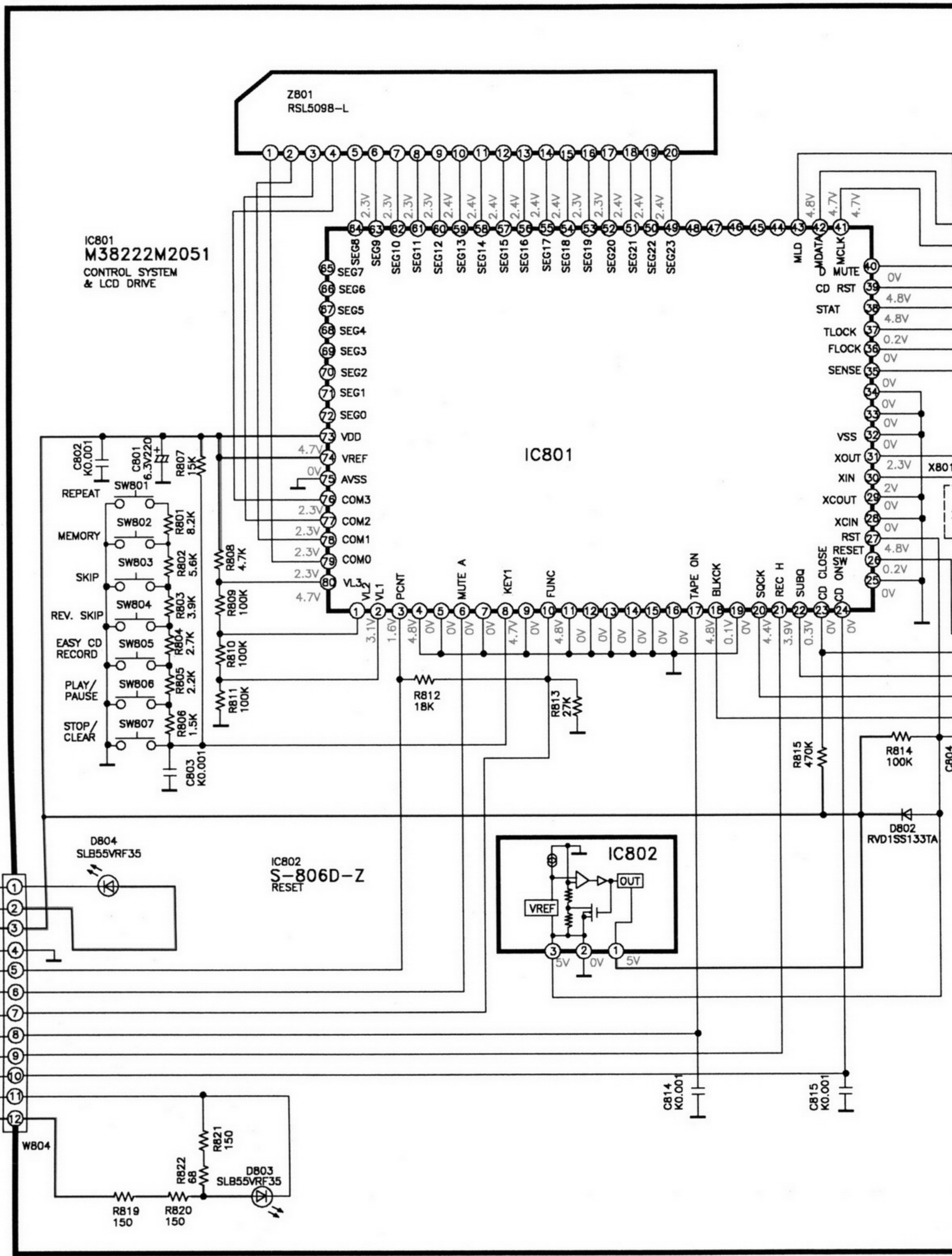
# SCHEMATIC DIAGRAM

1 2 3 4 5

A  
B  
C  
D  
E  
F

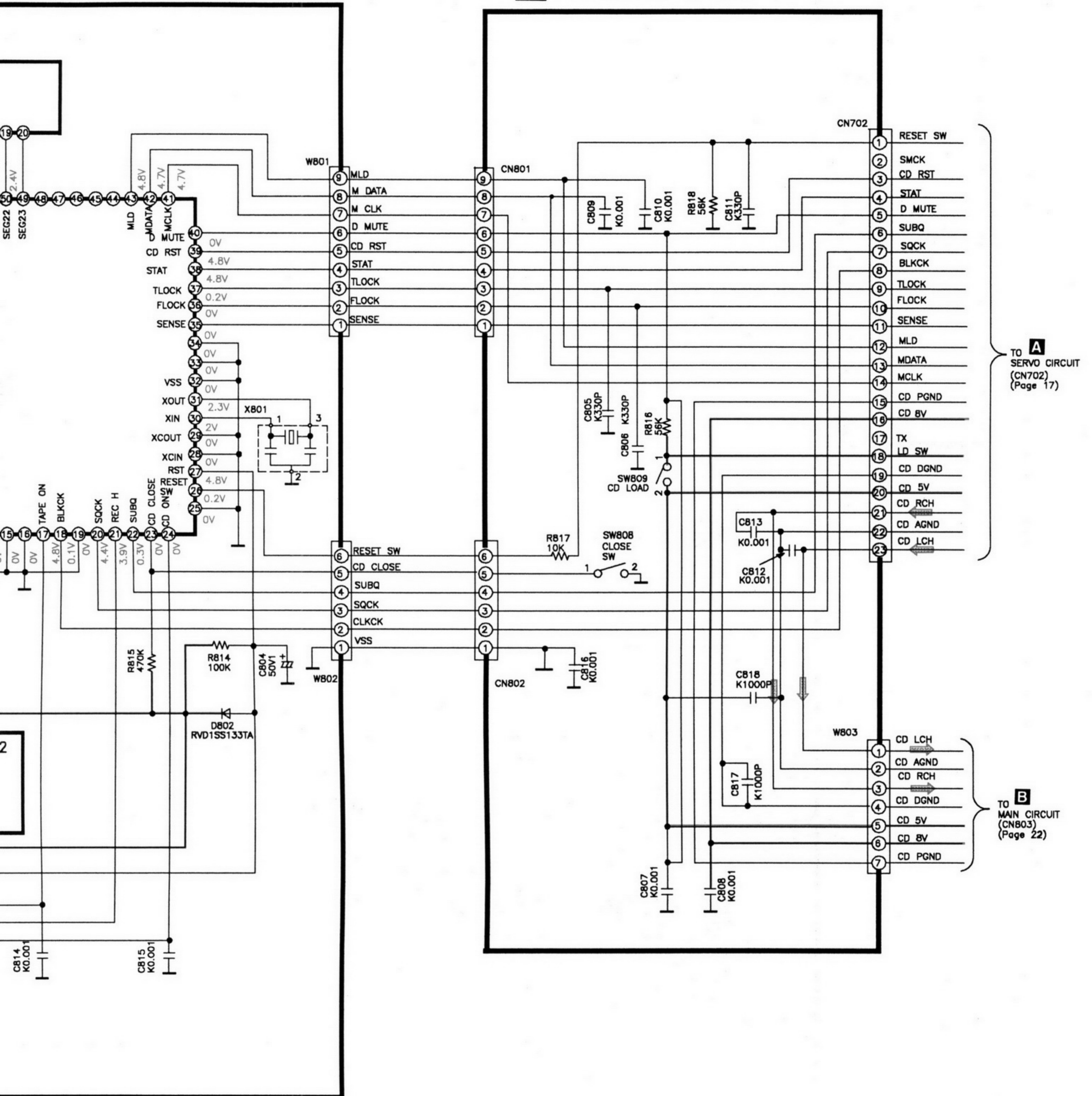
## D CONTROL CIRCUIT

**B**  
TO MAIN CIRCUIT  
(CN804)  
(Page 22)



4 5 6 7 8 9

### E CONNECTOR CIRCUIT



TO **A** SERVO CIRCUIT (CN702) (Page 17)

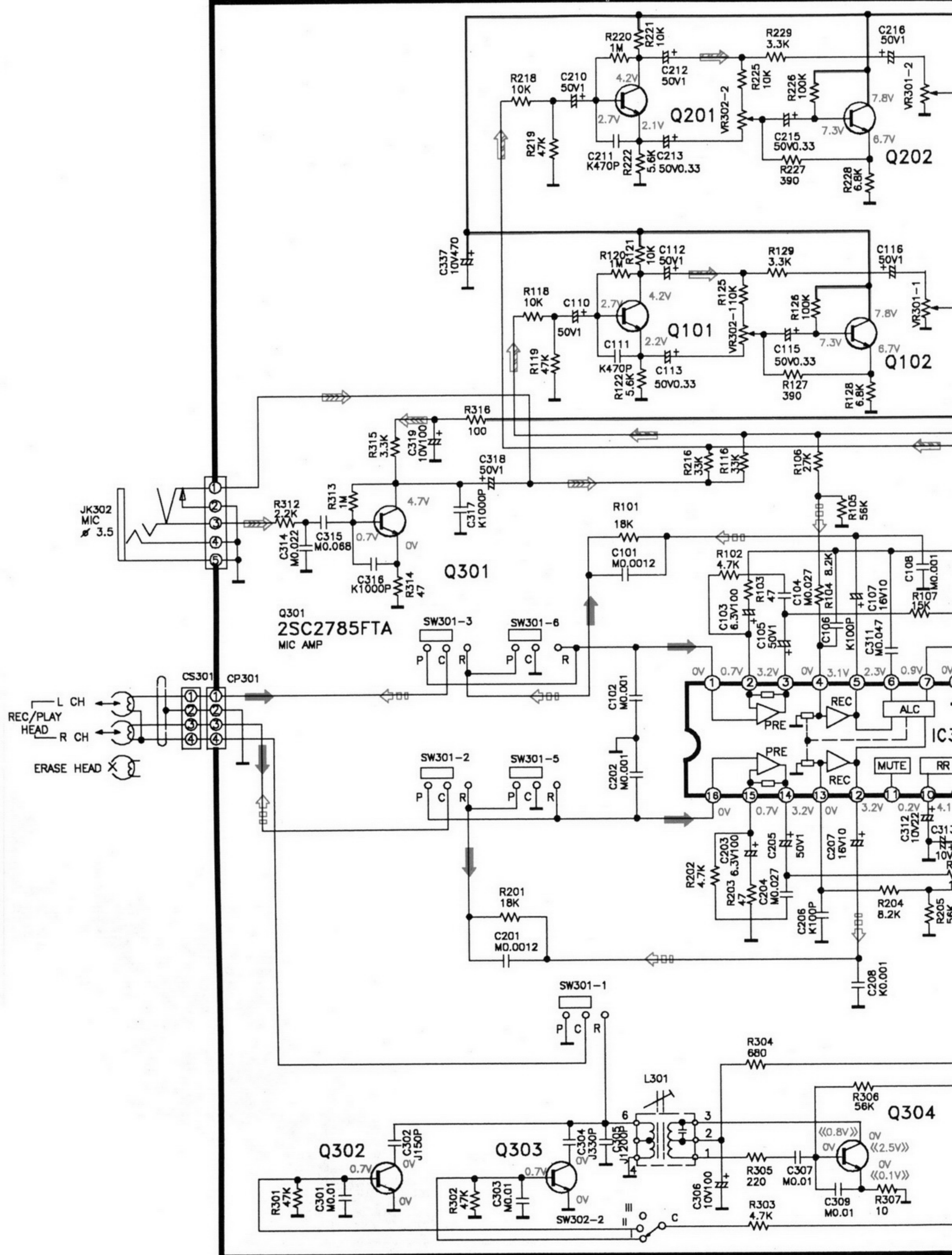
TO **B** MAIN CIRCUIT (CN803) (Page 22)

# SCHEMATIC DIAGRAM

1 2 3 4 5

A  
B  
C  
D  
E  
F

## B MAIN CIRCUIT



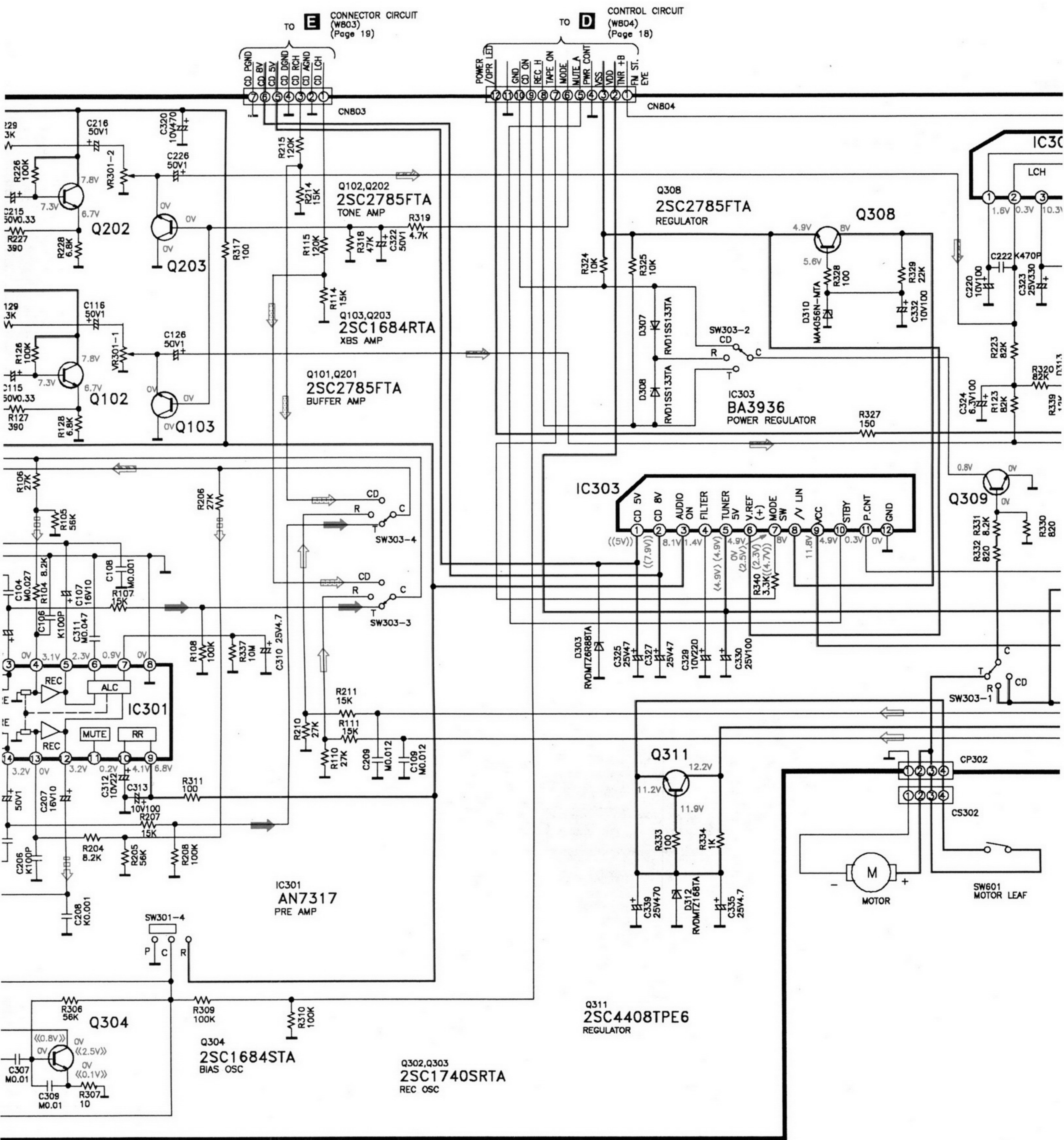
5

6

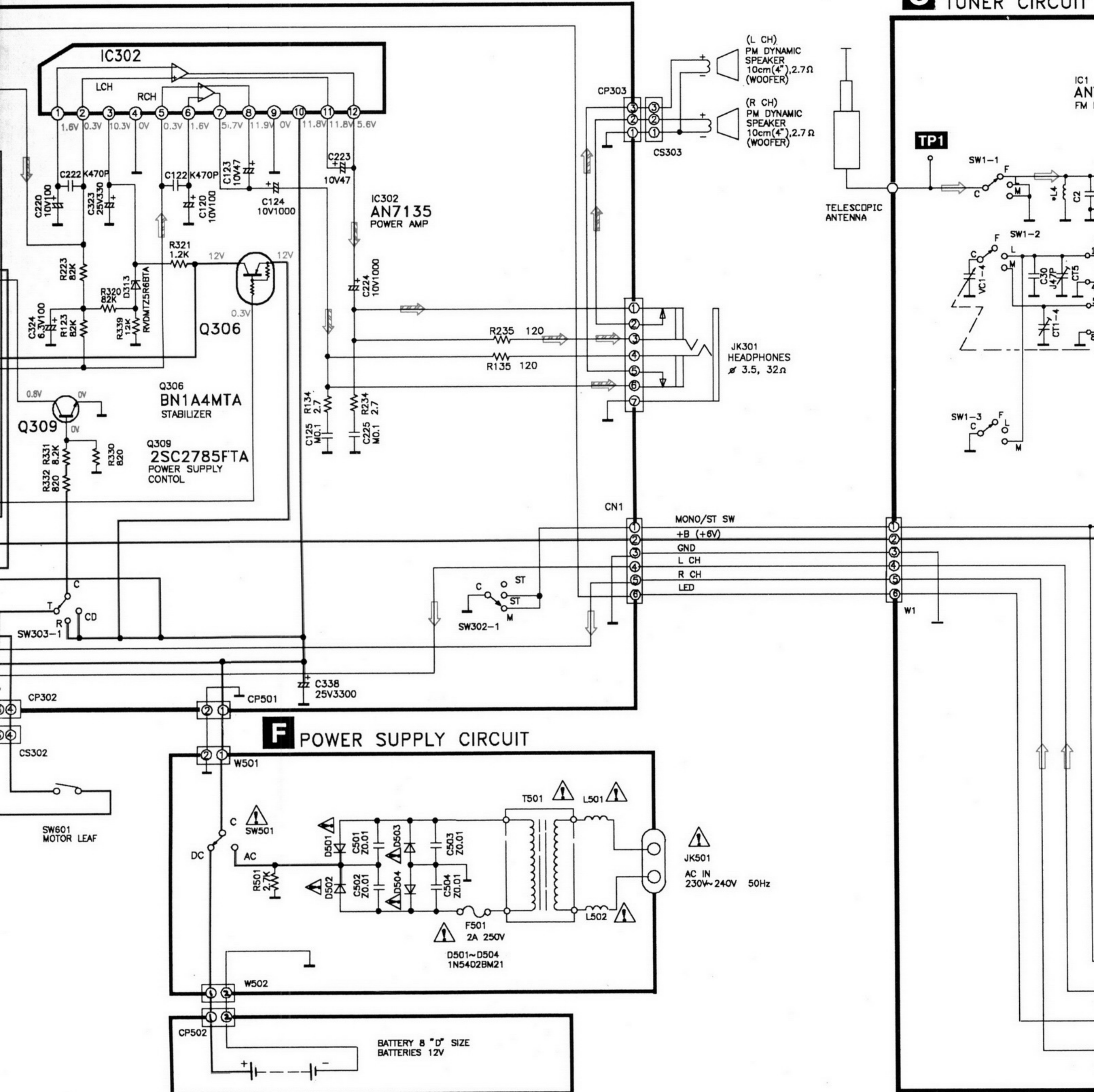
7

8

9



### C TUNER CIRCUIT





TUNER CIRCUIT

