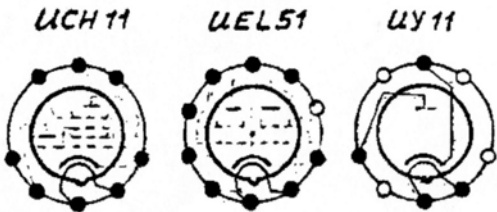
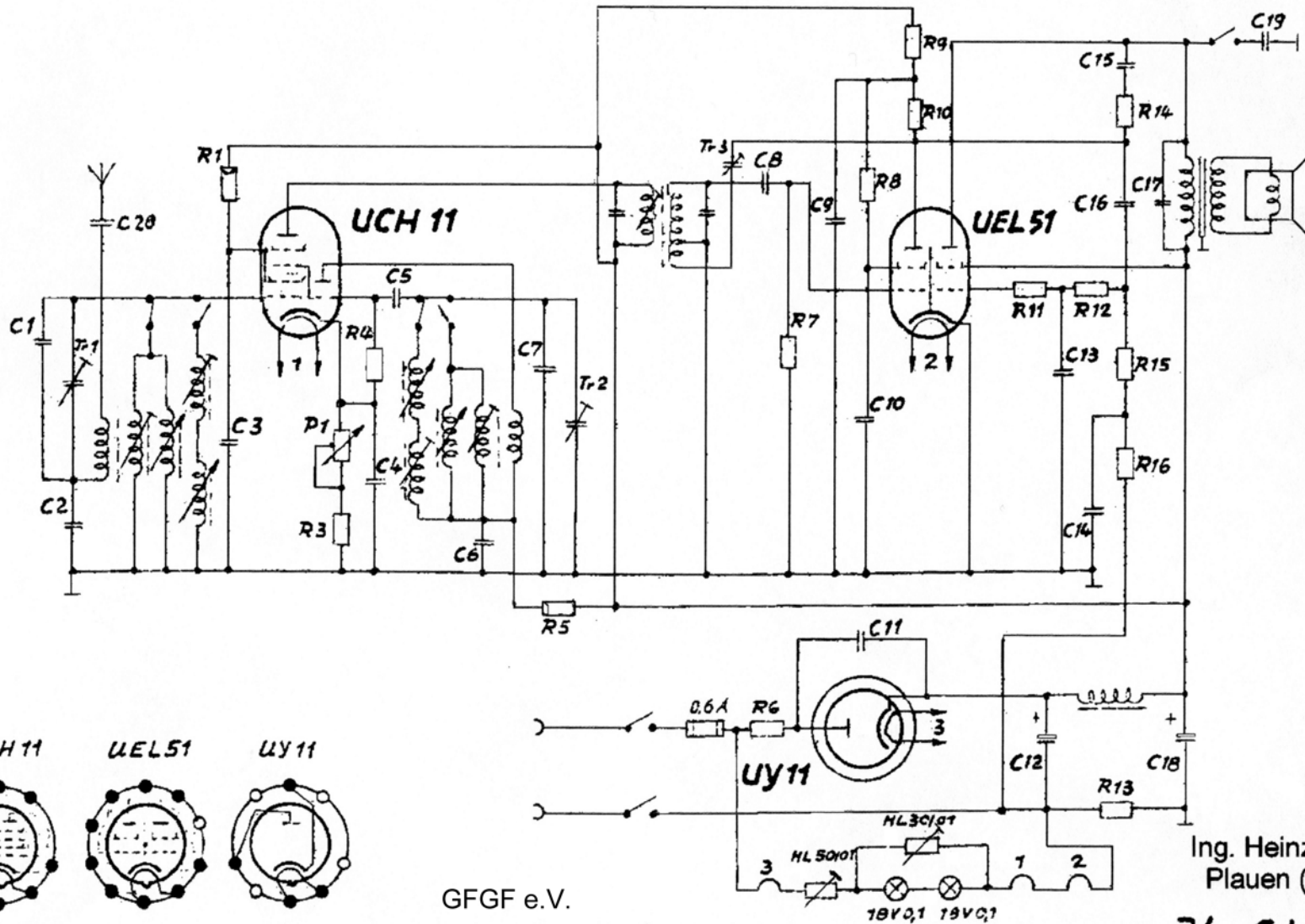


| | | | | | | | | | | | | | | | | | | | |
|---|---|---|---|---|---|---|---|---|---|----|----|----|----|----|----|----|----|----|----|
| C | 1 | 2 | 3 | 4 | 5 | 6 | 7 | 8 | 9 | 10 | 11 | 12 | 13 | 14 | 15 | 16 | 17 | 18 | 19 |
| R | | | 1 | 2 | 3 | 4 | 5 | 6 | 7 | 8 | 9 | 10 | 11 | 12 | 13 | 14 | 15 | 16 | |



GFGF e.V.

Ing. Heinz Blohm
Plauen (Vogtl.)

34 GW

Schichtwiderstände:

| | | |
|-----|-------|-----------|
| R1 | 0,5W | 40K |
| R2 | | |
| R3 | 0,25W | 160Ω |
| R4 | 0,1W | 50K |
| R5 | 0,5W | 30K |
| R6 | 1W | 150Ω/160Ω |
| R7 | 0,1W | 1M |
| R8 | 0,25W | 500K |
| R9 | 0,25W | 80K |
| R10 | 0,25W | 160K |
| R11 | 0,1W | 1K |
| R12 | 0,1W | 100K |
| R13 | 0,5W | 160Ω |
| R14 | 0,25W | 4M |
| R15 | 0,1W | 500K |
| R16 | 0,1W | 200K |
| P1 | 10KΩ | Lin. |

Kondensatoren

| | | |
|-------|-------------|---------------|
| C1 | Keram.-k. | 220pF x 250V |
| C2 | Styrofl.-k. | 2500pF x 250V |
| C3 | Roll.-k. | 0,05μF x 250V |
| C4 | Roll.-k. | 0,02μF x 125V |
| C5 | Keram.-k. | 50pF x 250V |
| C6 | Styrofl.-k. | 1000pF x 250V |
| C7 | Keram.-k. | 100pF x 250V |
| C8 | Keram.-k. | 100pF x 250V |
| C9 | Roll.-k. | 0,1μF x 250V |
| C10 | Roll.-k. | 0,1μF x 250V |
| C11 | Roll.-k. | 5000pF x 500V |
| C12 | Elyt.-k. | 16μF x 350/38 |
| C13 | Roll.-k. | 500pF x 125V |
| C14 | Epsilon-k. | 0,1μF x 125V |
| C15 | Keram.-k. | 300pF x 250V |
| C16 | Roll.-k. | 5000pF x 500V |
| C17 | Roll.-k. | 5000pF x 250V |
| C18 | Keram.-k. | 16μF x 350/38 |
| C19 | Roll.-k. | 0,05μF x 250V |
| C20 | Styrofl.-k. | 5000pF x 500V |
| Tr. 1 | Trimmer | 2502 AK |
| Tr. 2 | Trimmer | 2502 AK |
| Tr. 3 | Trimmer | 2502 AK |